

SMALL-SIZED ROCKER SWITCHES

Small-size and sleek styling make this switch a cost effective solution to most any switching need. International approvals further the broad appeal of this product.



Typical Applications:

- Appliance
- Audio-Visual
- Power Supplies

Dielectric Strength

UL/CSA:
 1000V - live to dead metal parts & opposite polarity
 VDE: 4000V - live to dead metal parts;
 1250V - opposite polarity & across open contacts

Electrical Life

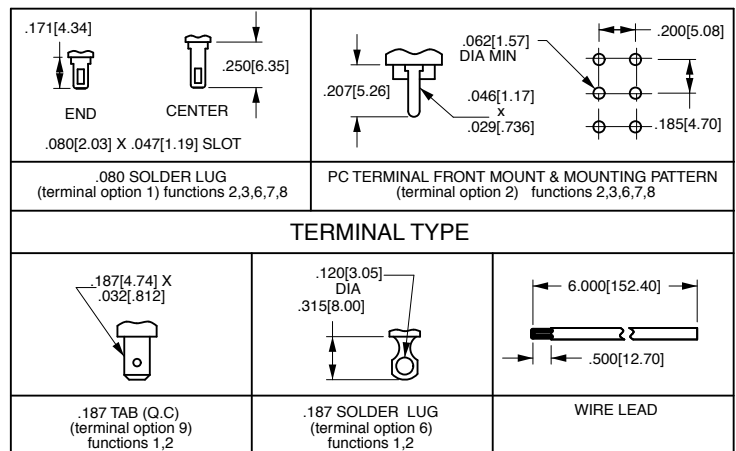
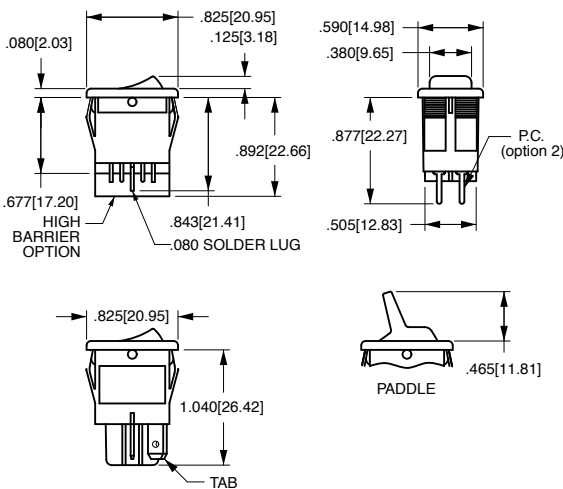
50,000 cycles- single pole
 50,000 cycles- double pole

Operating Temperature

32°F to 185°F (0°C to 85°C)

Mechanical Life

100,000 cycles



PANEL THICKNESS	X	Y	TEST CUT HOLE IN ACTUAL MATERIAL
.030[.762]-.060[1.52]	.508[12.90]	.756[19.20]	
.060[1.52]-.093[2.36]	.508[12.90]	.764[19.40]	
.093[2.36]-.156[3.96]	.508[12.90]	.780[19.81]	

*Manufacturer reserves the right to change product specification without prior notice.