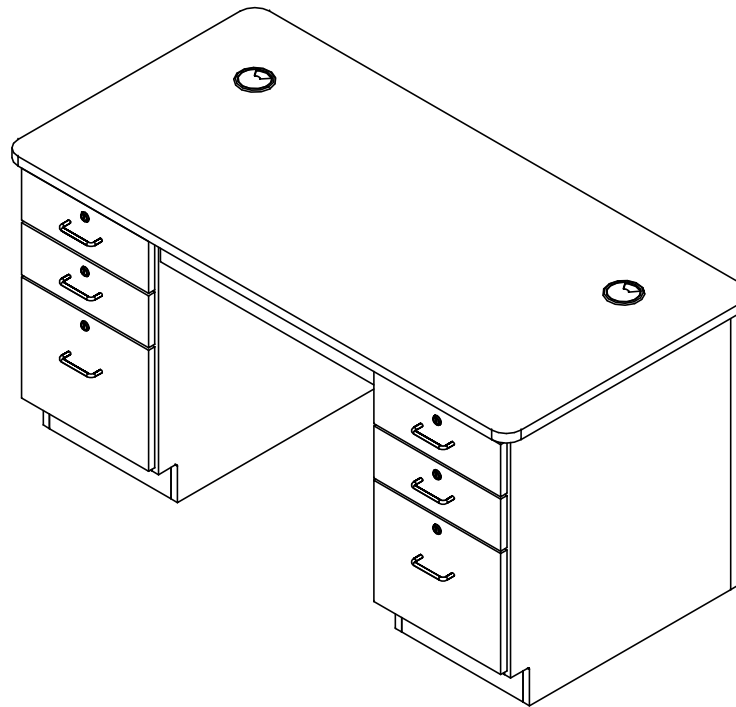


TEACHER'S WORK DESK

1131K

ASSEMBLY INSTRUCTIONS



NOTE:

1. MODEL VIEWS MAY NOT REPRESENT EXACT MODEL PURCHASED

DWN BY:	EMK	DWN DATE:	11/9/16
APR BY:		DATE APR:	
APR BY:		DATE APR:	

UNLESS OTHERWISE SPECIFIED
DIMENSION ARE IN INCHES

CABINET SQUARENESS $\pm .0625$
FRACTIONAL VALUES $\pm 1/32"$
- ALL VALUES \pm OVERALL -



300 South Krueger Street
Suring, WI 54174
diversifiedwoodcrafts.com

TITLE:
TEACHER'S WORK DESK
ASSEMBLY INSTRUCTIONS

A	CREATED DRAWING	11/9/16	EMK	-
REV.	DESCRIPTION	DATE	NAME	ECN NO.

REVISION LEVEL

THIS DRAWING IS THE SOLE PROPERTY OF
DIVERSIFIED WOOD CRAFTS. IT MAY NOT
BE ALTERED OR CHANGED WITHOUT
PERMISSION

DRAWING NUMBER:

1131K

SCALE:

NTS

SHEET:

1 OF 3

REVISION:

REV A

TOOLS REQUIRED

CONTACT CEMENT

SCREW DRIVER

ASSEMBLY COMPONENTS

ITEMS INCLUDED	PART #	PART DESCRIPTION	QTY
TOP WITH PENCIL DRAWER ATTACHED	VARIES	TOP, PLAM, 1.00X30X60, BLK (FACTORY ASSEMBLED)	1
SCREWS - TOP	100597	SCREW, #8X1.5 QUAD ROUND WASHER	12
CABINET	N/A	1131L - 16"W X 29"H X 26.25"D	1
CABINET	N/A	1131R - 16"W X 29"H X 26.25"D	1
BACK PANEL	N/A	58"W X 29"H X 0.75"D	1
SCREWS - BACK PANEL	100478	SCREW, #8X1 1/4 SQ. WASHER FLAT HEAD	12
GROMMETS	100767	GROMMET, 3.125, BLK	4
SILICONE	100711	SILICONE, SEALANT, CLEAR	1
RUBBER BASE MOLDING	100283	RUBBER BASE MOLDING (SOLD BY FOOT)	18
STAINLESS STEEL CORNERS	100057	CORNER-STAINLESS STEEL, BASE	8
SCREWS - BASE	100064	SCREW, #6X1/2 PTH SMS SS SCREW	32

NOTE:

1.

DWN BY:	EMK	DWN DATE:	11/9/16
APR BY:		DATE APR:	
APR BY:		DATE APR:	

UNLESS OTHERWISE SPECIFIED
DIMENSION ARE IN INCHES
CABINET SQUARENESS ± .0625
FRACTIONAL VALUES ± 1/32"
- ALL VALUES ± OVERALL -



300 South Krueger Street
Suring, WI 54174
diversifiedwoodcrafts.com

TITLE:
TEACHER'S WORK DESK
TOOLS AND ASSEMBLY COMPONENTS

A	CREATED DRAWING	11/9/16	EMK	-
REV.	DESCRIPTION	DATE	NAME	ECN NO.
REVISION LEVEL				

THIS DRAWING IS THE SOLE PROPERTY OF
DIVERSIFIED WOOD CRAFTS. IT MAY NOT
BE ALTERED OR CHANGED WITHOUT
PERMISSION

DRAWING NUMBER:

1131K

SCALE:

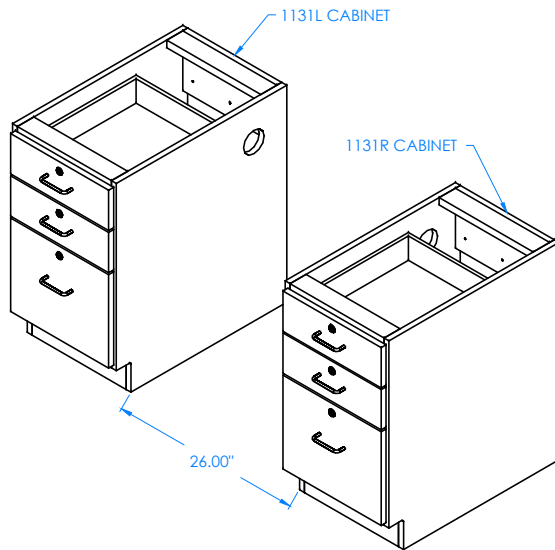
NTS

SHEET:

2 OF 3

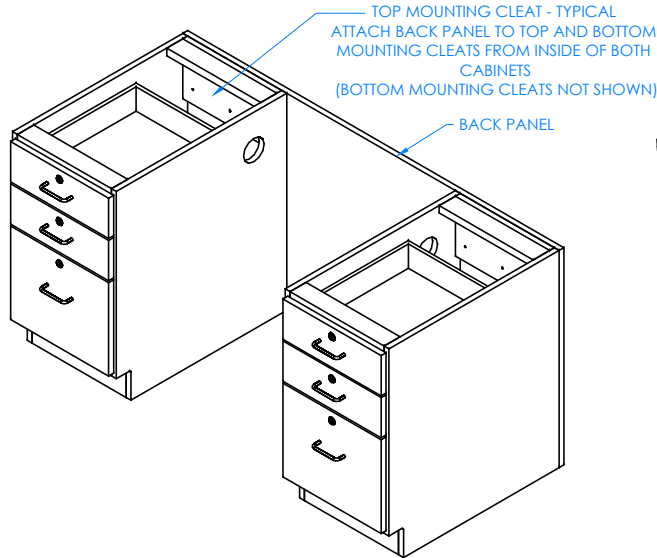
REVISION:

REV A



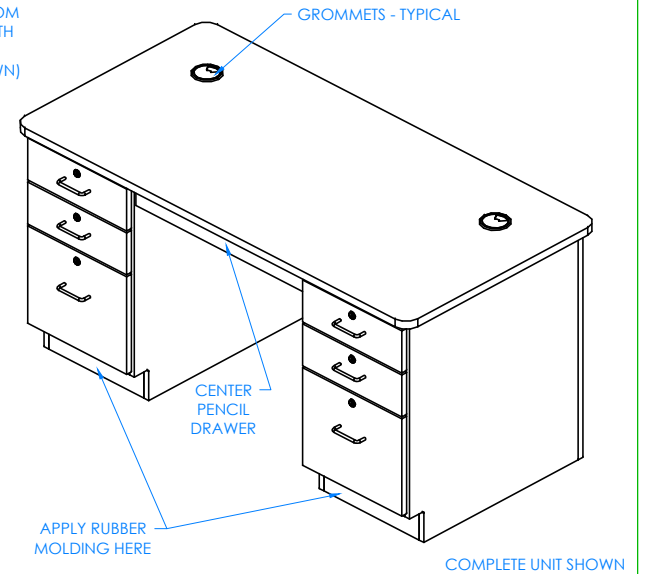
STEP 1:

POSITION THE TWO CABINETS IN DESIRED LOCATION. GROMMET HOLES NEED TO BE ON THE INSIDE OF UNIT. LEAVE ENOUGH ROOM IN BETWEEN CABINETS FOR CENTER PENCIL DRAWER.



STEP 2:

WITH HELP FROM ANOTHER PERSON, ATTACH BACK PANEL TO BACK OF CABINETS WITH THE SCREWS PROVIDED INTO MOUNTING CLEATS LOCATED INSIDE ON TOP AND BOTTOM OF BOTH CABINETS. MAKE SURE BACK PANEL IS FLUSH WITH OUTSIDE EDGES OF CABINETS.



STEP 3:

WITH HELP FROM ANOTHER PERSON, SET TOP ONTO CABINETS SO THE CENTER PENCIL DRAWER FITS IN BETWEEN CABINETS AND THE TOP HAS A PROPER OVERHANG (1" OVERHANG ON SIDES AND 1.50" ON FRONT AND BACK). ATTACH TOP TO CABINETS BY GOING INSIDE OF CABINET AND SCREWING UP THROUGH THE TOP RAILS WITH THE SCREWS PROVIDED. ATTACH RUBBER BASE MOLDING TO BASE OF INSTRUCTORS DESK USING CONTACT CEMENT. AFTER MOLDING IS IN PLACE, SCREW STAINLESS STEEL CORNER BRACKETS ON EACH CORNER OVER BASE MOLDING WITH SCREWS PROVIDED. ATTACH GROMMETS TO TOP AND SIDES OF CABINETS WITH SILICONE ADHESIVE.

NOTE:

1.

DWN BY:	EMK	DWN DATE:	11/9/16
APR BY:		DATE APR:	
APR BY:		DATE APR:	

UNLESS OTHERWISE SPECIFIED
DIMENSION ARE IN INCHES

CABINET SQUARENESS $\pm .0625$
FRACTIONAL VALUES $\pm 1/32"$
- ALL VALUES \pm OVERALL -

A	CREATED DRAWING	11/9/16	EMK	-
REV.	DESCRIPTION	DATE	NAME	ECN NO.
	REVISION LEVEL			

THIS DRAWING IS THE SOLE PROPERTY OF
DIVERSIFIED WOOD CRAFTS. IT MAY NOT
BE ALTERED OR CHANGED WITHOUT
PERMISSION



300 South Krueger Street
Suring, WI 54174
diversifiedwoodcrafts.com

TITLE:
TEACHER'S WORK DESK
ASSEMBLY INSTRUCTIONS

DRAWING NUMBER:	1131K	SCALE:	NTS	SHEET:	3 OF 3	REVISION:	REV A
-----------------	-------	--------	-----	--------	--------	-----------	-------