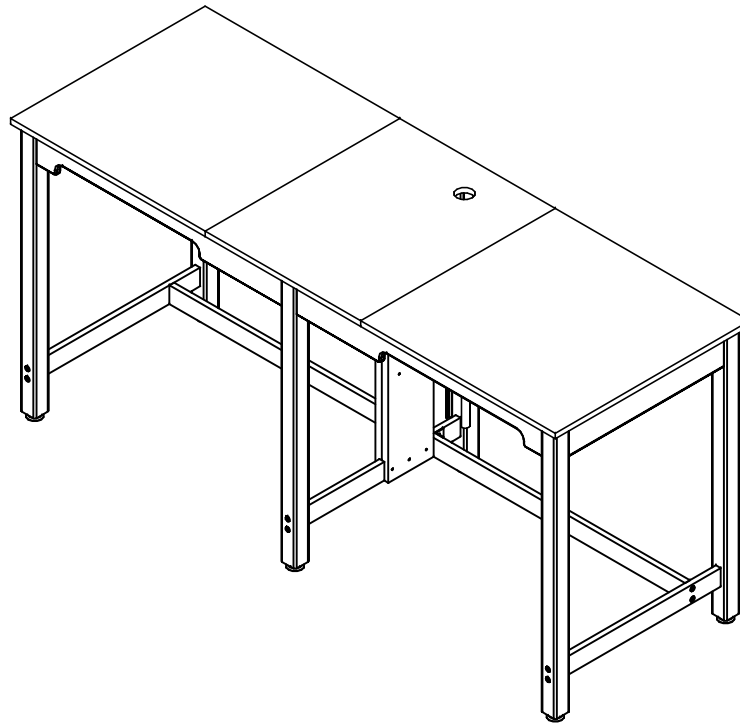


TWO-STATION CPU TABLE

CDTC-73

ASSEMBLY INSTRUCTIONS



NOTE:

1. MODEL VIEWS MAY NOT REPRESENT EXACT MODEL PURCHASED

DWN BY:	EMK	DWN DATE:	8/15/14
APR BY:		DATE APR:	
APR BY:		DATE APR:	

UNLESS OTHERWISE SPECIFIED
DIMENSION ARE IN INCHES
CABINET SQUARENESS ± .0625
FRACTIONAL VALUES ± 1/32"
- ALL VALUES ± OVERALL -



300 South Krueger Street
Suring, WI 54174
diversifiedwoodcrafts.com

TITLE:
TWO-STATION CPU TABLE
ASSEMBLY INSTRUCTIONS

REV.	DESCRIPTION	DATE	NAME	ECN NO.
D	UPDATED STEPS 3, 5, AND 6	10/9/15	EMK	-
C	UPDATED ASSEMBLY COMPONENTS	10/6/15	EMK	-
B	ADDED WIRE MANAGEMENT	10/15/14	EMK	818
A	CREATED ASSEMBLY INSTRUCTIONS	8/15/14	EMK	-

REVISION LEVEL

THIS DRAWING IS THE SOLE PROPERTY OF
DIVERSIFIED WOOD CRAFTS. IT MAY NOT
BE ALTERED OR CHANGED WITHOUT
PERMISSION

DRAWING NUMBER:

CDTC-73

SCALE:

NTS

SHEET:

1 OF 6

REVISION:

REV D

TOOLS REQUIRED

1/2" WRENCH
1/2" SOCKET AND TORQUE WRENCH - OPTIONAL
4MM ALLEN WRENCH
PHILLIPS SCREW DRIVER
1/8" DRILL BIT

ASSEMBLY COMPONENTS

ITEMS INCLUDED	PART #	PART DESCRIPTION	QTY
TOPS AND APRON ASSEMBLY	N/A	TOP ASSEMBLY (FACTORY ASSEMBLY)	1
LEGS	501102	LEG,MPL 2.25X2.25X38.25	6
LEG HARDWARE	520001	LEG HARDWARE KIT, 1 LEG	6
STRETCHER	N/A	TABLE STRETCHER - 39.375" LONG	2
BRACKET - STRETCHER	100525	BRACKET,RAIL 1.5X1.5X.125,1.885L	2
SCREWS - STRETCHER BRACKET	100649	SCREW,#8X 3/4 PHIL TRUSS HEAD SMS	8
CONFRIMATS - STRETCHERS	228564	SCREW,7MMX50MM,CONN,ALLENHEAD, BLACK	4
LEG BRACE	N/A	LEG BRACE - 24.00" LONG	3
CONFIRMATS - LEGS	227578	SCREW,7MMX90MM,CONN,ALLENHEAD, BLACK	12
CPU SUPPORT	N/A	SUPPORT,CPU,EB4,1.00X7.00X32.50	2
SCREWS - CPU SUPPORT	100478	SCREW,#8X1 1/4 SQ. WASHER FLAT HEAD	12
CPU BRACKET	232171	BRACKET,MOUNTING, CPU UNIT	2
CENTER LEG BRACKET	100958	BRACKET,ANGLE,APRON TO LEG	4
BOLT - CENTER LEG BRACKET	100638	BOLT,5/16X3 HEX HEAD	4
WASHER - CENTER LEG BRACKET	218589	WASHER,1/4" FLAT, USS ZINC PLATED	4
WASHER - CENTER LEG BRACKET	100039	WASHER,SPLIT LOCK 5/16	4
HEX NUT - CENTER LEG BRACKET	100044	NUT,HEX 5/16-18 STEEL ZINC	4

NOTE:

1.

DWN BY:	EMK	DWN DATE:	8/15/14
APR BY:		DATE APR:	
APR BY:		DATE APR:	



300 South Krueger Street
Suring, WI 54174
diversifiedwoodcrafts.com

REV.	DESCRIPTION	DATE	NAME	ECH NO.
D	UPDATED STEPS 3, 5, AND 6	10/9/15	EMK	-
C	UPDATED ASSEMBLY COMPONENTS	10/6/15	EMK	-
B	ADDED WIRE MANAGEMENT	10/15/14	EMK	818
A	CREATED ASSEMBLY INSTRUCTIONS	8/15/14	EMK	-

UNLESS OTHERWISE SPECIFIED
DIMENSION ARE IN INCHES
CABINET SQUARENESS ± .0625
FRACTIONAL VALUES ± 1/32"
- ALL VALUES ± OVERALL -

THIS DRAWING IS THE SOLE PROPERTY OF
DIVERSIFIED WOOD CRAFTS. IT MAY NOT
BE ALTERED OR CHANGED WITHOUT
PERMISSION

TITLE:
**TWO-STATION CPU TABLE
TOOLS AND ASSEMBLY COMPONENTS**

DRAWING NUMBER:	SCALE:	SHEET:	REVISION:
CDTC-73	NTS	2 OF 6	REV D

ASSEMBLY COMPONENTS

ITEMS INCLUDED	PART #	PART DESCRIPTION	QTY
WIRE MANAGEMENT	250612	1.05X0.44X26.00,BLK WIRE MANAGER	2
MOUNTING BASE	243300	HAFELE ELLIPTA MOUNTING POST BASE	1
MOUNTING POST	243299	HAFELE ELLIPTA MOUNTING POST	1
MOUNTING CLAMP	246855	HAFELE ELLIPTA SLIDING CLAMP, ALUMI	1
MOUNTING ARM	15-0185	HAFELE FLAT SCREEN ARM	2
KEYBOARD TRAY KIT	214416	TRAY,KEYBOARD,SLIDE OUT,#KVKD100	2
UPPER SUPPORT	N/A	UPPER SUPPORT- 4.00" W X 26.375" L	1
SCREWS - UPPER SUPPORT	100597	SCREW,#8X1.5 QUAD ROUND WASHER	5

NOTE:

1.

REV.	DESCRIPTION	DATE	NAME	ECN NO.
D	UPDATED STEPS 3, 5, AND 6	10/9/15	EMK	-
C	UPDATED ASSEMBLY COMPONENTS	10/6/15	EMK	-
B	ADDED WIRE MANAGEMENT	10/15/14	EMK	818
A	CREATED ASSEMBLY INSTRUCTIONS	8/15/14	EMK	-

REVISION LEVEL

DWN BY:	EMK	DWN DATE:	8/15/14
APR BY:		DATE APR:	
APR BY:		DATE APR:	

UNLESS OTHERWISE SPECIFIED
DIMENSION ARE IN INCHES
CABINET SQUARENESS ± .0625
FRACTIONAL VALUES ± 1/32"
- ALL VALUES ± OVERALL -

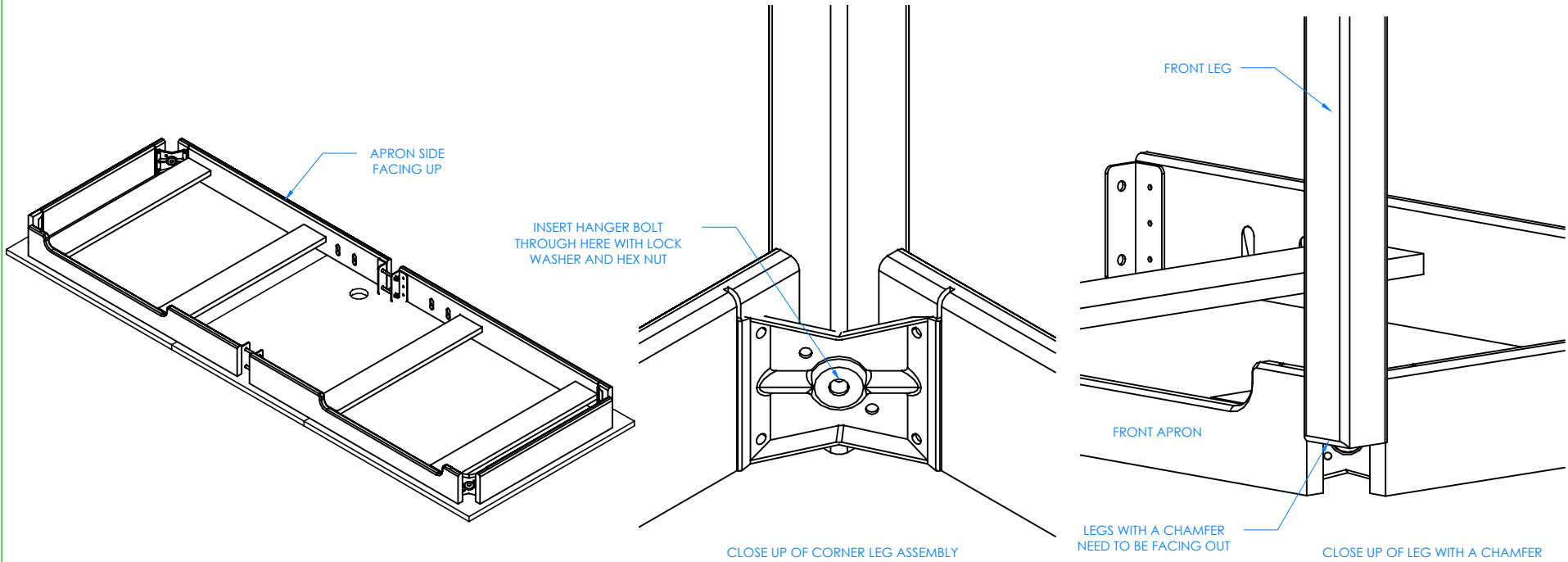
THIS DRAWING IS THE SOLE PROPERTY OF
DIVERSIFIED WOOD CRAFTS. IT MAY NOT
BE ALTERED OR CHANGED WITHOUT
PERMISSION



300 South Krueger Street
Suring, WI 54174
diversifiedwoodcrafts.com

TITLE:
**TWO-STATION CPU TABLE
TOOLS AND ASSEMBLY COMPONENTS**

DRAWING NUMBER: CDTC-73	SCALE: NTS	SHEET: 3 OF 6	REVISION: REV D
-----------------------------------	---------------	------------------	--------------------



STEP 1:

LAY TOP ASSEMBLY ON FLOOR, WITH APRON SIDE FACING UP. BE SURE TOP ASSEMBLY IS ON A CLEAN SURFACE TO PREVENT DAMAGE.

STEP 2:

INSERT THE HANGER BOLT ON ONE OF THE CORNER LEGS THROUGH THE CORNER BRACKET AND INSERT THE LOCK WASHER AND HEX NUT. USING A 1/2" WRENCH OR 1/2" SOCKET AND TORQUE WRENCH, SCREW ON THE NUT BUT DO NOT TIGHTEN ALL THE WAY. REPEAT FOR THE OTHER 3 CORNER LEGS. NOTE: THE TWO LEGS WITH A CHAMFER MUST GO ON THE FRONT OF THE TABLE WITH CHAMFERED EDGES FACING OUT.

NOTE:

- 1.

REV.	DESCRIPTION	DATE	NAME	ECH. NO.
D	UPDATED STEPS 3, 5, AND 6	10/9/15	EMK	-
C	UPDATED ASSEMBLY COMPONENTS	10/6/15	EMK	-
B	ADDED WIRE MANAGEMENT	10/15/14	EMK	818
A	CREATED ASSEMBLY INSTRUCTIONS	8/15/14	EMK	-

REVISION LEVEL

DWN BY:	EMK	DWN DATE:	8/15/14
APR BY:		DATE APR:	
APR BY:		DATE APR:	

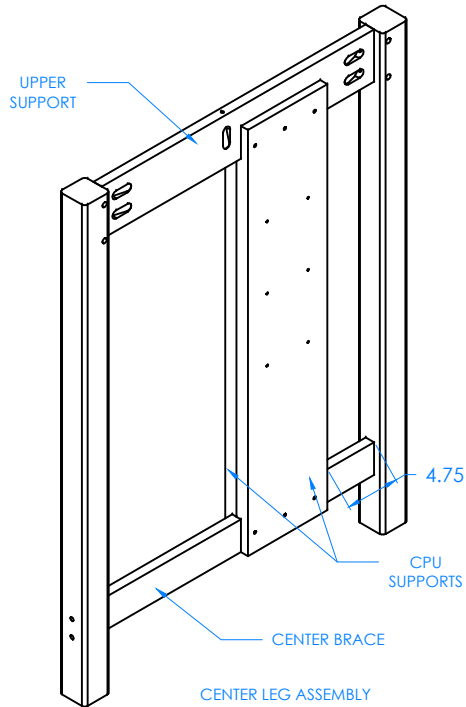
UNLESS OTHERWISE SPECIFIED DIMENSION ARE IN INCHES
 CABINET SQUARENESS ± .0625
 FRACTIONAL VALUES ± 1/32"
 - ALL VALUES ± OVERALL -

THIS DRAWING IS THE SOLE PROPERTY OF DIVERSIFIED WOOD CRAFTS. IT MAY NOT BE ALTERED OR CHANGED WITHOUT PERMISSION

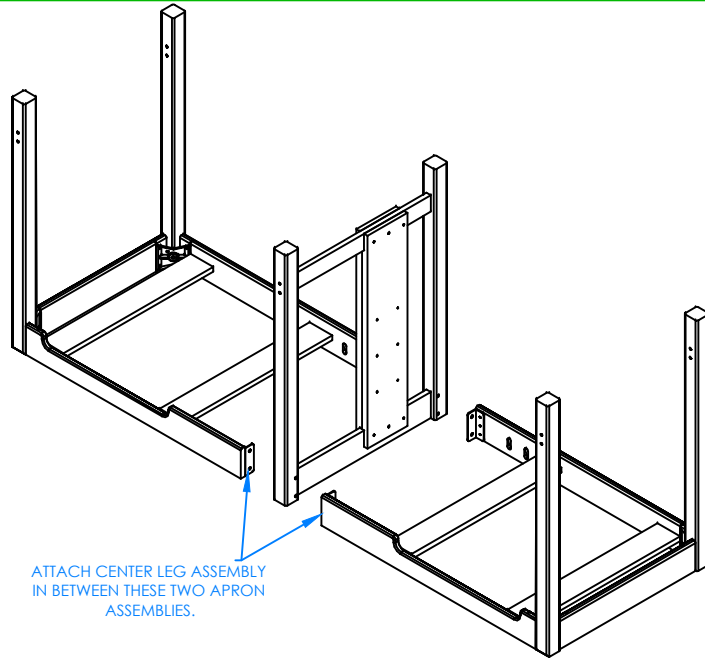
300 South Krueger Street
 Suring, WI 54174
 diversifiedwoodcrafts.com

TITLE:
TWO-STATION CPU TABLE ASSEMBLY INSTRUCTIONS

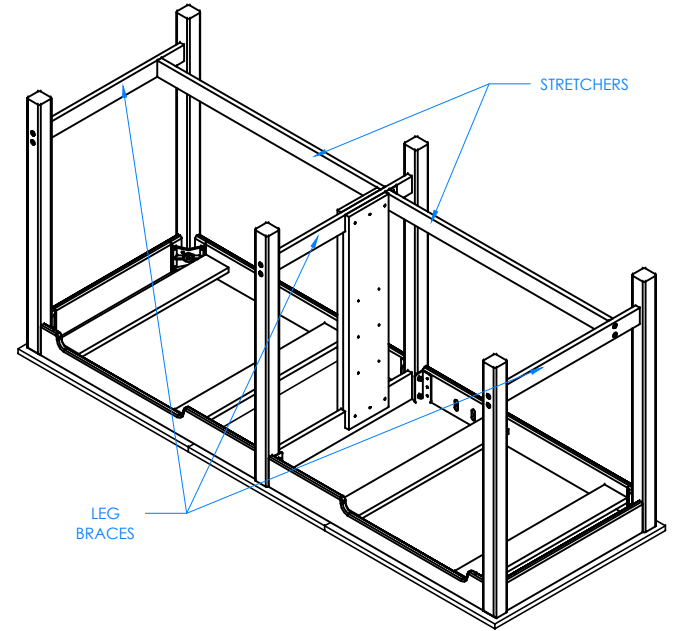
DRAWING NUMBER: CDTC-73	SCALE: NTS	SHEET: 4 OF 6	REVISION: REV D
-----------------------------------	---------------	------------------	--------------------



STEP 3:
 INSTALL THE CENTER BRACE BETWEEN THE TWO CENTER LEGS. TIGHTEN WITH THE CONFIRMATS PROVIDED. INSTALL THE UPPER SUPPORT (FLUSH TO THE TOP) BETWEEN THE TWO LEGS. TIGHTEN WITH THE SCREWS PROVIDED. ATTACH THE CPU SUPPORTS TO THE UPPER SUPPORT AND CENTER BRACE 4.75" FROM THE BACK LEG. THE BRACES SHOULD FIT INTO THE NOTCHES ON THE CPU SUPPORTS. ATTACH WITH SCREWS PROVIDED.



STEP 4:
 USING THE SUPPLIED HEX HEAD BOLTS, INSERT BOLTS THROUGH THE FIRST BRACKET, THE LEG, AND THROUGH THE SECOND BRACKET. ADD LOCK WASHER AND HEX NUT. REPEAT FOR THE OTHER BRACKET.



STEP 5:
 INSERT EACH LEG BRACE IN THE CORRECT LOCATIONS BETWEEN THE LEGS. MAKING SURE THE BRACES WITH THE STRETCHER HOLES GO ON THE OUTSIDE AND THE ONE WITHOUT GOES IN THE MIDDLE. ATTACH THE BRACES WITH THE 90MM CONFIRMATS PROVIDED AND TIGHTEN WITH A 4MM ALLEN WRENCH. INSERT BOTH STRETCHERS ONCE EACH LEG BRACE IS TIGHT AND SECURE. ATTACH STRETCHERS WITH THE 50MM CONFIRMATS AND THE BRACKETS PROVIDED. OFFSET BRACKETS ON EACH SIDE SO THE SCREWS DON'T HIT EACH OTHER. PREDRILL HOLES IN STRETCHER WITH A 1/8" BIT AND ATTACH WITH #8 X 3/4" SCREWS. GO BACK TO STEP 2 AND TIGHTEN THE HANGER BOLT FOR EACH CORNER LEG USING A 1/2" WRENCH OR 1/2" SOCKET AND TORQUE WRENCH, TO A MINIMUM OF 12 FT LBS BUT NOT TO EXCEED 17FT LBS.

NOTE:

1.

DWN BY:	EMK	DWN DATE:	8/15/14
APR BY:		DATE APR:	
APR BY:		DATE APR:	

UNLESS OTHERWISE SPECIFIED DIMENSION ARE IN INCHES
 CABINET SQUARENESS ± .0625
 FRACTIONAL VALUES ± 1/32"
 - ALL VALUES ± OVERALL -

THIS DRAWING IS THE SOLE PROPERTY OF DIVERSIFIED WOOD CRAFTS. IT MAY NOT BE ALTERED OR CHANGED WITHOUT PERMISSION



300 South Krueger Street
 Suring, WI 54174
 diversifiedwoodcrafts.com

TITLE:
**TWO-STATION CPU TABLE
 ASSEMBLY INSTRUCTIONS**

REV.	DESCRIPTION	DATE	NAME	ECHN NO.
D	UPDATED STEPS 3, 5, AND 6	10/9/15	EMK	-
C	UPDATED ASSEMBLY COMPONENTS	10/6/15	EMK	-
B	ADDED WIRE MANAGEMENT	10/15/14	EMK	818
A	CREATED ASSEMBLY INSTRUCTIONS	8/15/14	EMK	-

REVISION LEVEL

DRAWING NUMBER:

CDTC-73

SCALE:

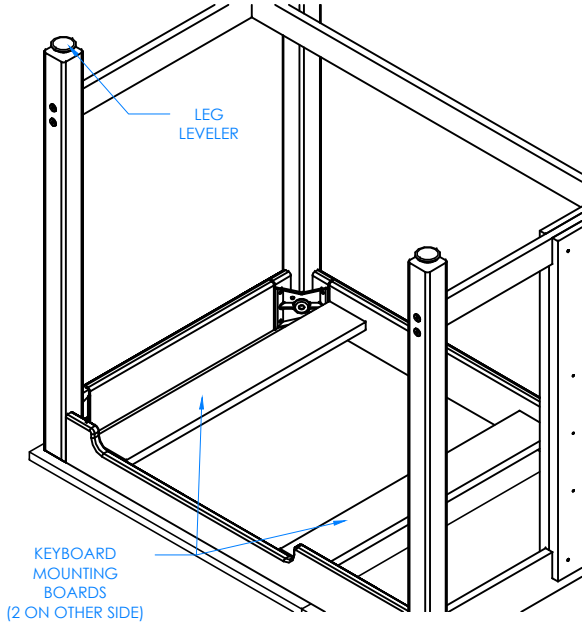
NTS

SHEET:

5 OF 6

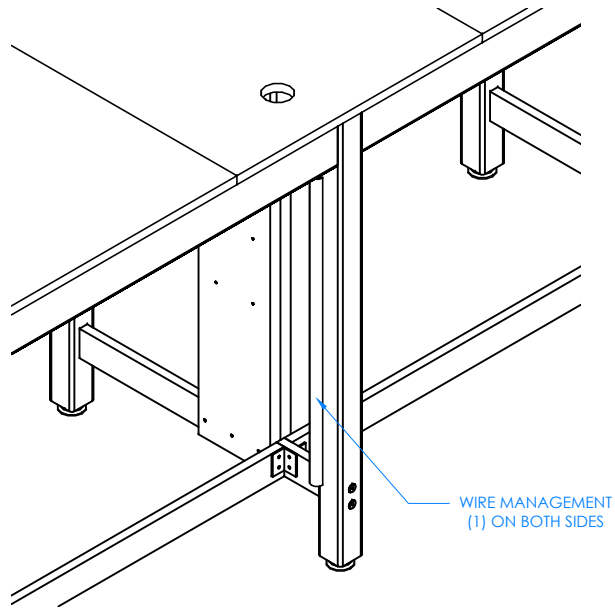
REVISION:

REV D



STEP 6:

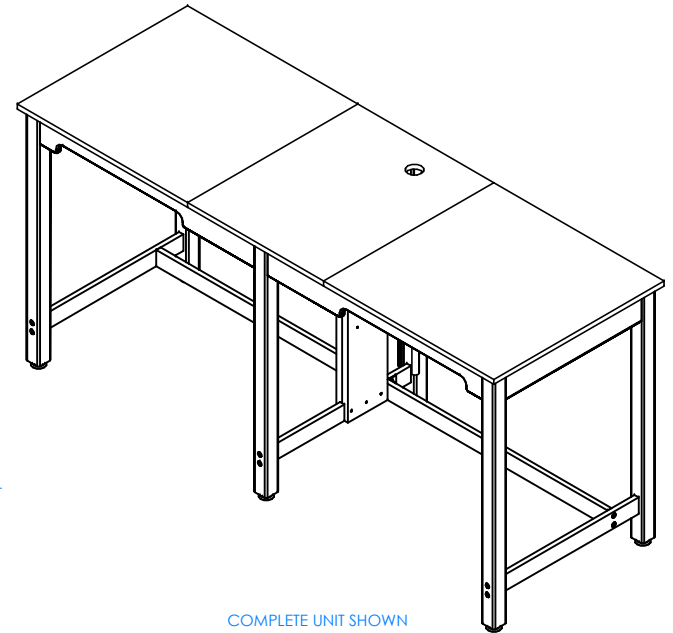
WITH TABLE STILL ON ITS TOP, ATTACH KEYBOARD TRAY (NOT SHOWN) TO THE TWO KEYBOARD MOUNTING BOARDS ON EACH SIDE WITH THE HARDWARE PROVIDED. SCREW LEG LEVELERS INTO THE T-NUT IN THE BOTTOM OF THE LEG.



BACKSIDE OF TABLE SHOWN

STEP 7:

TURN TABLE OVER SO TOP IS UP. ATTACH WIRE MANAGEMENT TO BOTH SIDES OF CENTER LEG IN PROPER LOCATION.



COMPLETE UNIT SHOWN

STEP 8:

SET YOUR TABLE IN PLACE AND ADJUST THE LEG LEVELERS TO LEVEL THE TABLE. INSTALL THE CPU HOLDERS TO THE SUPPORTS USING THE APPROPRIATE HARDWARE FOR YOUR APPLICATION.

NOTE:

1. CPU HOLDER, KEYBOARD TRAY & MONITOR SUPPORT SUPPLIED BUT NOT SHOWN.

REV.	DESCRIPTION	DATE	NAME	ECH NO.
D	UPDATED STEPS 3, 5, AND 6	10/9/15	EMK	-
C	UPDATED ASSEMBLY COMPONENTS	10/6/15	EMK	-
B	ADDED WIRE MANAGEMENT	10/15/14	EMK	818
A	CREATED ASSEMBLY INSTRUCTIONS	8/15/14	EMK	-
REVISION LEVEL				

DWN BY:	EMK	DWN DATE:	8/15/14
APR BY:		DATE APR:	
APR BY:		DATE APR:	

UNLESS OTHERWISE SPECIFIED
DIMENSION ARE IN INCHES
CABINET SQUARENESS ± .0625
FRACTIONAL VALUES ± 1/32"
- ALL VALUES ± OVERALL -

THIS DRAWING IS THE SOLE PROPERTY OF
DIVERSIFIED WOOD CRAFTS. IT MAY NOT
BE ALTERED OR CHANGED WITHOUT
PERMISSION



300 South Krueger Street
Suring, WI 54174
diversifiedwoodcrafts.com

TITLE:
**TWO-STATION CPU TABLE
ASSEMBLY INSTRUCTIONS**

DRAWING NUMBER:	SCALE:	SHEET:	REVISION:
CDTC-73	NTS	6 OF 6	REV D