

KV5700 Keyboard Tray



Carton should contain the keyboard tray subassembly and a hardware kit consisting of:

4- #8 x $\frac{1}{4}$ " self tapping screws

8- #8 x $\frac{5}{8}$ " mounting screws

4- Adjustable mounting brackets with 7 position slots

Limited Lifetime Warranty

Knape & Vogt Manufacturing Company guarantees its drawer slides and builder's hardware products against failure or defects for so long as the purchaser or end user own them. This warranty is void if any damage to the product is due to misuse, abuse, neglect, accident, improper installation or any used contrary to the instructions accompanying the product. This warranty covers the cost of the defective part and not the cost of removal, installation or other incidental charges. The foregoing are the purchaser's exclusive remedies. Knape & Vogt Manufacturing Company, Attention: Customer Services Department.

The warranty set forth above is in lieu of any other warranties, express or implied, including warranties or merchantability and fitness for use.



Assembly, Mounting and Installation Instructions

Step 1. Keyboard Preparation (Optional)

It is recommended, but is not required, to disassemble the slides from the tray for easier installation. This is easily done by first depressing the plastic lever as shown in Figure 1 and then pulling the slide members apart. Repeat for other slide.

Step 2. Determine Mounting Direction

Measure mounting location to determine if the mounting brackets should face inwards or outwards. If width is less than 24" the brackets must face inward. If the mounting location is 24" or greater, the brackets may face either direction.

Step 3. Determine Drop Height

A. Measure the maximum height of the keyboard that you will be using. Compare keyboard height with the adjustment heights in Chart A to determine at which height position the mounting brackets need to be installed.

Chart A	Max. Keyboard Height (inches)
Position 1	3.60
Position 2	3.38
Position 3	3.15
Position 4	2.93
Position 5	2.70
Position 6	2.48
Position 7	2.25

B. Alternatively, you may use Chart B and Figure 2 to determine what height is desired to allow a knee clearance or chair clearance, underneath the keyboard after installation.

Chart B	Height Loss Under Surface (inches)
Position 1	3.78
Position 2	3.56
Position 3	3.33
Position 4	3.11
Position 5	2.88
Position 6	2.66
Position 7	2.43

Step 4. Assemble Brackets

Attach mounting brackets to the slide cabinet member, in the direction (step 1) and position (step 2 a or b), using the #8 x 1/4" self tapping screws provided in the hardware kit.

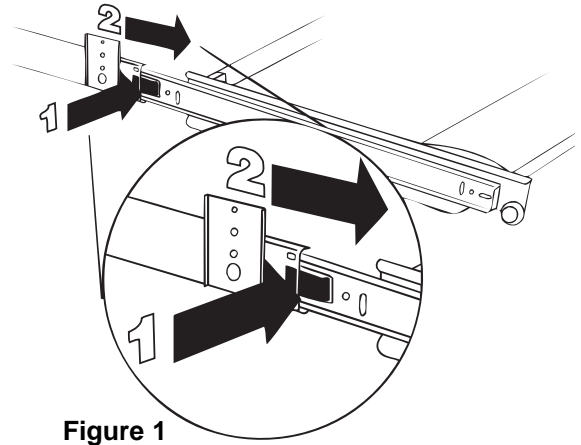


Figure 1

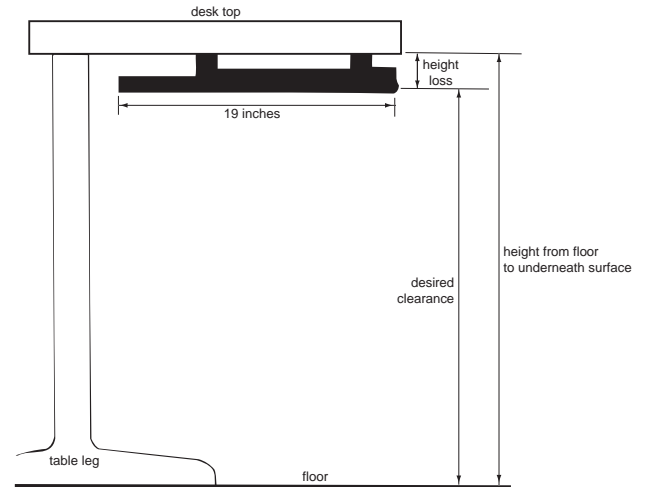


Figure 2

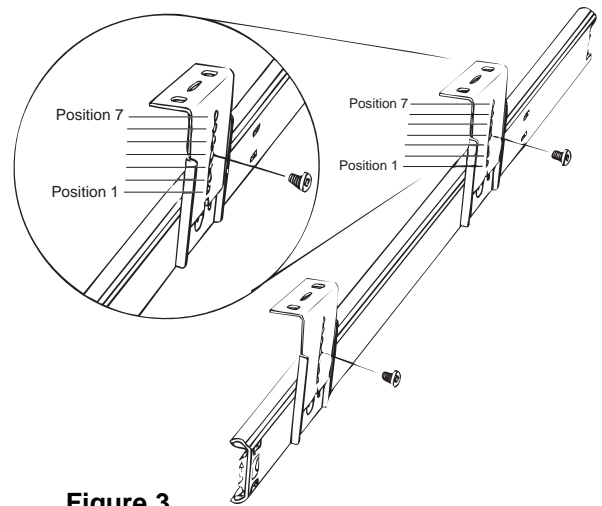


Figure 3

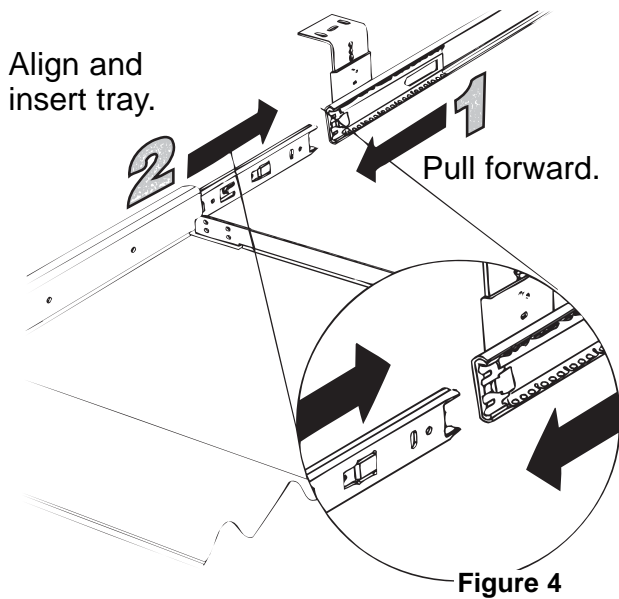


Figure 4

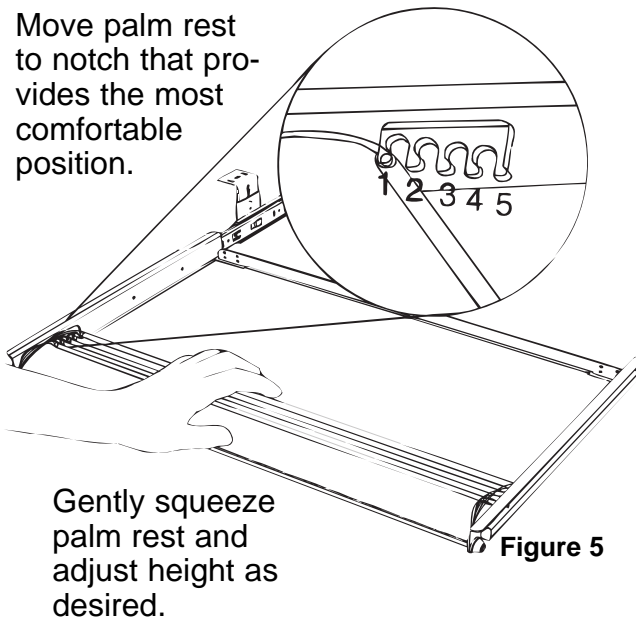


Figure 5

Step 5. Surface Preparation

Depending on whether the bracket direction is inward or outward- Use the dimensions provided on this sheet to layout the hole locations on the surface before drilling. Drill 4 pilot holes, for #8 x 5/8" screws, into the underside of the surface.

Step 6. Mounting

Attach the slide cabinet members to the underside of the surface, using #8 x 5/8" screws provided in the hardware kit. For now, only put screws in the front side to side slotted holes.

Step 7. Installation

With the slides mounted, first pull the ball bearings to the front end. Then insert the keyboard tray subassembly into the slides and push tray completely to closed position as shown in figure 4. (It is normal to encounter some resistant force when inserting the tray and closing it for the first time as the ball bearings must skid into place the last 25% of the travel.)

Step 8. Adjustment

Open and close the keyboard slowly. Check that nothing is binding and that the tray latches in the open position. (The latch is to hold the tray stationary during typing. To close the tray, just push.) Carefully loosen screws in surface and adjust slides as needed. Tighten screws securely and add additional screws through the center front to rear slotted holes to lock the tray in its final position.

Step 9. Operation

The keyboard tray is now ready for use. Place your keyboard on the tray and adjust the palm rest to your desired position, as shown in figure 5.