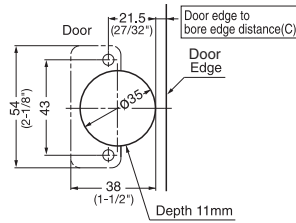


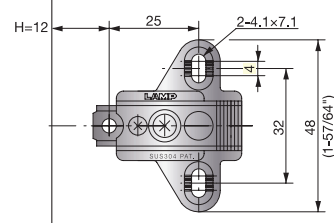
SUGATSUNE Stainless Steel 100° Concealed Hinges

- 100° opening
- Self closing
- Polished, Stainless Steel
- Hinge and plate sold separately
- Screw on, stainless steel screws included
- Slide on and tighten screw for hinge to plate attachment

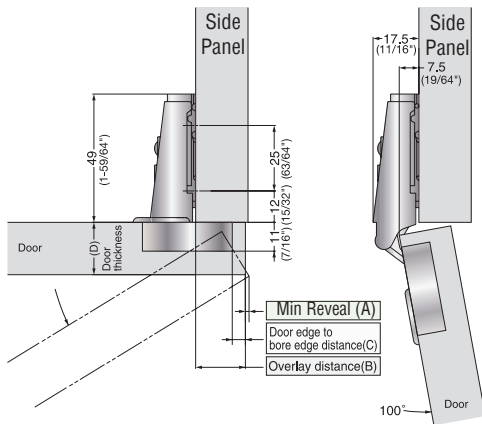
Cup Boring Pattern



Mounting Plate

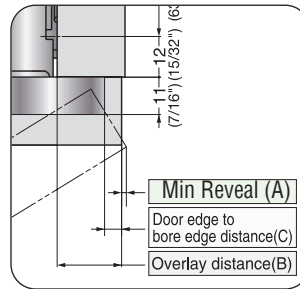


17-19mm (3/4") Overlay



Overlay Chart

Desired Overlay (B)	17	18	19
Door Edge to Bore Distance (C)	3	4	5



Reveal Chart (A)

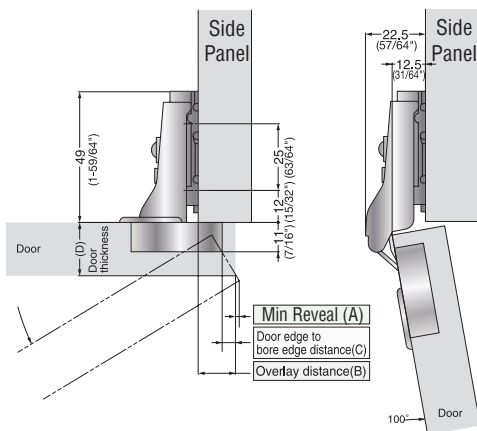
Door Thickness (D)	Reveal (A)
3-5	
15	0.5
16	0.7
17	0.8
18	1.0
19	1.2
20	1.4

Screws included

17-19mm Overlay

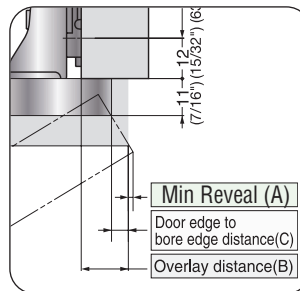
SUC4619 Hinge
SUP4A323W Plate

12-14mm (9/16") Overlay



Overlay Chart

Desired Overlay (B)	12	13	14
Door Edge to Bore Distance (C)	3	4	5



Reveal Chart (A)

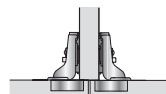
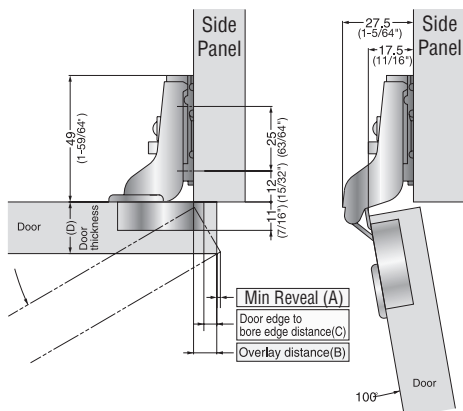
Door Thickness (D)	Reveal (A)
3-5	
15	0.5
16	0.7
17	0.8
18	1.0
19	1.2
20	1.4

Screws included

12-14mm Overlay

SUC4614 Hinge
SUP4A323W Plate

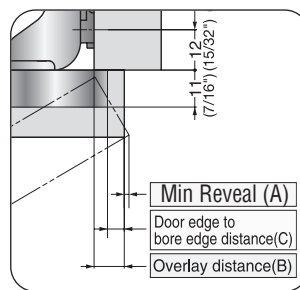
7-9mm (3/8") Overlay



Can also be used back to back on common side panel.

Overlay Chart

Desired Overlay (B)	7	8	9
Door Edge to Bore Distance (C)	3	4	5



Reveal Chart (A)

Door Thickness (D)	Reveal (A)
3-5	
15	0.5
16	0.7
17	0.8
18	1.0
19	1.2
20	1.4

Screws included

7-9mm Overlay

SUC469 Hinge
SUP4A323W Plate