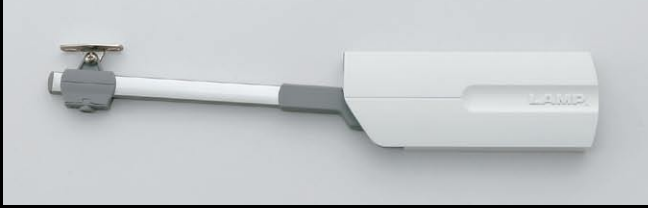


SLS-ELAN

EASY LIFT-UP STAY



- Lift-assist mechanism for extra light-opening with free stop feature.
- Offers smooth and soft downward movement preventing lids or doors from slamming shut.
- Easy to install by aligning the body to the edge of cabinet.
- Recognized by LGA for 40,000 cycles.

Designed to operate at room temperature 0°~40°C (32°~104°F).

■ 3 functions on 1 stay

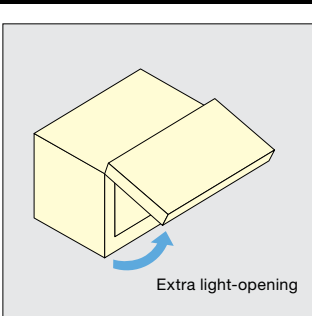
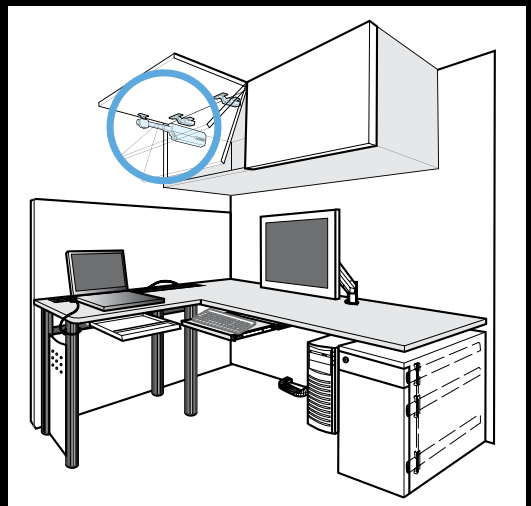
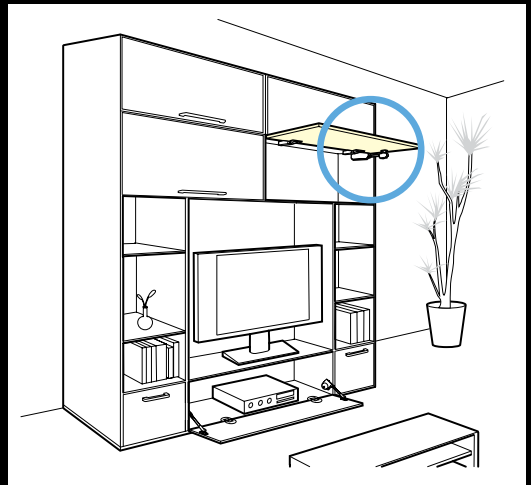
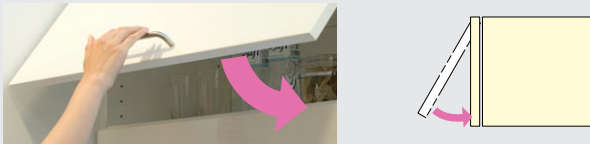
1. Lift-assist



2. Free stop



3. Soft-close



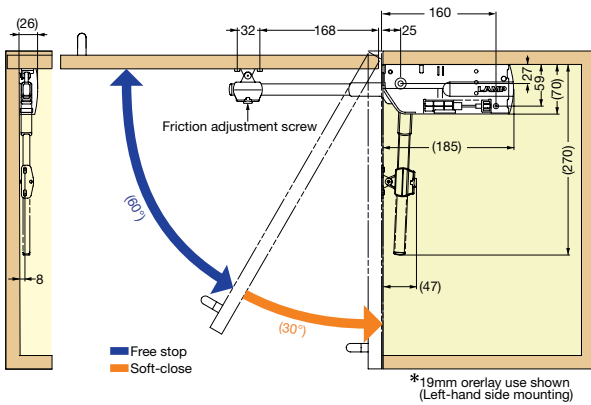
EASY LIFT-UP STAY



SLS-ELAN



- For UPWARD-OPENING FLAP DOOR with concealed, piano, butt, or drop hinges.
- Designed to provide effortless opening and hold door in closed and opened position.
- Damper equipped for soft & silent closing.
- Optional bracket for aluminum frame door available.
- Single or pair use allows wide range of door size / weights.
- Handed: Specific left and right hand mounting.

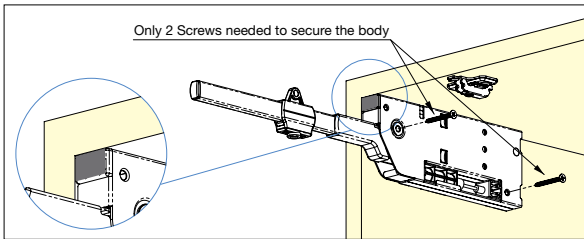


Door Weight Range Table (lbs.)

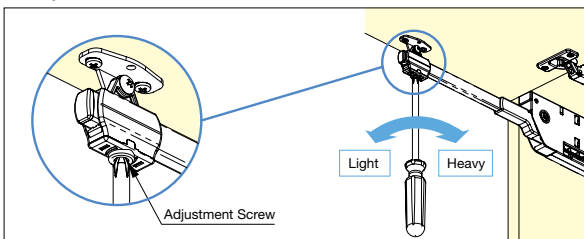
Door Height (inch)	Single use				Pair use			
	M-type		H-type		M-type		H-type	
	Min	Max	Min	Max	Min	Max	Min	Max
12"	8.0	10.8	10.8	14.5	16.0	21.7	21.7	29.0
13"	7.4	10.0	10.0	13.4	14.8	20.0	20.0	26.8
14"	6.9	9.3	9.3	12.4	13.7	18.6	18.6	24.9
15"	6.4	8.7	8.7	11.6	12.8	17.3	17.3	23.2
16"	6.0	8.1	8.1	10.9	12.0	16.3	16.3	21.8
17"	5.6	7.6	7.6	10.2	11.3	15.3	15.3	20.5
18"	5.3	7.2	7.2	9.7	10.7	14.4	14.4	19.3
19"	5.1	6.8	6.8	9.2	10.1	13.7	13.7	18.3
20"	4.8	6.5	6.5	8.7	9.6	13.0	13.0	17.4
21"	4.6	6.2	6.2	8.3	9.1	12.4	12.4	16.6
22"	4.4	5.9	5.9	7.9	8.7	11.8	11.8	15.8
23"	4.2	5.7	5.7	7.6	8.3	11.3	11.3	15.1
24"	4.0	5.4	5.4	7.3	8.0	10.8	10.8	14.5
25"	3.8	5.2	5.2	7.0	7.7	10.4	10.4	13.9
26"	3.7	5.0	5.0	6.7	7.4	10.0	10.0	13.4
27"	3.6	4.8	4.8	6.4	7.1	9.6	9.6	12.9
28"	3.4	4.6	4.6	6.2	6.9	9.3	9.3	12.4

*Single or pair use depending on door size and weight.

Easy Installation



Adjustment



Item No.	Type	Torque per piece	Material	Finish / Color	Weight (g)	Box (pcs)	Carton (pcs)	
SLS-ELAN-MR	Right	55 ~ 75kg·cm (48 ~ 65lbs·in)	• Aluminum • Steel • ABS	• Anodized • Galvanized • Light Grey	600	20	100	
SLS-ELAN-ML	Left							M-type (Medium Duty)
SLS-ELAN-HR	Right	75 ~ 100kg·cm (65~87lbs·in)						H-type (Heavy Duty)
SLS-ELAN-HL	Left							