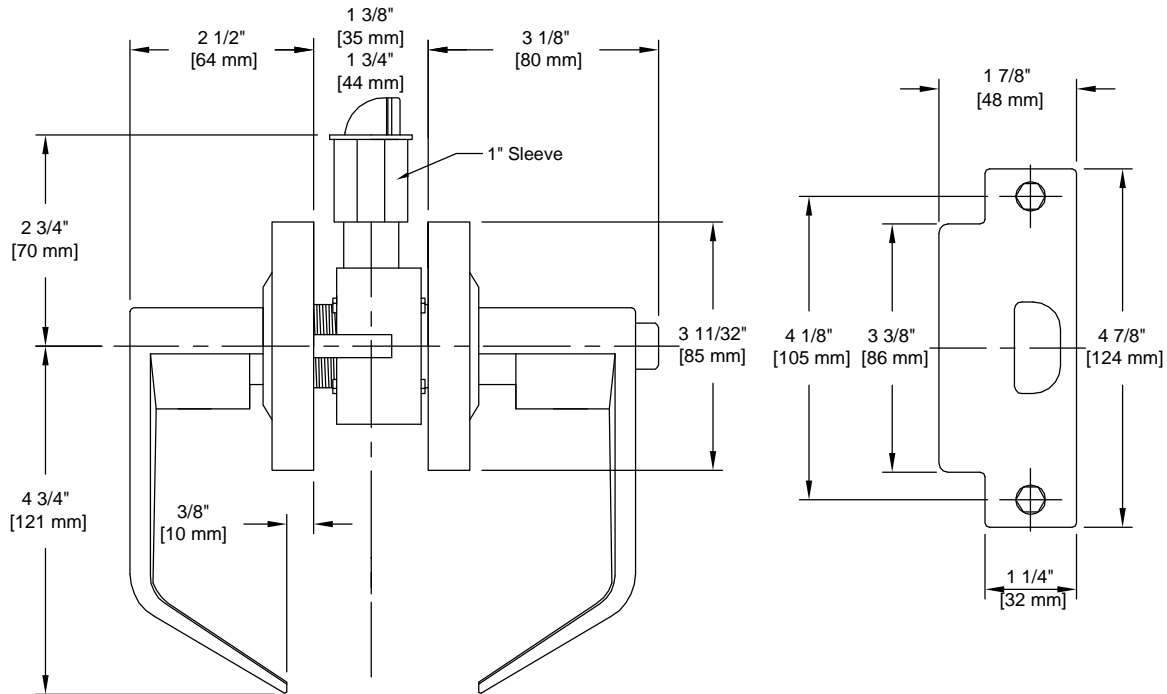


PRODUCT DATA SHEET

Product Description: Lock lever, entry, reversible, Schlage "SC 4 Keyway", ANSI Grade 2. Removable, non interchangeable core. Handles are fabricated from zinc and escutcheon is fabricated from stainless steel in a US26D satin chrome finish. The outside lever is locked or unlocked by key. Pushing button in inside lever locks outside lever. Inside lever is always unlocked providing emergency exit. Full length lever handle with 3/8" return. Free wheeling clutch design. ADA complaint. UL10C 3 hour fire rated. Ships with mounting hardware. 2 3/8" latch (product #CL60MM) sold separately.



Door Prep: Cross Bore 2 1/8", Edge Bore 1", Latch Face 1 1/8" x 2 1/4"

Backset: 2 3/4" (2 3/8" latch sold separately)

Door Thickness: Standard Doors 1 3/8" to 1 3/4"

Cylinder: 6-Pin Removable Core

Strike Plate: 4 7/8", 3 3/8" Lip Strike

Bolt: 1/2" Throw, Stainless Steel

ANSI/BHMA: A156.2 Grade 2

REKEY OPTIONAL



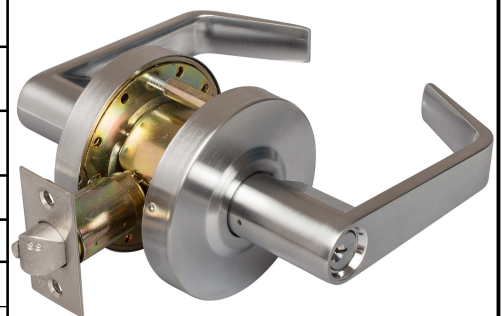
Overall Size: 6 13/32" W X 3 11/32" H X 3 1/8" D

Material: Zinc Handles, Stainless Steel Escutcheon

Finish: US26D Satin Chrome

Cross Reference

Manufacturer	Part Number



Description:

Lock Lever, Entry, Reversible, SAT Style Handle, Schlage "SC 4", UL 10C, ANSI Grade 2

Part Number:

86500

Date

06/16

Rev.

04

Sheet 1 of 1