

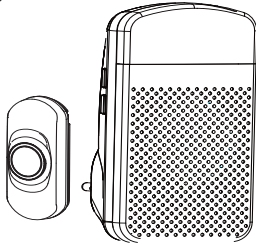


SAFEGUARD SUPPLY CONTACT INFORMATION

Phone: (678) 214-4212 |email: info@safeguardsupply.com
2260 Moon Station Ct. NW #110 | Kennesaw, GA 30144 USA

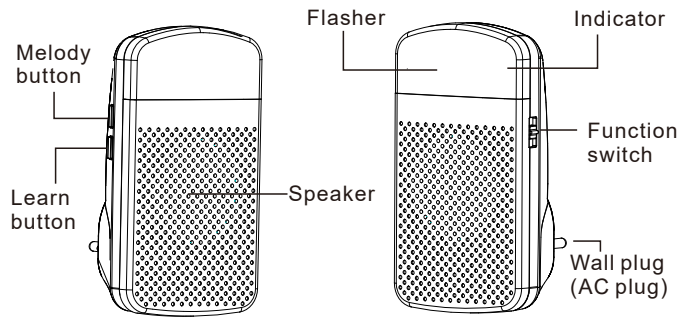
LRA-D1000S Plug-In Strobe Kit User Manual

(LRA-DCRXS+LRA-PBTXA)

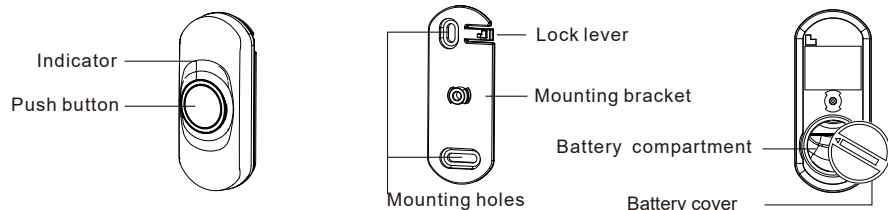


PARTS & FUNCTION

LRA-DCRXS Plug-In Strobe Receiver



LRA-PBTXA Wireless Push Button



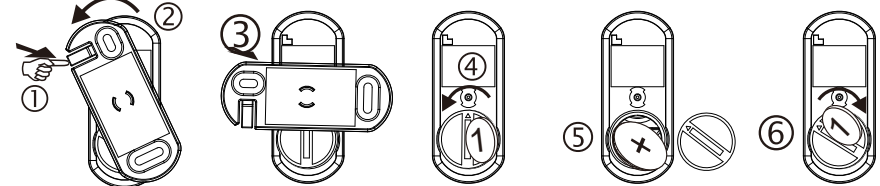
- Each LRA-DCRXS (receiver) can pair with a total of two wireless transmitters
- Once two (2) transmitters have been paired to a receiver, you cannot add an additional transmitter unless you delete a transmitter from the receiver
- There is no limit to the number of receivers you can pair with a transmitter

PRODUCT FEATURES

- Wireless range from transmitter to receiver is up to 1,000 ft.(line of sight)
- Each receiver can pair with a total of two (2) transmitters
- Receiver has three (3) operating modes; a) sound only, b) strobe only & c) sound & strobe
- Assign one (1) of eighteen (18) available melodies to each transmitter
- Strobe has two flashing patterns; a) slow & b) fast
- Operating frequency: 915MHz
- Operating temperature: 32F to 104F
- Product dimensions: 2.5" L x 1.2" W x 4.72" H
- Product weight: .25 lbs

LRA-PBTXA Push Button

Battery Installation



THINGS TO KNOW PRIOR TO USE

- These instructions illustrate pairing a push button to the receiver. For other types of transmitters, follow the same process in step #5 in the "TRANSMITTER PAIRING & MELODY SELECTION"
- If your products are not automatically paired, please refer to the section below labeled "TRANSMITTER PAIRING & MELODY SELECTION"
-

1. Use the finger to unlock the lock lever
2. Rotate the mounting bracket and bell press into 90 degree.
3. Remove the mounting bracket from the unit.
4. Rotate the Battery cover using a coin.
5. Insert a CR2032 battery to battery compartment provided.
6. Close the battery cover using a coin.

TRANSMITTER PAIRING & MELODY

If push button & receiver are purchased together as a kit (LRA-D1000S) then the included push button is already paired to the included receiver.

Step 1: Insert the included battery into the transmitter (push button).

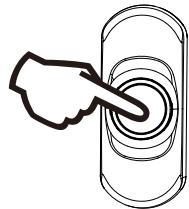
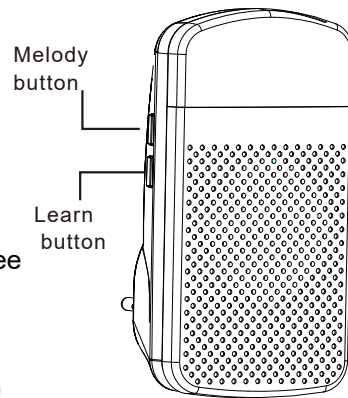
Step 2: Plug the receiver into a standard wall outlet.

Step 3: Press on hold the • Learn button for three seconds. A red LED light will blink indicating the unit is in pairing mode. If the light is solid, this means there are already two transmitters paired and you must clear the transmitter memory from the receiver.

Step 4: Press the melody selector button to scroll through available melodies. Once you hear a melody you prefer, do not press any button as the melody is set for the transmitter (push button).

Step 5: Once the melody is selected, trigger the transmitter by pressing the push button. If you are pairing a different type of transmitter, trigger that transmitter by following the instructions provided for that transmitter.

Step 6: If successful, the receiver will generate a short tone. Press the learn button again to exit the programming mode. The unit is now ready to use.



CHANGING THE MELODY

Press & hold the • learning button for 3 seconds to enter the pairing mode. Press the ♪ melody selector button to select the melody desired. Once you hear the melody you want for the transmitter, trigger the transmitter to lock in that sound

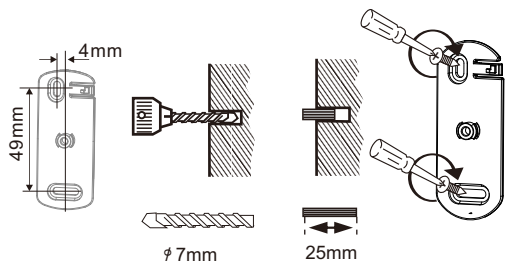
CLEARING TRANSMITTER MEMORY FROM RECEIVER

The receiver can only pair with two (2) transmitters at a time. If you need to replace a transmitter after two are already locked in, you must delete all memory from the receiver by following the instructions below.

Press & hold the • learn button for 3 seconds to enter the pairing mode. Press & hold the • learn button & ♪ melody selector button together for 3 seconds to delete the memory.

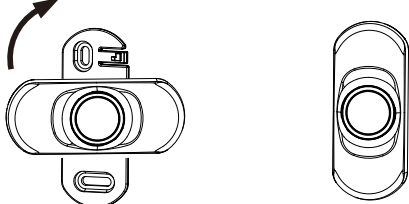
The receiver will generate a beep tone to indicate all transmitter memory is deleted. The red LED will change to blink. Now you can pair new transmitter to the receiver.

LRA-PBTA MOUNTING OPTIONS



Requires an electric drill for holes to fix the wall bracket with the provided ram plug and screws.

Put the push button into the bracket



Place the push button into the bracket at a 90 degree angle. Rotate clockwise until you feel it click into place.

Safety Instructions

Warning: To prevent fire or shock hazard. Do not expose this unit to rain or moisture.

| | | |
|---|--|--|
| | CAUTION RISK OF ELECTRIC SHOCK DO NOT OPEN | |
| The lightning flash with an arrowhead within a triangle alerts you to uninsulated dangerous voltage within the product's enclosure that could cause an electric shock | TO REDUCE THE RISK OF ELECTRIC SHOCK DO NOT REMOVE COVER (OR BACK) NO USER SERVICEABLE PARTS INSIDE. REFER SERVICING TO QUALIFIED PERSONNEL. | The exclamation point within a triangle alerts you to presence of important operating, maintenance and servicing instructions in this user's manual. |

FCC Statement:

This equipment has been tested and found to comply with the limits for a Class B digital device, pursuant to part 15 of the FCC Rules. These limits are designed to provide reasonable protection against harmful interference in a residential installation. This equipment generates, uses, and can radiate radio frequency energy and, if not installed and used in accordance with the instructions, may cause harmful interference to radio communications. However, there is no guarantee that interference will not occur in a particular installation. If this equipment does cause harmful interference to radio or television reception, which can be determined by turning the equipment off and on, the user is encouraged to try to correct the interference by one or more of the following measures:

- Reorient or relocate the receiving antenna.
- Increase the separation between the equipment and receiver.
- Connect the equipment to an outlet on a circuit different from that to which the receiver is connected.

This device complies with part 15 of the FCC rules. Operation is subject to the following two conditions: (1) This device may not cause harmful interference, and (2) this device must accept any interference received, including interference that may cause undesired operation.

Note: Modifications to this product will void the user's authority to operate this equipment.

