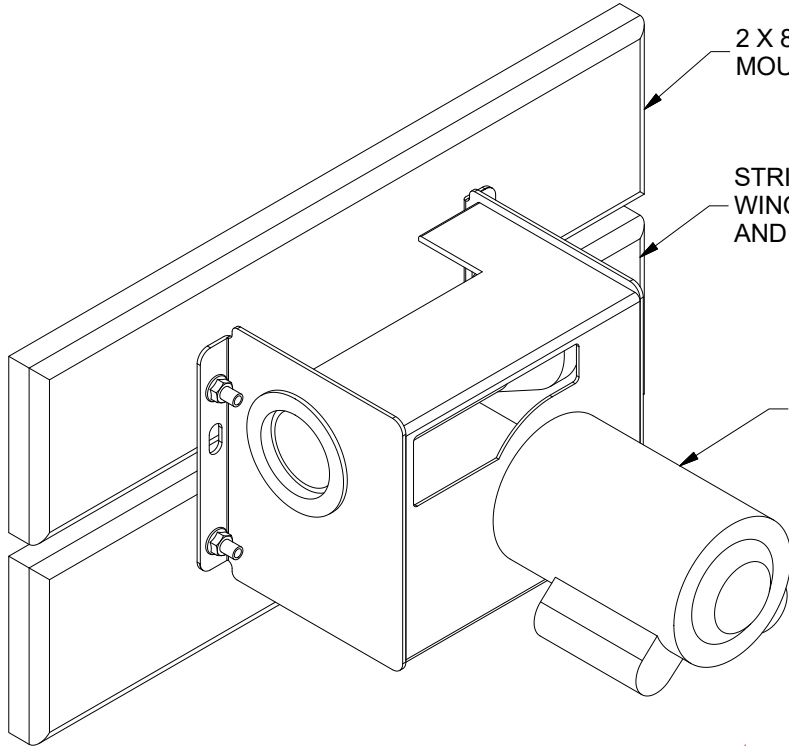




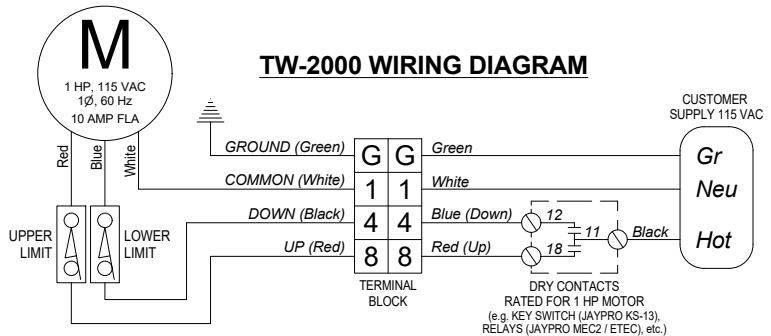
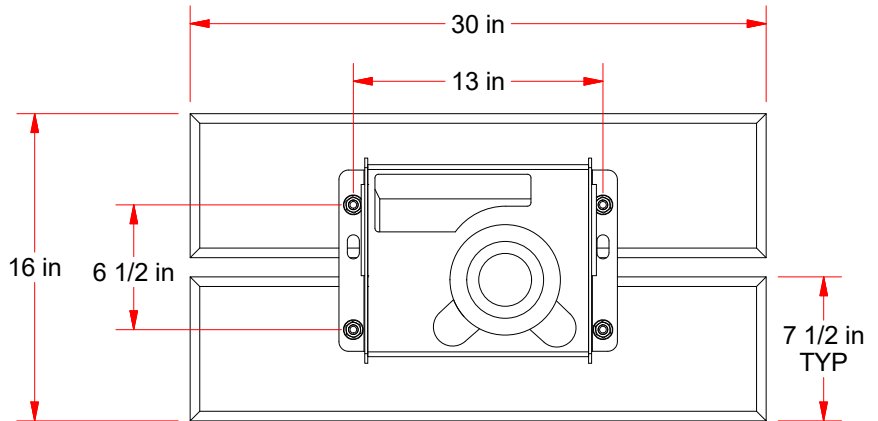
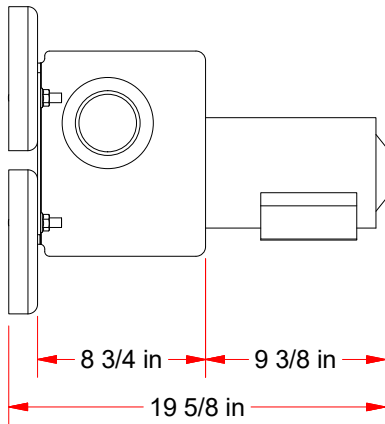
TW-2000KT1 - WALL MOUNTED ELECTRIC WINCH



2 X 8 SOUTHERN YELLOW PINE MOUNTING STRINGERS

STRINGERS SUPPLIED WITH PRE-DRILLED WINCH MOUNTING HOLES, FINISHED EDGES, AND 2 COATS OF CLEAR LACQUER

1 HP HI-TORQUE MOTOR
110 VOLT, SINGLE PHASE
(KS-13 KEY SWITCH INCLUDED)



PROPER WINCH PERFORMANCE (E.G. LINE PULL) IS BASED ON 115 VOLTS AT THE MOTOR TERMINALS; GAUGE WIRE ACCORDINGLY. ALL WIRES, WIRING, CONDUIT AND DEVICE BOXES SHALL BE SUPPLIED BY THE ELECTRICAL CONTRACTOR. THE ELECTRICAL CONTRACTOR SHALL WIRE TO ALL NATIONAL AND LOCAL CODES AND GROUND PROPERLY.

PROJECT NAME _____

PROJECT NUMBER _____

ARCHITECT _____

CONTRACTOR _____

NOTES _____



TW-2000KT1 ELECTRIC WINCH WITH WALL MOUNTING KIT

© COPYRIGHT 2017 JAYPRO SPORTS, LLC. ALL RIGHTS RESERVED
THIS PRINT IS THE PROPERTY OF JAYPRO SPORTS, LLC. AND MAY NOT BE REPRODUCED WITHOUT WRITTEN PERMISSION

www.jaypro.com
(800) 243-0533
976 Hartford Turnpike
Waterford, CT 06385 USA



TW-2000KT1 - WALL MOUNTED ELECTRIC WINCH

SPECIFICATION SHEET

The basketball positioning TW-2000KT1 *TorkWinch*® Wall Mounted Kit shall be a definite purpose electric winch designed specifically for use on basketball backstop positioning applications with wall mounting stingers. The TW-2000KT1 shall be designed to the highest standards in terms of safety, simplicity of installation, space efficiency, attractive appearance and ease of use.

The winch shall position the backstop by raising and lowering the basketball unit. The winch shall be driven by a 1 HP, instantly reversing, 110 volt, single phase electric torque motor utilizing a 3-wire control system. The backstop winch shall deliver at least 800 lbs. / 363 kg. of line pull at a speed of 11 feet / 3.4 meters per minute and be load tested to 2100 lbs. of line pull.

The drum shall be grooved for a 1/4" 7 x 19 aircraft cable to facilitate smooth take-up of the cable and proper spooling of the cable and shall travel 25 feet / 7.7 meters on one (1) layer, 45 feet / 13.7 meters on two (2) layers. Drum shall be directly supported at the cable winding diameter for maximum strength and rigidity. Drum shall be supplied with a pressure roller, with torsion spring tensioning, to ensure that the cable "tracks" in the grooves even under slack cable conditions. The winch shall employ a double worm reduction system and uses composite material to provide superior strength and life as well as being completely oil-free. The winch shall require no liquid lubricants and no V belts or chains thereby eliminating maintenance to the owner while increasing safety. The winch shall have a unique uni-directional worm brake, together with the inherently self locking composite worm drive, assures positive dynamic braking and reliable holding of the cable drum.

The winch shall have integral adjustable upper and lower travel limit switches making the setting of stop positions easy and accurate. A special 3:1 speed-increasing drive to the limit switch drive screw increases the precision and repeatability of the settings. The winch shall utilize a flush mounted, 3-position key switch ensuring that the motor cannot be switched both up and down simultaneously. Additional operators are available and must be specified at time of order or specification. Wiring of all electrical components shall be in accordance with national and local electrical codes, as well as specific wiring instructions provided by Jaypro.

The winch shall utilize a specially designed torque motor for increased line pull and increased motor reliability. Shall also incorporate a built in thermal overload switch with automatic reset.

TW-2000KT1 shall include (2) 2" X 8" X 30" yellow southern pipe wood stringers for mounting the electric winch directly to the wall. Stringers will be supplied with routed edges and finished with two (2) coats of clear lacquer. Wood stringers are supplied pre-drilled and counterbored holes to assemble the winch for quick and easy assembly. Hardware to attach the winch to the stringers is included. All wall mounting anchors shall be specified and supplied by others. **Systems that are not supplied with holes pre-drilled and counterbored shall not be approved as equals.**

WARRANTY

TW-2000KT1 shall have a one (1) year replacement warranty on all defects in material and workmanship. Any winch without this warranty does not meet these specifications and should not be considered equal.

OPTIONAL CONTROLLERS

- MEC2 Master Equipment Controller 2 (*Refer to MEC2 Specification Sheet*)
- ETEC Easy Touch Equipment Controller (*Refer to ETEC Specification Sheet*)
- TMX-DRX Radio Controller (*Refer to TMX-DRX Specification Sheet*)



TW-2000KT1

www.jaypro.com / (800) 243-0533 / 976 Hartford Tpke, Waterford, CT 06385 USA
SUBJECT TO CHANGES IN DESIGN AND MANUFACTURING
© COPYRIGHT 2017 JAYPRO SPORTS, LLC. ALL RIGHTS RESERVED
Sheet 2 of 2