

BADGER® 100®

DUAL ACTION, INTERNAL MIX SERIES

Badger's 100 Series professional airbrushes offer a variety of styles - gravity feed, slotted gravity feed, and side feed - to satisfy every professional's needs. Each of these exceptional airbrushes offers precision performance for a soft spray pattern and tight line detail. The 100 Series features correctly proportioned body weight providing perfect balance and comfort for the most exacting professional applications.

MODEL 100 LG GRAVITY FEED

This airbrush runs the gamut from fine detail to background coverage. A 1/3oz. (10.5ml) permanently mounted color cup lets you get close to your work, and allows easy cleaning and color changing. The long-standing choice of fine artists, illustrators, and decorative painters. (Available as Fine, Medium and/or Heavy).

MODEL 100 G GRAVITY FEED

This airbrush is designed for detail. It features a permanent, top-mounted 1/16oz. (2ml) color cup angled to allow work on horizontal surfaces. Perfect for fine artists, illustrators, and cake decorators. (Available in Fine and/or Medium.) (100GB for continuous flow, single action bakery airbrush)

MODEL 100 SG GRAVITY FEED

For extremely fine precision work, the 100 SG has a built-in fluid cavity. It's the choice of professional fingernail artists. (Available as Fine and/or Medium).

MODEL 100 SIDE FEED

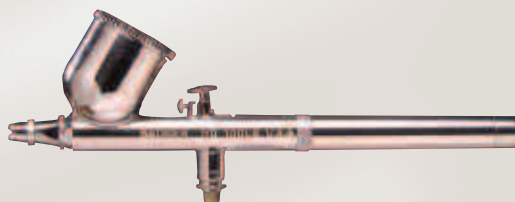
A traditional photo retoucher's airbrush, the 100 side feed has a rotational color cup for horizontal or vertical work. Fine artists, photo retouchers, and illustrators will find this model to be efficient. (Available in left or right hand models with Fine and/or Medium nozzles/needles).

FEATURES

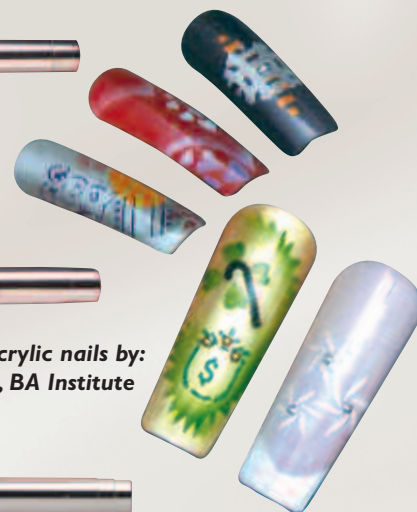
- * Self-lubricating PTFE needle bearing enables continuous proper paint flow and prevents needle wear
- * Non-slip, one-piece trigger
- * PTFE head seal assures efficient air flow
- * Winged back lever design for easy reassembly and smooth trigger control
- * Fine (F) - pencil line to 2" (51mm) spray pattern
- * Medium (M) - 1/32" (0.8mm) to 2 1/2" (63mm) spray pattern
- * Heavy (H) - 1/16" (1.5mm) to 3" (76mm) spray pattern
- * For sets see page 10

The Model 100 Series sprays properly reduced acrylics and pre-reduced materials such as inks, dyes, watercolors, gouaches, Air-Opaque™, Air-TeX® and MODELflex® airbrush colors.

*Food coloring on cake
by: Julia Gawron*



*Nail Flair on acrylic nails by:
Sandy Bedford, BA Institute*



Before Mac

After Mac

Weathering by: Mac McCalla



OMNI™ DETAIL AIRBRUSHES

DUAL ACTION, INTERNAL MIX SERIES

The Omni™ series was designed for tight detail to broad spraying using a “One Tip-One Needle” combination. When trying for that one last detail, just the right blend or a great smooth finish—Omni™ detail guns are ideal. Omni™ airbrushes work equally well at low or high pressures for varying applications. Besides performing well with finely ground colors, Omni™ airbrushes can handle heavier automotive paint with no need to change tips/needles. Designed with state-of-the-art engineering, Omni™ airbrushes are manufactured to the tightest possible tolerances. Omni™ airbrushes feature heavy nickel chrome plating, superior balance, solvent resistant o-rings and numerous other performance enhancements. Omni™ airbrushes are known worldwide as the performance and price preference to other similarly designed airbrushes.

SPECIAL OMNI™ FEATURE

The reversible air cap guard is unique and exclusive to Omni™ airbrushes—reversing the air cap guard creates a smooth, aerodynamically rounded area at the tip/needle intersection enabling optimum air flow efficiency for the sharpest and finest lines. The “reverse-a-guard” air cap allows for easy removal of tip dry. It can also be utilized to protect the needle tip for novice airbrushers or in more delicate airbrush applications.

OTHER FEATURES

- * Counter balanced cut-away handle
- * Stainless steel needle
- * Self-centering, self-sealing fluid tip
- * Solvent resistant “O” rings
- * Heavy nickel chrome plating
- * Attached needle tube – rocker lever assembly
- * One piece trigger
- * Adjustable trigger tension
- * Each model hand tested in actual use
- * Adjustable needle bearings (4000 and 6000 models)
- * “Reverse-a-guard” air cap
- * Adaptable for use with all major brand airbrush jars and color cups
- * One year limited warranty on all components
- * Lifetime labor warranty



Reverse-a-guard
air cap



Illustration on
canvas by:
Michael Smith



Model	Type/Action	Reservoir Capacity	Fluid Viscosity	Spray Pattern
3000	BFDA	1/4 oz. cup to 3 oz. jar	Thin to the consistency of	2x hairline to 1"
4000	GFDA	1/3 oz. fixed cup	2% milk or thinner.	
5000	GFDA	1/8 oz. fixed cup		
6000	SFDA	1/3 oz. to 1 oz. cup		
Omni Nailaire	GFDA	1/32 oz. fixed reservoir		
Matrix	BF/GF DA	1/16 oz. rotational cup		

BF = Bottom Feed GF = Gravity Feed SF = Side Feed
DA = Dual Action (Color & Air Controlled with the Trigger)
SA = Single Action (Air Controlled with Trigger – Color Controlled Separately)