

Binks Model 2100™ SPRAY GUN 2100-XXXX-X

Your new Binks spray gun is exceptionally rugged in construction, and is built to stand up under hard, continuous use. However, like any other fine precision instrument, its most efficient operation depends on a knowledge of its construction, operation, and maintenance. Properly handled and cared for, it will produce beautiful, uniform finishing results long after other spray guns have worn out.

TYPES OF INSTALLATION

SIPHON FEED CUP HOOKUP

Air pressure for atomization is regulated at extractor. The amount of fluid is adjusted by fluid control screw on gun, viscosity of paint, and air pressure (see figure 1).

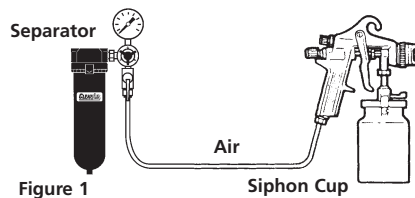


Figure 1

PRESSURE FEED CUP HOOKUP

For fine finishing with limited spraying.

Air pressure for atomization is regulated at extractor; fluid pressure at cup regulator. For heavy fluids and internal mix nozzle spraying, fluid adjusted by control screw on gun.

Pressure cup also available less regulator (see figure 2).

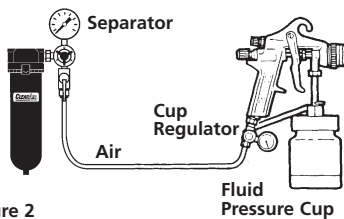


Figure 2

PRESSURE FEED TANK HOOKUP

For medium production spraying (single regulator).

Air pressure for atomization is regulated at extractor, fluid pressure at tank regulator (see figure 3).

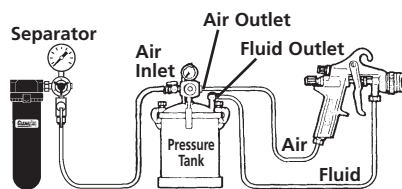
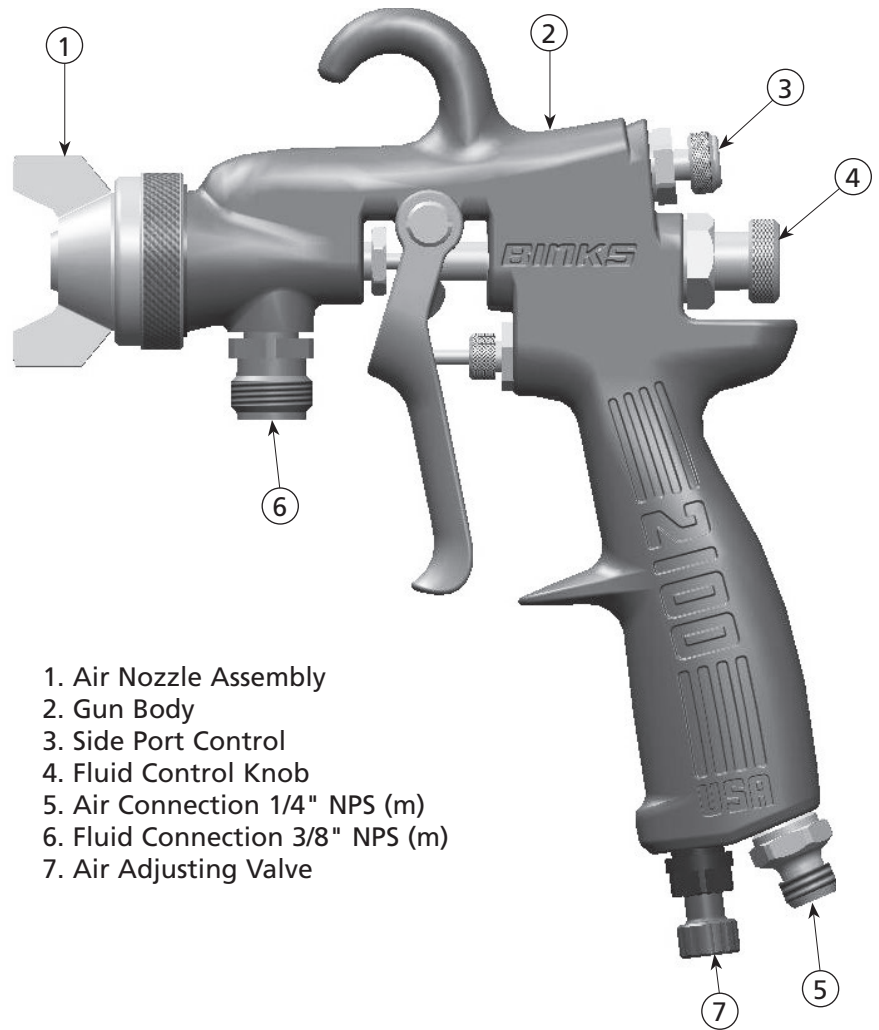


Figure 3



1. Air Nozzle Assembly
2. Gun Body
3. Side Port Control
4. Fluid Control Knob
5. Air Connection 1/4" NPS (m)
6. Fluid Connection 3/8" NPS (m)
7. Air Adjusting Valve

PRESSURE FEED TANK HOOKUP

For portable painting operations (double regulator).

Air pressure for atomization and fluid supply is regulated by two individual air regulators on tank (see figure 4).

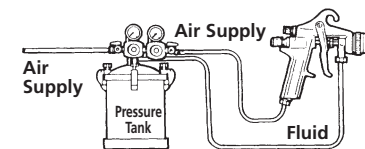


Figure 4

PRESSURE FEED CIRCULATING HOOKUP

For heavy production spraying.

Air pressure atomization regulated at extractor. Fluid pressure regulated at fluid regulator (see figure 5).

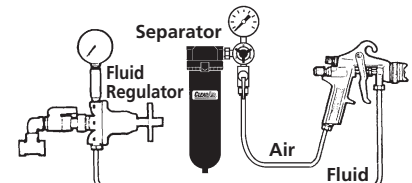
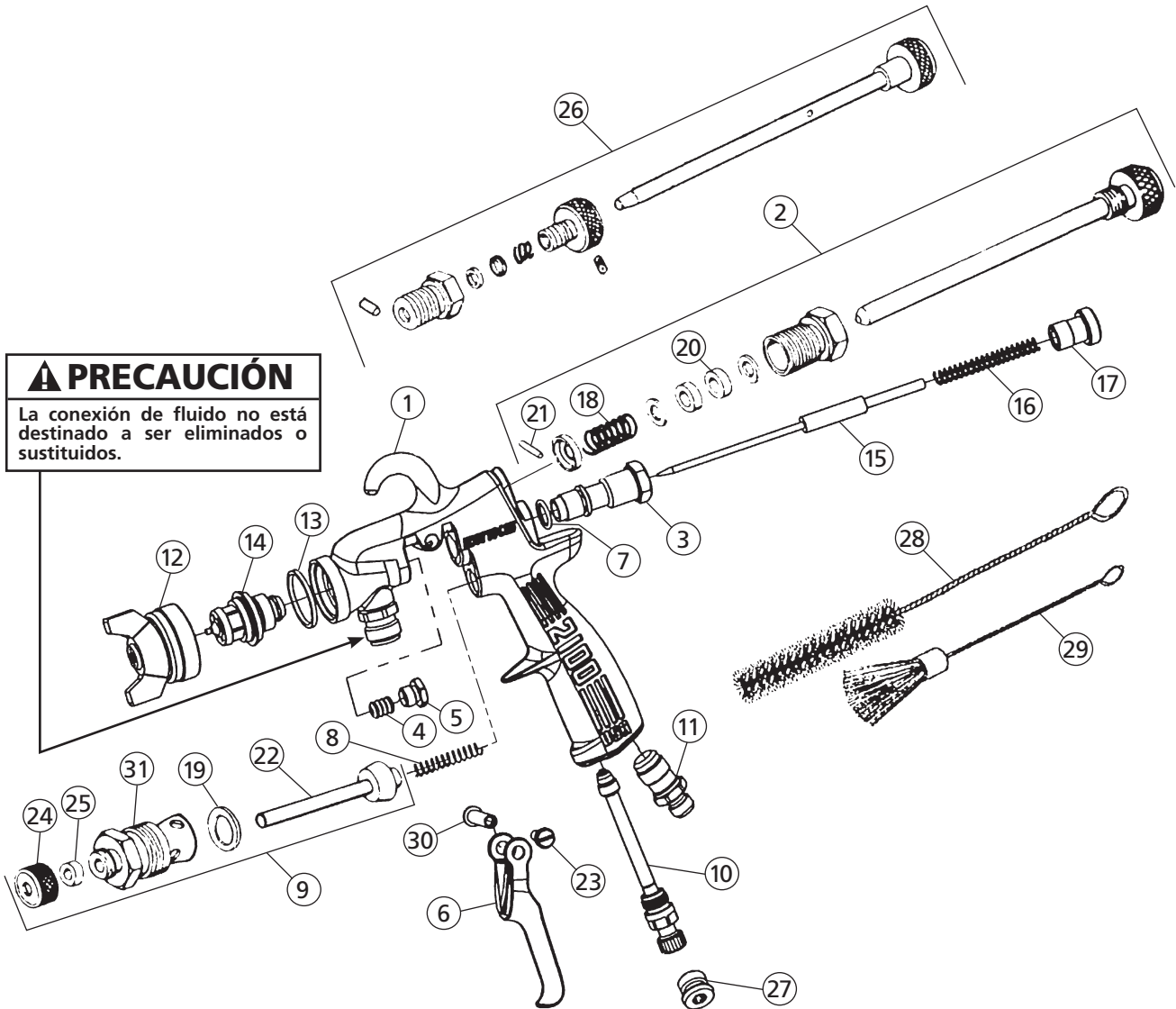


Figure 5

PISTOLA PULVERIZADORA DE ALIMENTACIÓN A SIFÓN Modelo 2100™ de Binks



LISTA DE PIEZAS

Al hacer su pedido, sírvase especificar el Número de la pieza

ARTÍCULO	PIEZA	DESCRIPCIÓN	CANT.	ARTÍCULO	PIEZA	DESCRIPCIÓN	CANT.
NO.	NO.			NO.	NO.		
1	—	2100 CUERPO DE LA PISTOLA.....	1	17	54-1007	TORNILLO DE CONTROL.....	1
2	54-3347	CONJUNTO DEL CONTROL DEL PUERTO LATERAL.....	1	18	54-304-5)+	RESORTE.....	1
3	54-1013	CUERPO DEL MATERIAL.....	1	19	20-3757+	JUNTA TÓRICA.....	1
4	2-28-5)+	EMPAQUE DE PTFE.....	1	20	54-738-5)+	EMPAQUE.....	1
5	56-164	TUERCA DEL EMPAQUE.....	1	21	54-1014-5)+	CLAVIJA.....	1
6	54-5458	2100 DISPARADOR.....	1	22	54-1025+	CONJUNTO DEL VÁSTAGO DE LA VÁLVULA.....	1
7	20-5285-5)+	EMPAQUETADURA DE VITÓN DE LA JUNTA TÓRICA....	1	23	82-126-5)	TORNILLO.....	1
8	54-750-5)+	RESORTE.....	1	24	82-135-5)	TUERCA.....	1
9	54-1236	CONJUNTO DE LA VÁLVULA DE AIRE.....	1	25	82-158-5)+	EMPAQUE.....	1
10	SGK-457	CONEXIÓN DE AIRE DE LA VÁLVULA DE AJUSTE DE AIRE.	1	26	54-1780•	CONTROL DEL PUERTO LATERAL DE CAMBIO RÁPIDO. (OPCIONAL)	1
11	54-768	BOQUILLA DE AIRE.....	1	27	JGA-132•	TAPÓN (OPCIONAL).....	1
12	*VER NOTA AL PIE	EMPAQUETADURA.....	1	28	82-469	CEPILLO REDONDO.....	1
13	54-918-5)+	GUARNICIÓN.....	1	29	OMX-88	CEPILLO PLANO.....	1
14	*VER NOTA AL PIE	BOQUILLA DE FLUIDO.....	1	30	54-1020	PERNO.....	1
15	—	AGUJA DE FLUIDO.....	1	31	54-1010	CUERPO DE LA VÁLVULA.....	1
16	54-1347-5)+	RESORTE.....	1				

○ Disponible sólo como paquete de 5.

+ Indica piezas en el kit de reparación 6-229.

* Empaque de aguja alternativa (opcional) 54-747-5.

• Artículo accesorio.

* Asegúrese de especificar el número estampado en la boquilla de aire y en la boquilla de fluido o consulte la Tabla de selección de boquilla.

# DESIGNACIÓN BOQUILLA DE FLUIDO	NÚMERO DE PIEZA	PARA ORIFICIO DE FLUIDO PULGADAS	ORIFICIO MM	DESIGNACIÓN DE AGUJA DE PISTOLA MODELO 2100™	NÚMERO DE PIEZA DE AGUJA
63SS	45-6301	0.028	0.8	563	47-56300
63ASS	45-6311	0.040	1.1	563A	47-56310
63BSS	45-6321	0.046	1.2	563A	47-56310
L3BSS	45-6329	0.046	1.2	563A	47-56310
63CSS	45-6331	0.052	1.3	563A	47-56310
63CVT	45-6332	0.052	1.3	573CVT	47-57302
64VT	45-6402	0.064	1.6	574VT	47-57402
65SS	45-6501	0.059	1.6	565	47-56500
66SS	45-6601	0.070	1.8	565	47-56500
66XSS (Extrusión)	45-6608	0.040	1.1	565	47-56500
L6SS	45-6605	0.070	1.8	565	47-56500
67SS	45-6701	0.086	2.2	567	47-56700
67VT	45-6702	0.086	2.2	577VT	47-57702
68SS	45-6801	0.110	2.8	568	47-56800
68VT	45-6802	0.110	2.8	578VT	47-57802
59ASS	45-5911	0.171	4.3	559	47-55900
59BSS	45-5912	0.218	5.5	559	47-55900
59CSS	45-5913	0.218	7.1	559	47-55900

# DESIGNACIÓN BOQUILLA DE AIRE (CASQUILLO DE AIRE)	NÚMERO DE PIEZA
21MD-1	46-21MD-1
21MD-2	46-21MD-2
21MD-3	46-21MD-3
63P	46-6000
63PB	46-6002
63PH-1	46-6061
63PR	46-6079
63PW	46-6091
64PA	46-6007
66PD	46-6013
66PE	46-6014
66PH	46-6016
66R	46-6041
66S	46-6018
66SD	46-6020
66SK	46-6082
66SD-3	46-6092
66SDJG	46-6103
67PB	46-6026
67PD	46-6028
68PB	46-6032

# DESIGNACIÓN BOQUILLA DE AIRE (CASQUILLO DE AIRE)	NÚMERO DE PIEZA	PIEZAS ADICIONALES REQUERIDAS
101	46-2101	54-4512 BASE Y ANILLO
200	46-2200	54-4512 BASE Y ANILLO
201	46-2201	54-4512 BASE Y ANILLO
206	46-2206	54-4512 BASE Y ANILLO
R-6SS	46-1042	54-4512 BASE Y ANILLO
242	46-2242	54-2065 ANILLO
244	46-2244	54-2065 ANILLO
250	46-2250	54-2065 ANILLO
252	46-2252	54-2065 ANILLO
262	46-2262	54-2065 ANILLO
706	46-2013	54-372 BASE
709SS	46-2020	54-372 BASE