

# PLUS® HIGH EFFICIENCY GRAVITY FEED GUN

# PLUS®

## Includes:

- 1.2mm, 1.3mm, and 1.4mm fluid tips
- 900cc aluminum cup with push-on lid
- HAV-511 high output air adjusting valve with gauge
- Fluid filter, gun hook

Order No.	Model No.	Type	Fluid Tip (mm)	Inlet Pressure	Application
110264	GFG-670	HE	1.2, 1.3	25–35 PSI	Basecoats
				30–40 PSI	High solids clearcoats
			1.4	30–40 PSI	Single stages
				30–40 PSI	Low solids clearcoats
				30–40 PSI	Single stages

## PLUS® Gravity Feed High Efficiency Air Cap

#410 air cap	Primers, basecoats, clearcoats, single stage and low VOC	Air Cap Order No. 192174	Air Cap Model No. AV-440-410	30–40 PSI Inlet	9–11 CFM	Air Cap Pattern
Fluid tips	1.0mm, 1.2mm, 1.3mm, 1.4mm (Included tip sizes shown in bold)					12½"



EPA Compliant.  
Approved in most  
HVLP areas.

Refer to Service Bulletin: SB-2-194

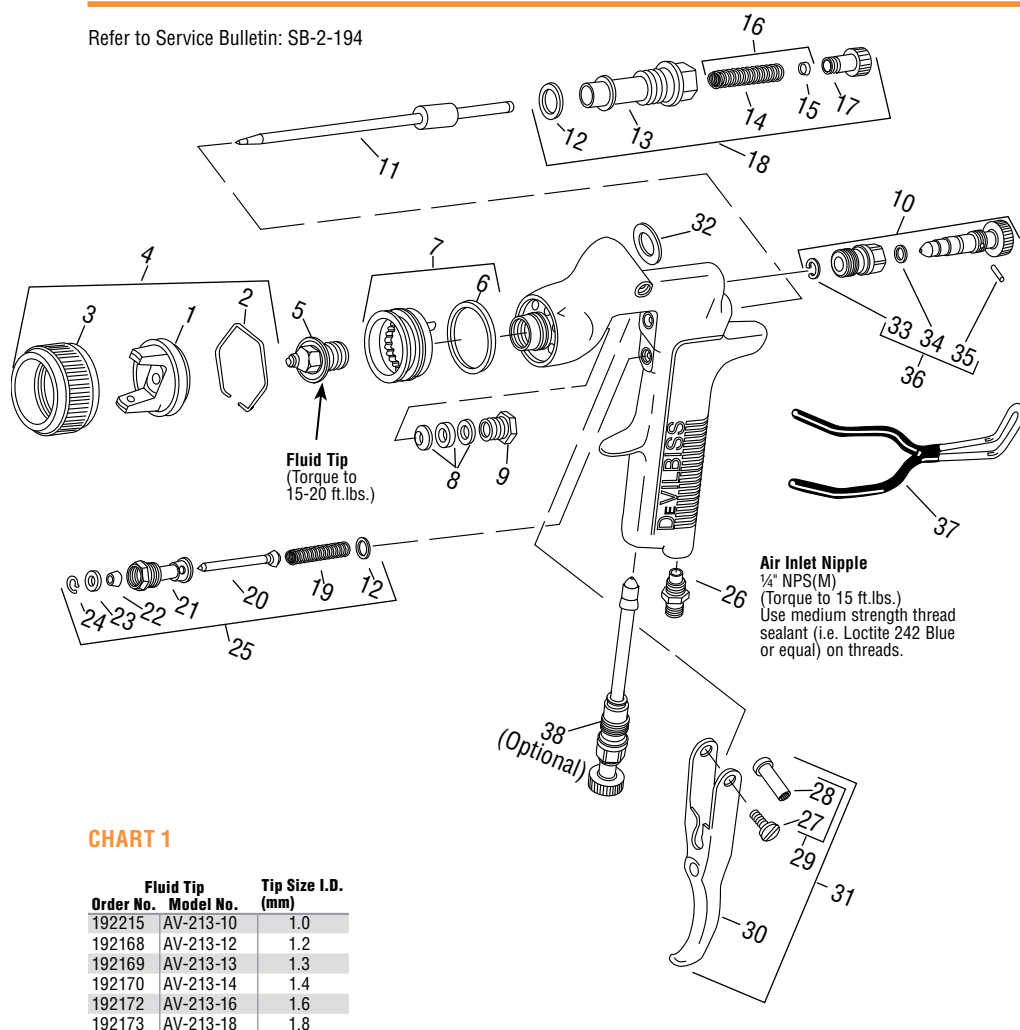


CHART 1

Order No.	Model No.	Fluid Tip	Tip Size I.D. (mm)
192215	AV-213-10	1.0	
192168	AV-213-12	1.2	
192169	AV-213-13	1.3	
192170	AV-213-14	1.4	
192172	AV-213-16	1.6	
192173	AV-213-18	1.8	

Ref. No.	Order No.	Model No.	Description	Ind. Parts Req.
1	—	—	#410 Air Cap	1
2	191972	JGA-156-K10	Spring Clip (Kit of 10)	1
3	192042	GTI-3	Air Cap Retaining Ring	1
4	192174	AV-440-410	#410 Air Cap and Retaining Ring	1
5	See Chart 1	See Chart 1	Fluid Tip	1
• 6	192179	GTI-33-K5	Baffle Seal (Kit of 5)	1
7	192178	GTI-425	Baffle Assembly	1
• 8	192109	JGA-4035-K5	Packing (Kit of 5)	1
9	190893	34411-122-K10	Packing Nut	1
10	192050	GTI-404	Spreader Valve	1
11	192054	GTI-413	Fluid Needle	1
• 12	190161	JGS-72-K10	Gasket Kit (PTFE) (Kit of 10)	2
13	—	—	Body Bushing	1
• 14	—	—	Fluid Needle Spring	1
• 15	—	—	Spring Pad	1
16	190894	MBD-19-K10	Spring and Pad (Kit of 10)	1
17	192043	GTI-414	Needle Adjusting Screw	1
18	192139	KK-5059	Bushing, Spring, Pad and Knob Kit	1
• 19	—	—	Air Valve Spring	1
• 20	—	—	Air Valve	1
21	—	—	Air Valve Body	1
• 22	—	—	U Cup Seal	1
• 23	—	—	Washer	1
• 24	—	—	Snap Ring	1
25	190780	JGS-449-1	Air Valve Assembly	1
26	190287	P-MB-51	Air Inlet Nipple 1/4" NPS(M)	1
27	—	—	Trigger Stud Screw	1
28	—	—	Trigger Stud	1
29	190889	JGS-478	Stud and Screw Kit	1
30	—	—	Trigger	1
31	191943	JGS-477-1	Trigger Stud, Screw Kit	1
• 32	192151	KGP-13-K5	Cup Gasket (Kit of 5)	1
• 33	—	—	Retaining Clip	1
• 34	—	—	Seal	1
• 35	—	—	Pin	1
36	192229	GTI-428-K5	Clip, Seal & Pin Kit (5 Each)	1
37	192219	—	Gun Holder, Coated	1
38	192228	GTI-415	Air Adjusting Valve (Optional)	1

The 192227 Spray Gun Repair Kit contains all the parts indicated with a •

# JGA® CONVENTIONAL SUCTION FEED GUN/CUP

## Includes:



- TGC 1 qt. cup

## Proven Technology and Durability

Order No.	Model No.	Type	Fluid Tip (mm)	Inlet Pressure	Application
110225	JGA-644	CNV.	1.6	35-50 PSI	Base, clear, low VOC, single stages, Urethanes
110102	JGA-636	CNV.	1.8	25-45 PSI	Synthetic and acrylic enamels. May need to restrict fluid flow with needle adjustment for base and clearcoats.

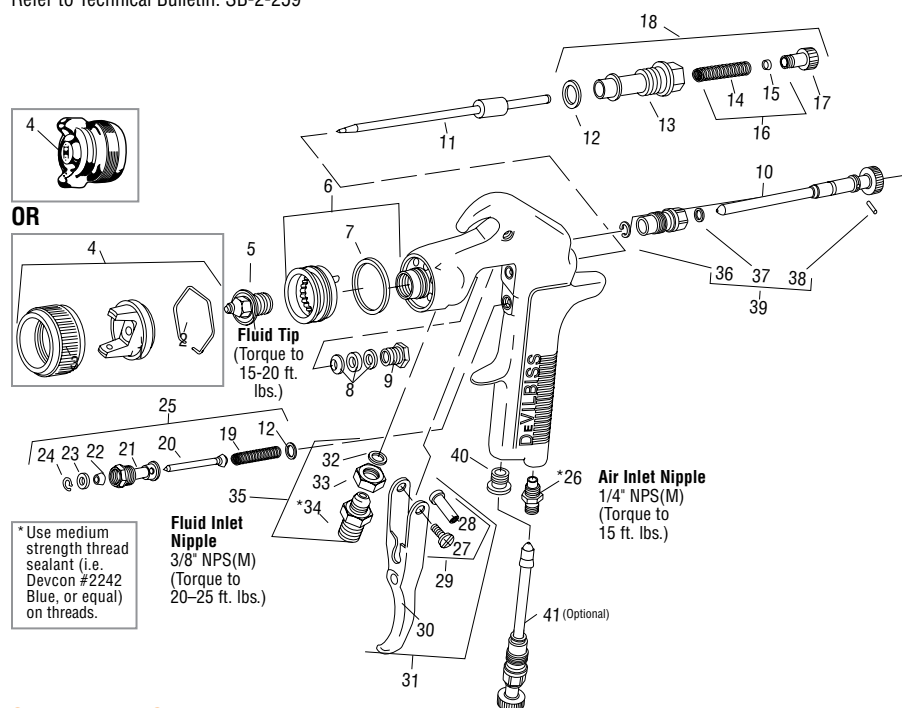
CNV. = CONVENTIONAL

## JGA® Conventional Suction Feed Air Caps

#9000 air cap	<b>Basecoats, clearcoats, single stages</b>		<b>Air Cap Pattern</b>  <b>10"</b> 
	Air Cap Order No.	<b>199000</b>	
	Air Cap Model No.	<b>AV-440-9000</b>	
	35-50 PSI inlet	9-13 CFM	
	Fluid tips	1.6mm, 1.8mm	
#80 air cap	<b>Synthetic and acrylic enamels</b>		<b>Air Cap Pattern</b>  <b>12"</b> 
	Air Cap Order No.	<b>190230</b>	
	Air Cap Model No.	<b>MB-4039-80</b>	
	25-45 PSI inlet	10-14 CFM	
	Fluid tips	1.8mm	



Refer to Technical Bulletin: SB-2-259



**CHART 1 – Air Caps, Fluid Tips, Fluid Needles & Applications**

No. on Air Cap Order No. →	Air Cap With Ring (Ref. No. 4)	Type of Fluid Delivery	Fluid Needle (Ref. No. 11)	Fluid Tips Used (Ref. No. 5)
80	190230 MB-4039-80	Suction	192054 GTI-413	AV-213-16 OR AV-213-18
9000	199000 AV-440-9000	Suction OR Pressure	192054 GTI-413	AV-213-16 OR AV-213-18

**CHART 2 – Fluid Tips**

Fluid Tip Order No.	Model No.	Tip Size I.D. (mm)	Type of Fluid Delivery
192172	AV-213-16	1.6	Suction Feed
192173	AV-213-18	1.8	Suction Feed

Ref. Order No.	Model No.	Description	Ind. Parts Req.
1	—	Air Cap	1
2	191972	JGA-156-K10	Spring Clip (Kit of 10)
3	192042	GTI-3	Air Cap Retaining Ring
4	—	See Chart 1	Air Cap & Retaining Ring
5	—	See Charts 1 & 2	Fluid Tip
6	192178	GTI-425	Baffle Assembly
•7	192179	GTI-33-K5	Baffle Seal (Kit of 5)
•8	192109	JGA-4035-K5	Packing (Kit of 5)
9	190893	34411-122-K10	Packing Nut (Kit of 10)
10	192051	GTI-405	Spreader Valve Assembly
11	—	See Chart 1	Fluid Needle
•12	190161	JGS-72-K10	Gasket (PTFE) (Kit of 10)
13	—	—	Body Bushing
•14	—	—	Fluid Needle Spring
•15	—	—	Spring Pad
16	190894	MBD-19-K10	Spring & Pad (Kit of 10)
17	192043	GTI-414	Needle Adjusting Screw
18	192139	KK-5059	Bushing, Spring, Pad & Knob Kit
•19	—	—	Air Valve Spring
•20	—	—	Air Valve
21	—	—	Air Valve Body
•22	—	—	U Cup Seal
•23	—	—	Washer
•24	—	—	Snap Ring
25	190780	JGS-449-1	Air Valve Assembly
26	190287	P-MB-51	Air Inlet Nipple 1/4" NPS(M)
27	—	—	Trigger Stud Screw
28	—	—	Trigger Stud
29	190889	JGS-478	Stud & Screw Kit (includes 3 Studs & 5 Screws)
30	—	—	Trigger
31	191943	JGS-477-1	Trigger, Stud & Screw Kit
•32	—	—	Fluid Inlet Gasket (PTFE)
33	—	—	Locknut
34	—	—	Fluid Inlet Adapter
35	190888	JGA-4042	Fluid Inlet, Gasket & Nut Kit
•36	—	—	Retaining Clip
•37	—	—	Seal
•38	—	—	Pin
39	192229	GTI-428-K5	Clip, Seal & Pin Kit (5 Each)
40	190828	JGA-132	Plug
41	192228	GTI-415	Air Adjusting Valve (Optional)

• A quantity of necessary parts is included in 192227 Repair Kit (KK-5058-2) for complete gun repair and should be kept on hand for service convenience.

**Suffixes:** -K5 designates kit of multiple parts. Example: JGA-4035-K5 is a kit of 5 packings.