

130526 THREE STAGE FILTER WITH REGULATORS

DESCRIPTION

The three stage filter unit, with two self-relieving regulators, is designed to be a point of use system. It is designed to provide clean air for a paint spray gun, breathable air unit and waterborne paint dryers. It is capable of removing dirt, water, oil, liquid aerosols, sub-micron particles, oil vapors and odors.

SPECIFICATIONS

Air Flow: 65 SCFM @ 90 PSIG

Max. Pressure: 150 PSIG

Max. Temperature: 150°F

Regulated Pressure Range: 2-125 psig

BREATHING AIR REQUIREMENTS

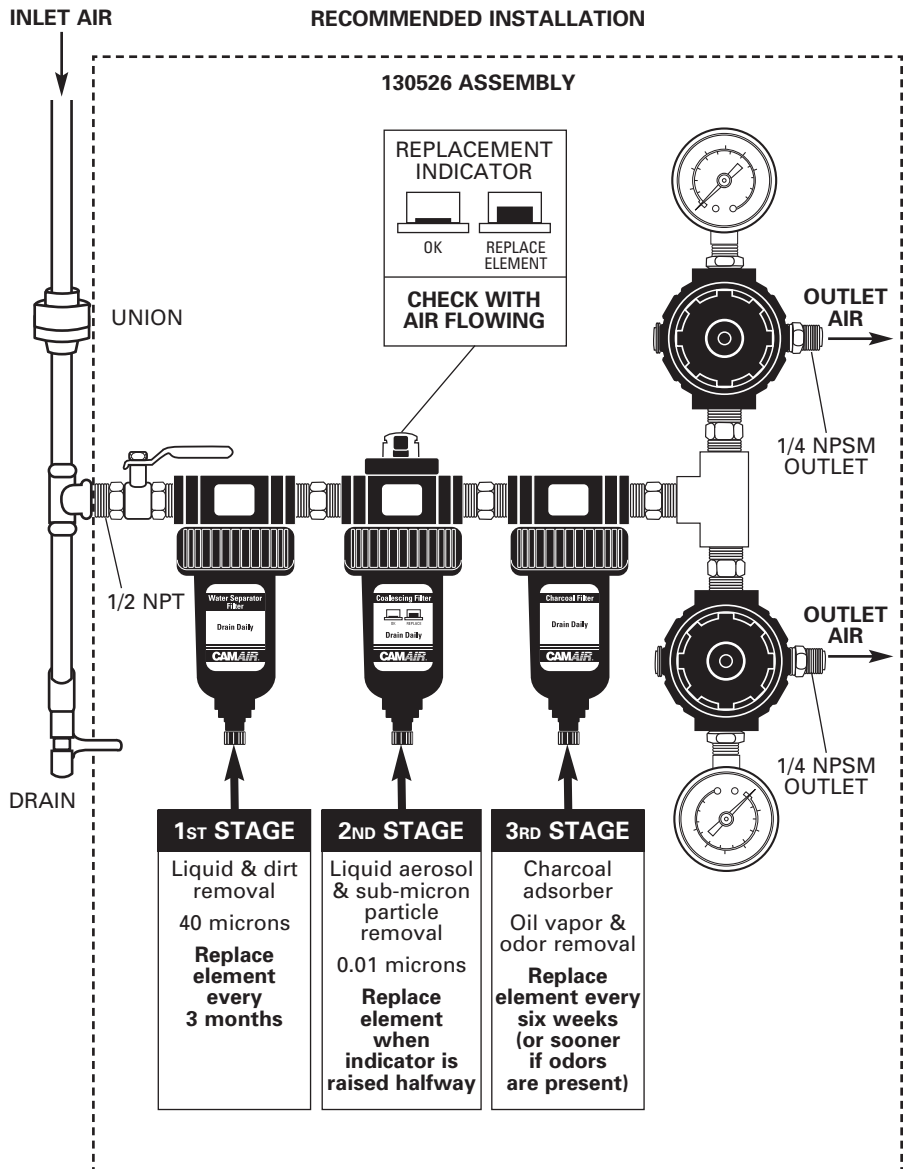
Supplied breathing air, as defined by OSHA 29 CFR 1910.134(i), NIOSH 42 CFR 84.141, and CSA CAN 3-Z180.1-00 MUST meet or exceed the following requirements for Type 1-Grade D breathable air, as defined in Compressed Gas Association (CGA-G7-1-1997):

Contaminant	OSHA	CSA
Oxygen	19.5-23.5%	20-22%
Carbon Monoxide (ppm v/v)	10	<5m L/m ³
Carbon Dioxide (ppm v/v)	1,000	500m L/m ³
Oil (Condensed Hydrocarbons) mg/m ³	5	1mg/m ³
Odor	"lack of noticable odor"	"free of any detectable odor"

Warning

Risk of illness or death. Carbon monoxide can cause nausea, fainting or death. Stop using if carbon monoxide is present. This unit does not remove carbon monoxide. A carbon monoxide monitor should be incorporated into your air supply line to warn of the presence of carbon monoxide.

It is up to the employer to assure that the air compressor is properly maintained, that the air compressor intake is located in a clean contaminate free location and that the air compressor is drawing in typical atmospheric air, meeting all of the national and local requirements for breathing air.



This filter unit does not remove or filter Carbon Monoxide (CO). It is up to the employer to ensure that the level of CO does not exceed the maximum national or local allowed level. The recommended method to assure that the CO level is not exceeded is to **install a carbon monoxide monitor and alarm.**

This filter unit will only remove particulate matter, water, oil and odor. This filter unit will meet the particulate matter, oil and odor requirements of Type 1-Grade D Breathable Air and Compressed Breathing Air, CSA-Z180.1 when:

- The filter unit is connected to a compressed air source:
 - The compressor is properly maintained

- The air compressor intake is located in a clean contaminate free location
- The air compressor is drawing in typical atmospheric air, meeting all of the national and local requirements for breathing air

- The filters are properly maintained
- A properly operating CO monitor is installed

INSTALLATION

Warning

**RISK OF PERSONAL INJURY
RISK OF PROPERTY DAMAGE**

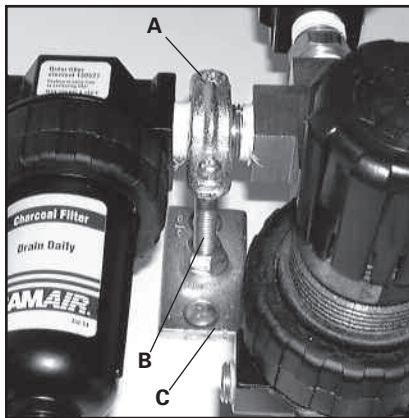
Except as otherwise specified by the manufacturer, this product is specifically designed for compressed air service and use with any other fluid (liquid or gas) is a misapplication. For example, use with or injection of certain hazardous gases in the system (such as oxygen or liquid petroleum gas) could be harmful to the unit or result in a combustible condition that may cause fire or explosion. Manufacturer's warranties are void in the event of misapplication and manufacturer assumes no responsibility for any resulting loss.

1. Install as shown on page one.
2. For an inexpensive wall bracket, purchase the following parts at your local hardware store:

- A** Split Ring Hanger, 3/4"
- B** Threaded Rod
- C** Ceiling Flange

(See Figure 1 below)

FIGURE 1



**MAINTENANCE, FILTERS
(SEE PAGE 3)**

Warning

RISK OF PERSONAL INJURY

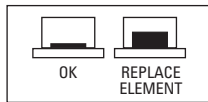
Components are under pressure. Relieve air pressure before performing any maintenance.

1ST STAGE WATER SEPARATOR FILTER

1. Daily, twist drain to remove liquid.
2. Every 3 months, replace element.

2ND STAGE COALESCING FILTER

1. Daily, twist drain to remove liquid.
2. Daily, check replacement indicator (with air flowing.)



3RD STAGE ADSORBER FILTER

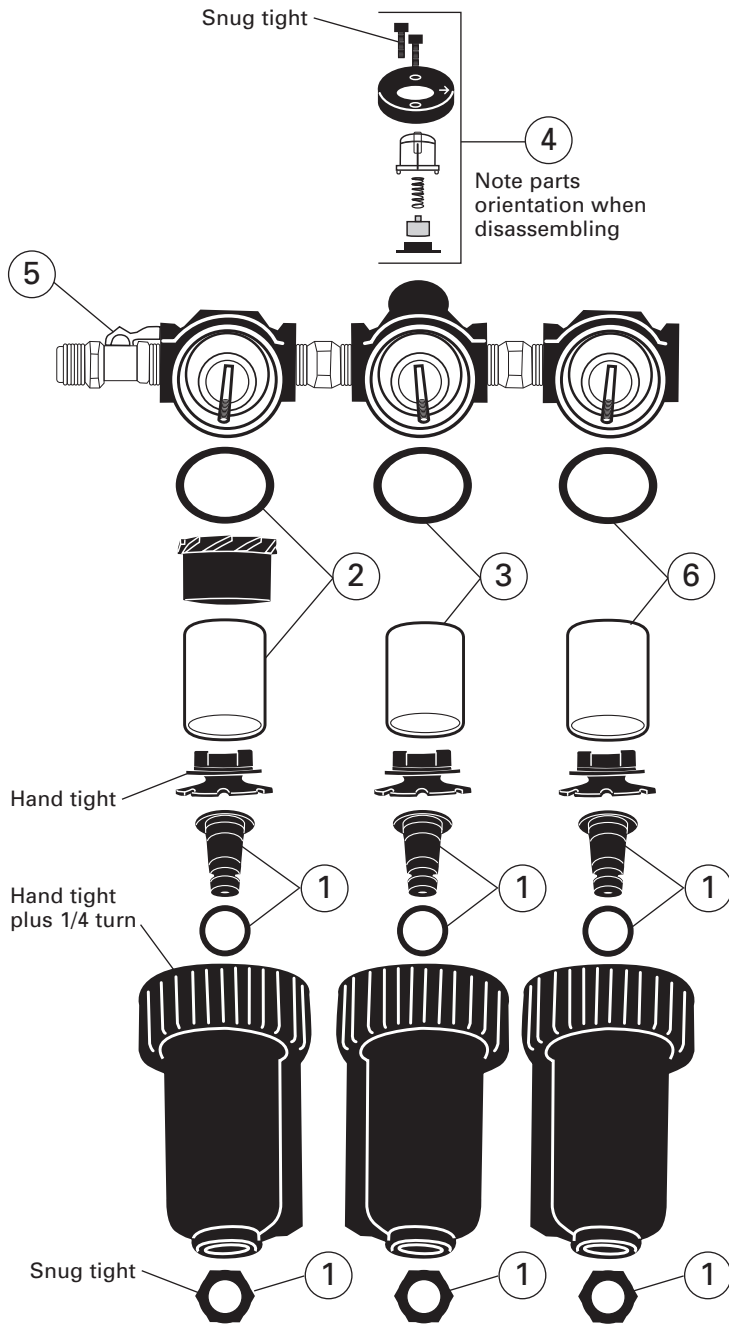
1. Daily, twist drain to remove liquid.
2. Replace charcoal element every six weeks (or sooner if odors are present.)

**MAINTENANCE, REGULATOR
(SEE PAGE 3)**

Warning

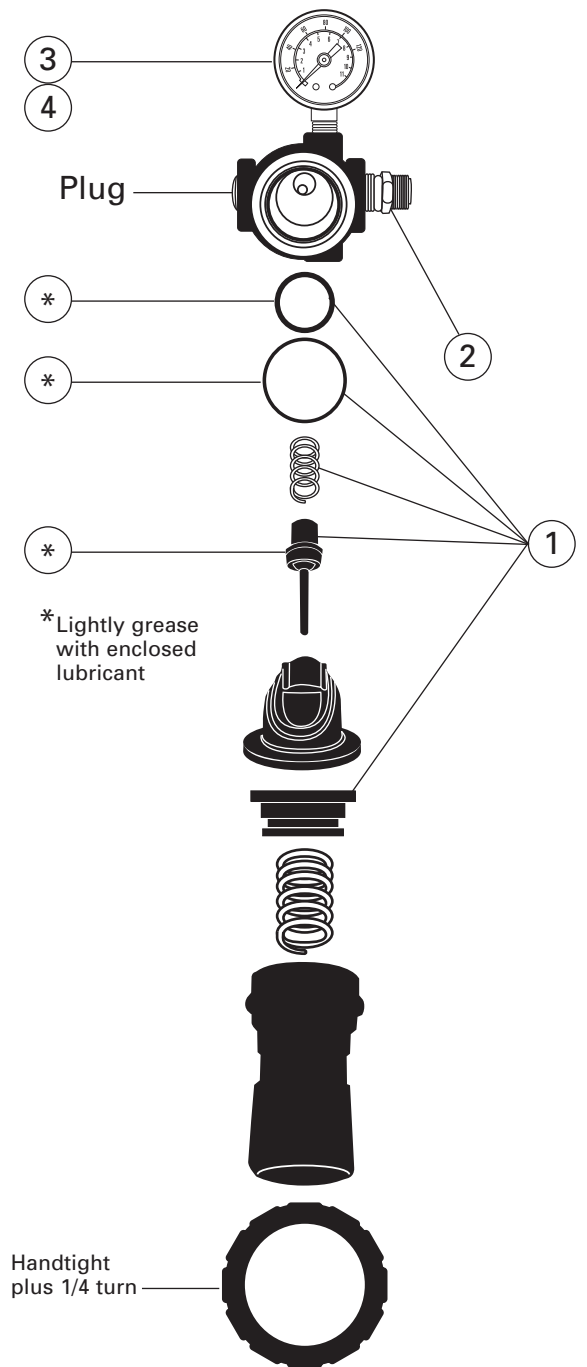
RISK OF PERSONAL INJURY

Components are under pressure. Relieve air pressure before performing any maintenance. Rotate regulator knob fully counter-clockwise to relieve regulator spring pressure.



PARTS LIST

Ref. No.	Replacement Part No.	Description
1	130519	Drain Kit (one set)
2	130517	Filter Element, Water
3	130518	Filter Element, Coalescing
4	130520	Indicator Kit, Coalescing
5	VA-595	Shut-off Valve
6	130527	Filter Element, Charcoal



PARTS LIST

Ref. No.	Replacement Part No.	Description
1	130521	Regulator Kit
2	H-2008	Adapter
3	GA-288	Gauge
4	GA-375	Gauge, Upside Down