

Repair Kit KK-5007

▪ TLC-555 & TGC-545 DRIP FREE SUCTION CUPS

Important: Before using this equipment, read all safety precautions and instructions. Keep for future use.

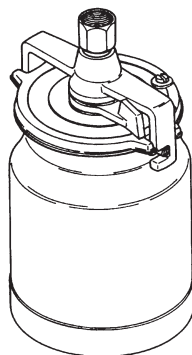


Figure 1

DESCRIPTION

Models: ■ TLC-555 – One quart capacity,
Non-stick coating lined cup
TGC-545 – One quart capacity

These drip free suction cups have a unique, two position valve which permits selection of either a drip free spraying mode or a conventional open vent mode.

In the drip free position, air is directed through the vent in the lid to a channel beneath the lid gasket before entering the cup at the valve. This allows the cup to be tilted when full without dripping paint through the vent. The cup can also be inverted while spraying without leaking.

The open position isolates the channel and opens a direct vent into the cup.

The position of the valve is indicated by alignment of the hole in the valve slot with the marks cast on the lid. These positions are identified as "O" for vent open and "D/F" for Drip Free.

Note

Non-stick Coating Lined Cup - Only use a wooden or plastic paddle or mixer for mixing material in the cup (7). A metal paddle or mixer can scratch the non-stick coating.

■ Government NSN # 4940-01-208-8876 = TLC-555

Note

For Non-stick Coating Lined Paint Cups, variation in the color of the non-stick coating is normal. This variation is the result of the normal production process used with this type of coating. We have selected this particular grade of non-stick coating because it provides **the best** overall performance and **maximum durability** possible.

OPERATION

Open Vent Mode "O"- To operate in the open vent mode, rotate the valve with a screwdriver or coin so that the hole in the valve slot is aligned with the "O" on the lid. See Figure 2.

If the valve slot hole should plug while operating in the "O" vent mode, use a pointed tool such as a nail or drill bit to probe through the valve slot hole to clear away the obstruction.

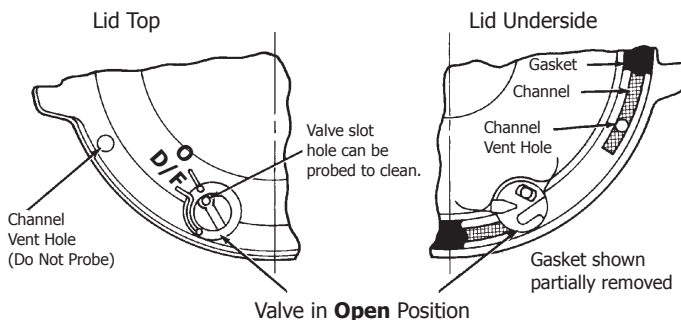


Figure 2 – Open Vent Mode

Drip Free Mode "D/F" – To operate in the drip free mode, rotate the valve with a screwdriver or coin so that the hole in the valve slot is aligned with the "D/F" on the lid. See Fig. 3

CAUTION

Do not probe through the channel vent hole at any time. Do not probe through the valve slot hole while the valve is in the "D/F" position. These holes are sealed by a gasket and gasket damage could result. See Figs. 2 & 3.

IMPORTANT! DO NOT DESTROY

It is the Customer's responsibility to have all operators and service personnel read and understand this manual. Contact your local DeVilbiss representative for additional copies of this manual.

READ ALL INSTRUCTIONS BEFORE OPERATING THIS DEVILBISS PRODUCT.

SAFETY PRECAUTIONS

This manual contains important information that ALL users should know and understand BEFORE using the equipment. This information relates to USER SAFETY and PREVENTING EQUIPMENT PROBLEMS. To help you recognize this information, we use the following terms to draw your attention to certain equipment labels and portions of this manual. Pay special attention to any label or information that is highlighted by one of these terms:

WARNING

Important information to alert you to a situation that might cause injury or loss of life.

CAUTION





Important information that tells how to prevent damage to equipment

Note

Information that you should pay special attention to.

WARNING

The following hazards may occur during the normal use of this equipment. Please read the following chart.

HAZARD	CAUSE	SAFEGUARDS
Fire 	Solvents and coatings can be highly flammable or combustible, especially when sprayed.	Do not spray near open flames, pilot lights in stoves or heaters, or other heat sources. Adequate ventilation must always be provided. Industrial applications must comply with OSHA requirements.
Solvent Spray 	During cleaning and flushing, solvents can be forcefully expelled from fluid and air passages. Some solvents can cause eye injury or irritation.	Wear eye protection.
Explosion Hazard - Incompatible Materials 	Chlorinated solvents, such as 1, 1, 1 - Trichloroethane and Methylene Chloride (sometimes called methyl chloride) can chemically react with the aluminum used in most spray equipment, and these cups, to produce an explosion hazard. The TLC-555, TGC-545 and TGC-536 are aluminum.	<ol style="list-style-type: none"> 1. Read the label or data sheet for the material you intend to spray. 2. Do not use any type of spray coating material containing these solvents. 3. Do not use these solvents for equipment cleaning or flushing. 4. If in doubt as to whether a material is compatible, contact your material supplier.
Inhaling Toxic Substances 	Certain materials may be harmful if inhaled, or if there is contact with the skin.	Follow the requirements of the Safety Data Sheet supplied by your coating material manufacturer. Adequate exhaust must be provided to keep the air free of accumulations of toxic materials. Use a mask or respirator whenever there is a chance of inhaling sprayed materials. The mask must be compatible with the material being sprayed and its concentration. Equipment must be as prescribed by an industrial hygienist or safety expert, and be NIOSH approved.



PROP 65 WARNING

WARNING: This product contains chemicals known to the State of California to cause cancer and birth defects or other reproductive harm.

Valve Movement – Do not forcibly rotate the valve. If it will not move freely, soak in solvent or remove the lid assembly from the cup and press down on the top of the valve until it breaks free. The valve has free travel vertically of about 1/8". This can be used to push out the gasket.

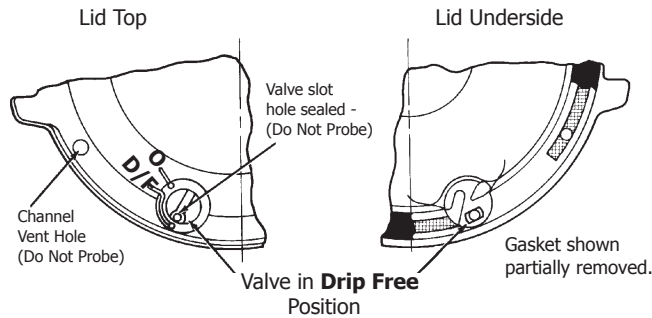


Figure 3 - Drip Free Model

INSTALLATION

1. Position yoke at right angle to gun body with vent hole in lid toward rear and lever of cam (3) toward front of gun.
2. Fasten cup lid assembly to gun by attaching nut (2), see Fig. 4, to fluid inlet nipple on gun. Tighten nut with wrench only until snug.
3. Strain material to be sprayed through a 60-90 mesh screen before pouring into cup.
4. Engage pins on cup into yoke and tighten yoke by moving lever of cam clockwise.

MAINTENANCE

Lid Repair/Replacement:

1. To replace a damaged part, use a 5/16" hex wrench to loosen and remove adapter (1), nut (2), yoke & cam (3). Lid and tube assembly are now loose for replacement.
2. Replace damaged parts on the lid and tube assembly. The cam lever should be located on opposite side of lid from valve (4).
3. Apply sealant (Loctite #262) to the first two full threads of adapter (1). Insert threaded end of adapter into open end of nut (2).
4. Install adapter (1) and nut (2) in top of lid and tube assembly. Use a 5/16" hex wrench to tighten firmly (10-12 foot pounds).

Valve and Lid Gasket Replacement:

1. To remove a damaged valve (4) or lid gasket (5), press on top of valve until it breaks free. The valve pushes the lid gasket from the seat. The lid gasket may now be removed from the lid. Continue pressing hard on the valve to remove it from the lid.
2. Install replacement valve (4) through bottom of lid so that the valve tab is toward center of lid. Snap in place. If necessary, use a plastic mallet or screwdriver handle to tap the valve in place. Press the lid gasket firmly in the lid using the end of a crescent wrench. Insert the side with the black marks first.

CLEANING

Note

Always clean the cam lever (3) surfaces with clean solvent and a brush. This will keep the cam lever functioning properly. Do not lubricate the cam.

General: For routine cleaning, it is not necessary to remove the lid gasket. It is not necessary or desirable to remove the valve for any cleaning procedure. The valve can be depressed from the outside to assist in removal of the gasket for gasket replacement or when cleaning dried paint from the channel. The valve should not be forced past the shoulder which retains it in the lid except for replacement.

Air Pressure: Always clean with reduced air pressure. An air pressure no greater than 15 to 20 psi will allow quick and thorough cleaning of the cup and gun and at the same time will:

1. Minimize the amount of solvent atomized into the air.
2. Prevent possibility of damage to cup from excessive back pressure.
3. Reduce the force with which solvent is expelled from the vent.

Cleaning Procedures:

1. Empty paint from cup and add small amount of clean solvent. The amount required will vary with different coatings and solvents.
2. Shake cup to wash down inside surfaces. Then spray solvent at low air pressure (15-20 psi) to flush out fluid passages.
3. Pour out solvent and add same amount of clean solvent.
- 4a. Again, shake cup. Loosen air cap. Hold a folded cloth over front of gun and invert cup over solvent receptacle. Trigger with short bursts to back flush vent channel. With valve in **D/F** position, solvent will be expelled with force from the channel vent hole in lid.

Alternative to Step 4a.

- 4b. Shut off air to gun. With valve in **D/F** position, invert cup over solvent receptacle. Trigger gun. Allow solvent to drip out channel vent hole in lid for several seconds, or until clean solvent is seen.

CAUTION

• **Do not probe through the channel vent hole at any time. Do not probe through the valve slot hole while the valve is in the D/F position. These holes are sealed by gasket (5) and gasket damage could occur.**

• **Do not use abrasives such as a wire brush or steel wool to clean the inside of the non-stick coating lined cup (7). Damage to the non-stick surface could result.**

IMMERSION

Since all materials in the cup are highly solvent resistant, the cup assembly may be immersed for cleaning. Immersion should not exceed 24 hours. The use of paint strippers should be avoided because strippers will affect the aluminum as well as other non-metallic components. If the lid gasket has become swollen from prolonged exposure to solvents, it will return to its original size without loss of properties when allowed to dry.

Parts List

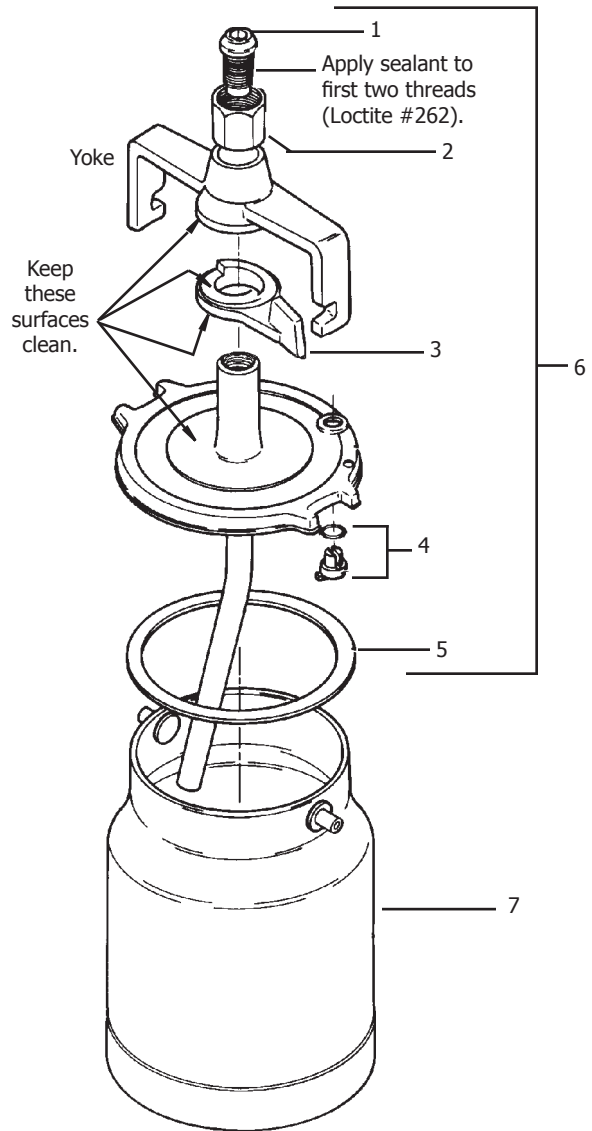
Ref. No.	Replacement Part No.	Description	Ind. Parts Req.
1*		Adapter, 1/2" NPS (M)	1
2*		Nut, 3/8" NPS (F)	1
3*		Cam	1
4*	TGC-407-1-K3	Drip Free Valve & Gasket (Kit of 3)	1
5*	TGC-9-K5	**Tri Seal® Lid Gasket (Kit of 5)	1
6	TGC-404	Lid Assembly (Quart)	1
7	KR-428-2	Suction Cup Assy. (Quart)	1
	TLC-401	Suction Cup Assy. (Non-stick, Quart)	1

* KK-5007 Repair Kit includes Ref. Nos. 1-5. Repair kit contains enough parts to repair one complete assembly.

Suffix -K3 designates a kit of multiple parts. Example: TGC-407-1-K3 is a kit of 3 drip free valves.

** Registered Trademark of Tri-Seal International.

Figure 4



NOTES

WARRANTY POLICY

DeVilbiss products are covered by Carlisle Fluid Technologies one year materials and workmanship limited warranty. The use of any parts or accessories, from a source other than Carlisle Fluid Technologies, will void all warranties. For specific warranty information please contact the closest Carlisle Fluid Technologies location listed below.

Carlisle Fluid Technologies reserves the right to modify equipment specifications without prior notice. DeVilbiss®, Ransburg®, ms®, BGK®, and Binks® are registered trademarks of Carlisle Fluid Technologies, Inc.

©2017 Carlisle Fluid Technologies, Inc.
All rights reserved.

DeVilbiss is part of Carlisle Fluid Technologies, a global leader in innovative finishing technologies. For technical assistance or to locate an authorized distributor, contact one of our international sales and customer support locations.

USA/Canada

info@carlisleleft.com
Tel: 1-888-992-4657
Fax: 1-888-246-5732

China

mkt@carlisleleft.com.cn
Tel: +8621-3373 0108
Fax: +8621-3373 0308

Germany

info@carlisleleft.eu
Tel: +49 (0) 6074 403 1
Fax: +49 (0) 6074 403 281

United Kingdom

info@carlisleleft.eu
Tel: +44 (0)1202 571 111
Fax: +44 (0)1202 573 488

Mexico

ventas@carlisleleft.com.mx
Tel: +52 55 5321 2300
Fax: +52 55 5310 4790

Australia

sales@carlisleleft.com.au
Tel: +61 (0) 2 8525 7555
Fax: +61 (0) 2 8525 7575

Japan

overseas-sales@carlisleleft.co.jp
Tel: +81 45 785 6421
Fax: +81 45 785 6517

For the latest information about our products, visit www.carlisleleft.com.



DeVilbiss Automotive Refinishing is part of Carlisle Fluid Technologies, a global leader in innovative finishing technologies. For technical assistance or to locate an authorized distributor, contact one of our international sales and customer support locations.

USA/Canada

www.autorefinishdevilbiss.com
askus@carlisleleft.com
Toll Free Tel: 1-800-445-3988
Toll Free Fax: 1-800-445-6643

Mexico

www.autorefinishdevilbiss.com.mx
Toll Free Tel: 1-888-835-6232 USA