



# 1/4" Drive Impact Socket Set



1/4"

6s

No. 9772

1/4" Drive Master Set



This set contains the most popular sockets in our 1/4" surface drive line, plus 3 extensions, universal joint, 1/4" to 3/8" adapter and 1/4" Hex to 1/4" Square Adapter. Packaged in an all new compact, low profile molded storage case. This set is great for use on impact wrenches, air ratchets as well as hand ratchets.



### 72 piece set contents:

#### 10 Pieces Standard Length:

3/16", 7/32", 1/4", 9/32", 5/16", 11/32", 3/8", 7/16", 1/2", 9/16"

#### 10 Pieces Deep Length:

3/16", 7/32", 1/4", 9/32", 5/16", 11/32", 3/8", 7/16", 1/2", 9/16"

#### 14 Pieces Metric Standard Length:

4mm, 4.5mm, 5mm, 5.5mm, 6mm, 7mm, 8mm, 9mm, 10mm, 11mm, 12mm, 13mm, 14mm, 15mm

#### 14 Pieces Metric Deep Length:

4mm, 4.5mm, 5mm, 5.5mm, 6mm, 7mm, 8mm, 9mm, 10mm, 11mm, 12mm, 13mm, 14mm, 15mm

#### 6 Pieces Standard Universal:

1/4", 5/16", 3/8", 7/16", 1/2", 9/16"

#### 12 Pieces Metric Standard Universal:

5mm, 5.5mm, 6mm, 7mm, 8mm, 9mm, 10mm, 11mm, 12mm, 13mm, 14mm, 15mm

#### 1 Piece Each:

2", 4", & 6" Extensions  
1/4" Universal Joint  
1/4" F. x 3/8" M. Adapter  
1/4" Hex x 1/4" Square Adapter

Molded Storage Case



# #5 Spline Drive Impact Sockets



## 6 No. 9260 #5 Spline Drive Truck Wheel Set SAE MM

A special #5 spline drive set designed for servicing truck wheels. It contains a 13/16" square size for the budd wheel inner cap nuts, a 1-1/2" outer budd nut size that has a "controlled depth" hex end to help prevent contact with the wheel, a 33mm size for 10 hole hub piloted wheels, three (3) deep thin wall sizes, and other regular length impact sockets.



### 10 piece set contents:

- |                                  |                                |
|----------------------------------|--------------------------------|
| 5313S . . . . . 13/16" Square    | 5034DT . . . 1-1/16" T.W. Deep |
| 5028R . . . . . 7/8" Standard    | 5036DT . . . 1-1/8" T.W. Deep  |
| 5030R . . . . . 15/16" Standard  | 5040DT . . . 1-1/4" T.W. Deep  |
| 5032R . . . . . 1" Standard      | 5048DB . . . 1-1/2" Deep Budd  |
| 5038R . . . . . 1-3/16" Standard | Metal Storage Case             |
| 5033M . . . . . 33mm Standard    |                                |

## 6 No. 9263 #5 Spline Drive Truck Wheel Fractional & Metric Socket Set SAE MM

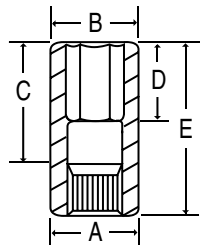
Ten (10) of the most popular fractional and metric impact socket sizes for truck wheel fasteners.



### 10 piece set contents:

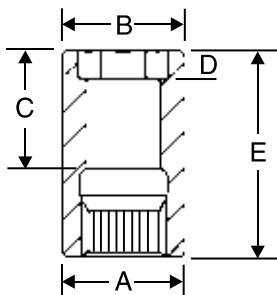
- |                                |                             |
|--------------------------------|-----------------------------|
| 5034DT . . . 1-1/16" T.W. Deep | 5041MDT . . 41mm Deep T.W.  |
| 5036DT . . . 1-1/8" T.W. Deep  | 5313S . . . . 13/16" Square |
| 5040DT . . . 1-1/4" T.W. Deep  | 5317S . . . . 17mm Square   |
| 5048DB . . . 1-1/2" Deep Budd  | 5321S . . . . 21mm Square   |
| 5033MD . . . . . 33mm Deep     | Metal Storage Case          |
| 5035MDT . . . 35mm Deep T.W.   |                             |

## 6 #5 Spline Drive Deep Sockets SAE MM



Item Number	Hex Size	Dimensions (Inches/Millimeters)				
		A	B	C	D	E
<b>5033MD</b>	<b>33mm</b>	55	55	78	54	108
<b>5036MD</b>	<b>36mm</b>	57	57	78	54	108
<b>5046D</b>	<b>1-7/16"</b>	2.36	2.36	3.07	1.02	4.25
<b>5048DS</b>	<b>1-1/2"</b>	2.36	2.36	2.87	1.97	4.06
<b>5052D</b>	<b>1-5/8"</b>	2.28	2.48	3.15	1.57	4.33
<b>5056D</b>	<b>1-3/4"</b>	2.36	2.68	4.13	2.17	5.31

## 6 #5 Spline Drive Budd Wheel Socket - 1-1/2" Limited Hex SAE



Special 1-1/2" hex deep heavy duty impact socket designed for outer cap nuts on budd-style truck wheels. The 1-1/2" hex depth is limited to help prevent socket contact with the wheel. The socket is deep style to eliminate contact with the inner cap nut.

Item Number	Hex Size	Dimensions (Inches)				
		A	B	C	D	E
<b>5048DB</b>	<b>1-1/2"</b>	2.36	2.36	2.83	.55	4.02