



*Impact Sockets,
Chisels & Attachments*

EVERYTHING IMPACT.®





GP is **EVERYTHING IMPACT**®

Grey Pneumatic (GP) through our distributors supplies the world's automotive, industrial, assembly, mining, maintenance, construction, and energy industries with heavy duty, high quality impact and specialty sockets. We carry a complete line of Impact Socket sets and individuals from 1/4" drive thru 2-1/2" and #5 spline drive with hex sizes up to 8". We also offer a large selection of star impact drivers, impact hex drivers, triple square drivers, torque limiting extensions plus Impact chisels and accessories.

GP sockets and tools are made in Taiwan using the highest quality chrome-molybdenum alloy steel and state-of-the-art manufacturing processes and equipment. Thorough and exact heat treatment, as well as rigid quality control, ensures the correct balance of strength and durability to deliver outstanding performance at the most competitive cost.

GP Tools are available through Automotive and Industrial warehouse distributors, tool stores, mobile tool truck dealers, tire equipment and supply warehouses and other sources that service these markets.

GP offers **Fast and Reliable** service to all of our distributors and their customers.



*GP Tools carry a
Lifetime Warranty.*

All GP Impact Sockets feature the GP "High Torque" Drive

Benefits are:

Increased Strength - Transfers the pressure from the thinnest part of the socket wall toward the thicker section, resulting in increased strength.

Increased Torque - Allows up to 20% more torque to be applied than on standard hex impact sockets.

Easier Access to Tight Areas - The shift in pressure allows us to reduce the socket wall thickness, increasing access to tight areas.

Reduced Wear - Our impact sockets grip the fastener across a broader contact area, reducing the chance of rounding off fasteners.



*GP "High Torque"
drive offers many
benefits.*



*All GP Sockets feature
extra-large size markings
for quick identification.*

EVERYTHING IMPACT®

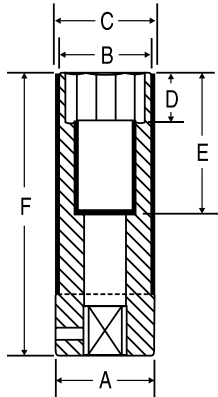


1/2" Drive Wheel/Nut Protector Impact Sockets



6 1/2" Drive Extra-Thin Wall Wheel/Nut Protector Sockets SAE MM

These unique extra-thin wall impact sockets are for use on alloy wheels with decorative lug nuts. They feature protective (color-coded) plastic sleeves and internal plastic inserts to prevent damage to expensive alloy wheels and decorative lug nuts. They should be used only on passenger and light truck wheel nuts. USE ONLY WITH 1/2" DRIVE AIR TOOLS. DO NOT USE REDUCING ADAPTERS. Available individually or in Sets below.



Item Number	Hex Size	Sleeve Color	Dimensions (Inches)					
			A	B	C	D	E	F
Fractional Sizes								
*2024TP	3/4"	Yellow	1.10	1.02	1.10	.71	1.75	3.15
*2026TP	13/16"	Dark Green	1.18	1.10	1.18	.91	1.75	3.15
*2028TP	7/8"	Purple	1.26	1.18	1.26	.91	1.75	3.15
*2030TP	15/16"	Tan	1.34	1.26	1.26	.91	1.75	3.07
*2032TP	1"	Light Blue	1.42	1.34	1.34	.91	1.75	3.07
*2034TP	1-1/16"	Light Green	1.50	1.42	1.42	.91	1.75	3.07
Metric Sizes								
*2017MTP	17mm	Red	1.02	.95	1.02	.63	1.75	3.15
*2019MTP	19mm	Dark Blue	1.10	1.02	1.10	.71	1.75	3.15
*2021MTP	21mm	Gray	1.18	1.10	1.18	.91	1.75	3.15
*2022MTP	22mm	Orange	1.26	1.16	1.24	.91	1.75	3.15
*2023MTP	23mm	Brown	1.26	1.20	1.28	.91	1.75	3.15

*Extra-Thin Wall Impact Sockets are not covered by the GP Warranty.

6 No. 1511TP* 1/2" Drive Extra-Thin Wall Wheel/Nut Protector Socket Set SAE MM



11 piece set contents: (All Impact Sockets listed above)

2024TP 3/4"	2017MTP 17mm
2026TP 13/16"	2019MTP 19mm
2028TP 7/8"	2021MTP 21mm
2030TP 15/16"	2022MTP 22mm
2032TP 1"	2023MTP 23mm
2034TP 1-1/16"		Molded Storage Case

*Extra-Thin Wall Impact Sockets are not covered by GP Warranty.

6 No. 1505TP* 1/2" Drive Extra-Thin Wall Wheel/Nut Protector Socket Set SAE



Set includes five (5) of the most popular fractional sizes listed above:

5 piece set contents:

3/4", 13/16", 7/8", 1" & 1-1/16"
Molded Storage Case

*Extra-Thin Wall Impact Sockets are not covered by GP Warranty.

6 No. 1503TP* 1/2" Drive Extra-Thin Wall Wheel/Nut Protector Socket Set MM



Set includes three (3) of the most popular metric sizes listed above:

3 piece set contents:

17mm, 19mm, 21mm
Molded Storage Case

*Extra-Thin Wall Impact Sockets are not covered by GP Warranty.