



*Impact Sockets,  
Chisels & Attachments*

**EVERYTHING IMPACT.®**





# GP is **EVERYTHING IMPACT**®

Grey Pneumatic (GP) through our distributors supplies the world's automotive, industrial, assembly, mining, maintenance, construction, and energy industries with heavy duty, high quality impact and specialty sockets. We carry a complete line of Impact Socket sets and individuals from 1/4" drive thru 2-1/2" and #5 spline drive with hex sizes up to 8". We also offer a large selection of star impact drivers, impact hex drivers, triple square drivers, torque limiting extensions plus Impact chisels and accessories.

GP sockets and tools are made in Taiwan using the highest quality chrome-molybdenum alloy steel and state-of-the-art manufacturing processes and equipment. Thorough and exact heat treatment, as well as rigid quality control, ensures the correct balance of strength and durability to deliver outstanding performance at the most competitive cost.

GP Tools are available through Automotive and Industrial warehouse distributors, tool stores, mobile tool truck dealers, tire equipment and supply warehouses and other sources that service these markets.

GP offers **Fast and Reliable** service to all of our distributors and their customers.



*GP Tools carry a  
Lifetime Warranty.*

## **All GP Impact Sockets feature the GP "High Torque" Drive**

### **Benefits are:**

**Increased Strength** - Transfers the pressure from the thinnest part of the socket wall toward the thicker section, resulting in increased strength.

**Increased Torque** - Allows up to 20% more torque to be applied than on standard hex impact sockets.

**Easier Access to Tight Areas** - The shift in pressure allows us to reduce the socket wall thickness, increasing access to tight areas.

**Reduced Wear** - Our impact sockets grip the fastener across a broader contact area, reducing the chance of rounding off fasteners.



*GP "High Torque"  
drive offers many  
benefits.*



*All GP Sockets feature  
extra-large size markings  
for quick identification.*

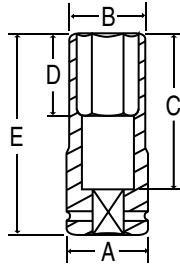
**EVERYTHING IMPACT**®



# 3/4" Drive Special Application Impact Sockets



## 6 3/4" Drive Extra-Deep Thin Wall Sockets SAE MM

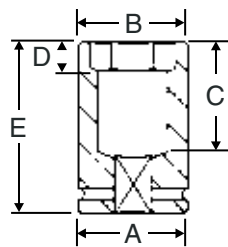


Designed for truck wheel service when removing lug nuts that are deeply recessed and where space is very limited.

| Item Number    | Hex Size       | Dimensions (Inches/Millimeters) |      |      |      |      |
|----------------|----------------|---------------------------------|------|------|------|------|
|                |                | A                               | B    | C    | D    | E    |
| <b>3034DT</b>  | <b>1-1/16"</b> | 1.69                            | 1.57 | 3.27 | 1.69 | 4.25 |
| <b>3036DT</b>  | <b>1-1/8"</b>  | 1.69                            | 1.65 | 3.27 | 1.69 | 4.25 |
| <b>3040DT</b>  | <b>1-1/4"</b>  | 1.77                            | 1.77 | 3.27 | 1.69 | 4.25 |
| <b>3041MDT</b> | <b>41mm</b>    | 45                              | 54.5 | 83   | 43   | 108  |

3/4"

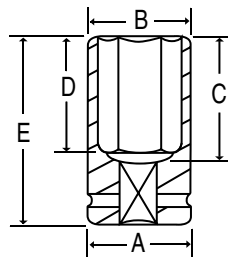
## 6 3/4" Drive Budd Wheel Socket - 1-1/2" Limited Hex SAE



Special 1-1/2" hex deep heavy duty impact socket designed for outer cap nuts on budd-style truck wheels. The 1-1/2" hex depth is limited to help prevent socket contact with the wheel. The socket is deep style to eliminate contact with the inner cap nut.

| Item Number   | Hex Size      | Dimensions (Inches) |      |      |     |      |
|---------------|---------------|---------------------|------|------|-----|------|
|               |               | A                   | B    | C    | D   | E    |
| <b>3048DB</b> | <b>1-1/2"</b> | 2.24                | 2.24 | 2.83 | .55 | 3.82 |

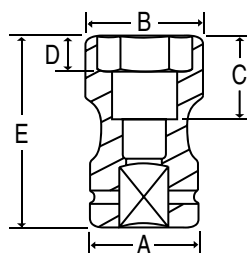
## 6 3/4" Drive Budd Wheel Socket - 1-1/2" Deep Hex SAE



Special 1-1/2" hex deep heavy duty impact socket designed for outer cap nuts on budd-style truck wheels. The 1-1/2" hex depth is deep in length. The socket is a deep style to eliminate contact with the inner cap nut.

| Item Number   | Hex Size      | Dimensions (Inches) |      |      |      |      |
|---------------|---------------|---------------------|------|------|------|------|
|               |               | A                   | B    | C    | D    | E    |
| <b>3048DS</b> | <b>1-1/2"</b> | 2.36                | 2.36 | 3.03 | 2.70 | 4.02 |

## 6 3/4" Drive Combination Budd Wheel Sockets SAE MM



Removes and installs budd-type wheel fasteners. Sockets have two openings, eliminating the need for two separate sockets. Fractional and metric sizes.

| Item Number   | Hex Size      | Square Size   | Dimensions (Inches/Millimeters) |      |      |     |      |
|---------------|---------------|---------------|---------------------------------|------|------|-----|------|
|               |               |               | A                               | B    | C    | D   | E    |
| <b>3223C</b>  | <b>1-1/2"</b> | <b>13/16"</b> | 2.24                            | 2.24 | 2.83 | .55 | 3.82 |
| <b>3235MC</b> | <b>35mm</b>   | <b>17mm</b>   | 52                              | 54   | 65   | 13  | 90   |
| <b>3241MC</b> | <b>41mm</b>   | <b>21mm</b>   | 54                              | 58   | 83   | 14  | 97   |