

36700 Two"-One S-Cam Brake Tool

The 2"-1 S-Cam Brake Tool offers technicians a more efficient method for changing brake shoes on an S-Cam drum brake assembly. The tool is comprised of a steel shaft with a U-shaped fork on one end to stretch the retaining spring so that both halves of the brake shoes are held together, which enables the user to hook up the pin. An S-shaped device on the opposite end enables the user to position the brake shoes in a way that allows leverage for installation of the rollers. The hooked end pulls the brake shoes apart so that the rollers can be installed faster and more safely.



364 Toyota Brake Spring Tool

- Special tip is designed to engage the shoe hold down spring cup on Toyota vehicles.
- This application requires a lower profile brake spring tool with more a longer reach. The user can put the tip of this tool through the access hole and engage the spring cup on 2000 and current Tacoma, Tundra, FJ Cruiser, 4Runner, Land Cruiser, and Camry.



700 Universal Brake Pad Spreader

- Allows installer to easily compress both pistons at once and facilitates both single and dual piston applications.
- Usage for Ford F150 & F250, Ford & GM front wheel drive vehicles.



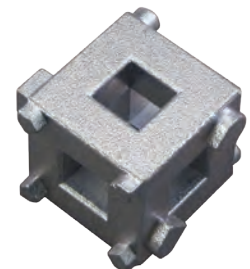
702 Disc Brake Pad Spreader

- Facilitates the quick and easy changing of disc brake pads.
- Spreader will compress inner pad and reset piston for easy pad replacement.
- Heavy duty construction.



722 Disc Brake Piston Remover

- Rotates the parking brake activated piston back into caliper cylinder when replacing worn pads.
- Used on most import, Ford, Chrysler and some GM vehicles equipped with four wheel disc brakes.
- Use with 3/8" drive.



727 Universal Caliper Turn & Push-Back Tool

Compresses any size brake caliper, from motorcycles, standard size cars, trucks and SUVs, and even 18 wheelers. A 3/8" ratchet can be inserted on the end of the tool for ease of use. Can also perform front brake jobs by flipping the head around.

