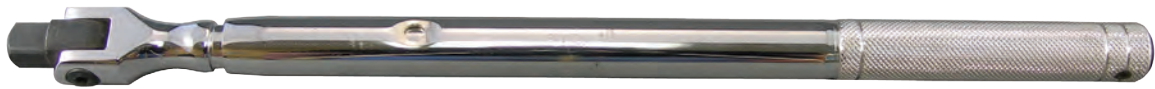


480 1/2" Breaker Bar

- Extends from 15" to 24"
- Excellent for mobile technicians, allowing them to fit the bar in regular carry tool boxes.
- Has two buttons to lock the bar in three different positions.
- Tested in Independent lab to destruction of 6800 inch pounds. Some tested as high as 8000 pounds.
- Patented.



482 90 Degree Gearless Angle Drive (1/4")

483 90 Degree Gearless Angle Drive (3/8")

- Allows access to hard to reach areas.
- Replaces hard to use universal adapters.
- Exceeds ANSI specs torque max for universal socket adapters.
- Patented.



485 45 Degree Gearless Angle Drive (1/4")

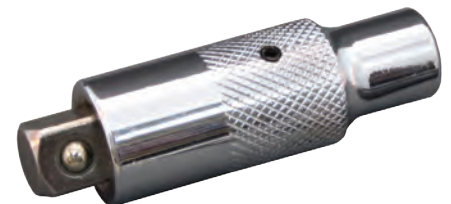
- Allows access to hard to reach areas.
- Replaces hard to use universal adapters.
- Exceeds ANSI specs torque max for universal socket adapters.



488 Twin Spin Drive Converter (1/4"- 3/8")

489 Twin Spin Drive Converter (3/8"- 1/2")

- Can be used to use a 1/4" drive socket on a 3/8" ratchet or a 3/8" drive socket on a 1/4" ratchet.
- Can withstand higher torque than traditional adapters.
- Can be used as a small extension or hand drive for tight access.
- Patented.



48100 Master Ratchet Accessory Set

- Set Includes many popular items available.
- All the items you need to get to tight access areas, around corners, and adapt sockets to step up and down.
- Set Includes: Two (2) Gearless Angle Drives, two (2) Twin Spin Converters and one (1) Finger Bit Driver w/bits.

