

Professional Ratchets

Made in the U.S.A., featuring quality workmanship and value.



Smooth Ratcheting Action

Completely enclosed ratchet mechanism with triple tooth contact for smooth ratcheting action with little back movement. Diamond knurled grip for sure handling.

SuperKrome® Finish

High polish SuperKrome® plating results in a jewelry-like finish, providing long life and maximum corrosion resistance.

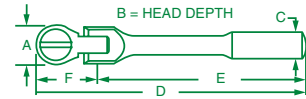
1/4" Drive Professional Flex Head Ratchets



New! DT120 Ratchet Mechanism - 800700-2

60 Tooth Design

60 Tooth Design



1/4" Drive Professional Flex Head Reversible Ratchet

PART NO.	SIZE	A	B	C	D	E	F
40972	6.3"	1.00	0.48	0.42	6.30	4.81	1.49

Rebuild Kits for 40972

REBUILD KIT* PART NO.	REPAIR KIT** PART NO.
40970-2	40970-9

*Kit Includes: Cap, Inner Body, Clip Spring and Grease

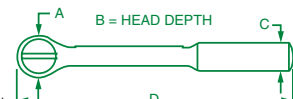
**Kit Includes: Pawl, Stem Pin, Clip Spring and Grease

1/4" Drive Ratchets

PART NO.	REBUILD KIT* PART NO.	REPAIR KIT** PART NO.	SIZE	A	B	C	D
40970	40970-2	40970-9A	4.5"	1.00	0.48	0.40	4.50
40971	40970-2	40970-9A	6.5"	1.00	0.48	0.48	6.50
800700	800700-2		4.5"	1.00	0.48	0.40	4.50

*Kit Includes: Cap, Inner Body, Clip Spring and Grease

**Kit Includes: Pawl, Stem Pin, Clip Spring and Grease

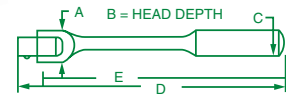


1/4" Drive Flex Head Handle

PART NO.	REPAIR KIT* PART NO.	REPAIR KIT** PART NO.	SIZE	A	B	C	D
40952	40952-9	40952-9A	5.4"	0.63	0.56	0.44	5.43

*Kit Includes: Pin, Lockwasher, and Square Drive Head

**Kit Includes: Screw, Lockwasher, and Square Drive Head

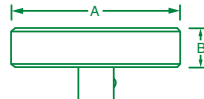
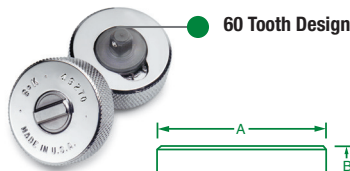


1/4" Drive Professional Thumbwheel Ratchet

PART NO.	REBUILD KIT* PART NO.	REPAIR KIT** PART NO.	SIZE	A	B
49270	40970-2	40970-9A	1.5"	1.50	0.48

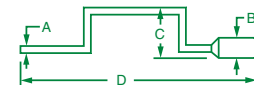
*Kit Includes: Cap, Inner Body, Clip Spring and Grease

**Kit Includes: Pawl, Stem Pin, Clip Spring and Grease



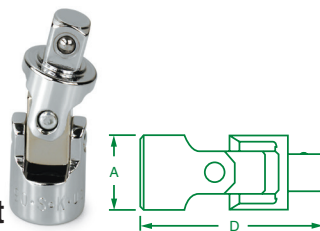
1/4" Drive Speeder Handle

PART NO.	SIZE	A	B	C	D
40981	14.5"	0.31	0.81	3.37	14.50



1/4" Drive Universal Joint

PART NO.	SIZE	A	D
40990	1/4"	0.50	1.30



1/4" Drive Extension Spinner Handle

PART NO.	SIZE
40953	6"

Can also be used as a 6" extension



Standard Socket Sets



No. 4913

13 Piece, 1/4" Drive, 6 Point, Standard Fractional Socket Set Includes:

PART NO.	SIZE	PART NO.	SIZE	PART NO.	SIZE
40906	3/16"	40909	9/32"	40912	3/8"
40907	7/32"	40910	5/16"	40914	7/16"
40908	1/4"	40911	11/32"	40916	1/2"
40970	1/4" Drive Ratchet, 4.5"		40961 2" Extension		
40953	1/4" Drive Spinner Handle		40962 6" Extension		

Packaged in a molded plastic case.



No. 4952

22 Piece, 1/4" Drive, 12 Point, Standard Fractional Socket Set Includes:

STANDARD SOCKET	SIZE	STANDARD SOCKET	SIZE	DEEP SOCKET	SIZE	DEEP SOCKET	SIZE
43908	1/4"	43914	7/16"	44907	7/32"	44912	3/8"
43909	9/32"	43916	1/2"	44908	1/4"	44914	7/16"
43910	5/16"	43918	9/16"	44909	9/32"	44916	1/2"
43911	11/32"			44910	5/16"	44918	9/16"
43912	3/8"			44911	11/32"		

40970 1/4" Drive Ratchet, 4.5"
 40953 1/4" Drive Spinner Handle
 40990 1/4" Drive Universal
 40961 2" Extension
 40962 6" Extension

Packaged in a molded plastic case.



No. 4921

21 Piece, 1/4" Drive, 6 Point, Standard Fractional Socket Set Includes:

STANDARD SOCKET	SIZE	STANDARD SOCKET	SIZE	STANDARD SOCKET	SIZE	DEEP SOCKET	SIZE	DEEP SOCKET	SIZE	DEEP SOCKET	SIZE
40906	3/16"	40909	9/32"	40912	3/8"	41908	1/4"	41911	11/32"	41916	1/2"
40907	7/32"	40910	5/16"	40914	7/16"	41909	9/32"	41912	3/8"		
40908	1/4"	40911	11/32"	40916	1/2"	41910	5/16"	41914	7/16"		
40970	1/4" Drive Ratchet, 4.5"		40961 2" Extension		40990 1/4" Drive Universal						
40953	1/4" Drive Spinner Handle		40962 6" Extension								

Packaged in a molded plastic case.



No. 89009

21 Piece, 1/4" Drive, 6 Point, Standard and Deep Metric Socket Set Includes:

STANDARD SOCKETS	SIZE	STANDARD SOCKETS	SIZE	DEEP SOCKETS	SIZE	DEEP SOCKETS	SIZE
40701	4mm	40708	9mm	41701	6mm	41707	11mm
40702	5mm	40709	10mm	41703	7mm	41708	12mm
40704	6mm	40710	11mm	41704	8mm		
40706	7mm	40711	12mm	41705	9mm		
40707	8mm			41706	10mm		
40970	1/4" Drive Ratchet, 4.5"		40961		2" Extension		
40953	Spinner Handle		40962		6" Extension		
40990	Universal Joint						

Packaged in a molded plastic case.



No. 1314

14 Piece, 1/4" Drive, 6 Point, Standard Metric Socket Set Includes:

PART NO.	SIZE	PART NO.	SIZE	PART NO.	SIZE	PART NO.	SIZE
40701	4mm	40706	7mm	40709	10mm	40712	13mm
40702	5mm	40707	8mm	40710	11mm		
40704	6mm	40708	9mm	40711	12mm		
40970	1/4" Drive Ratchet, 4.5"		40961		2" Extension		
40953	Spinner Handle		40962		6" Extension		

Packaged in a molded plastic case.



No. 91848

48 Piece, 1/4" Drive, 6 Point, Standard and Deep, Fractional and Metric Socket Set with Universal Joint Includes:

STANDARD SOCKETS	SIZE	DEEP SOCKETS	SIZE	STANDARD SOCKETS	SIZE	DEEP SOCKETS	SIZE
40906	3/16"	41908	1/4"	40701	4mm	41701	6mm
40907	7/32"	41909	9/32"	40702	5mm	41703	7mm
40908	1/4"	41910	5/16"	40703	5.5mm	41704	8mm
40909	9/32"	41911	11/32"	40704	6mm	41705	9mm
40910	5/16"	41912	3/8"	40706	7mm	41706	10mm
40911	11/32"	41914	7/16"	40707	8mm	41707	11mm
40912	3/8"	41916	1/2"	40708	9mm	41708	12mm
40914	7/16"	41918	9/16"	40709	10mm	41709	13mm
40916	1/2"			40710	11mm	41710	14mm
40918	9/16"			40711	12mm	41711	15mm
				40712	13mm		
				40713	14mm		
				40714	15mm		
40970	1/4" Drive Ratchet, 4.5"		385		1/4" F-3/8" M Adapter		
49270	Thumbwheel Ratchet		384		3/8" F-1/4" M Adapter		
40961	2" Extension		40990				1/4" Drive Universal Joint
40962	6" Extension						

Packaged in a molded plastic case.



No. 94932

32 Piece, 1/4" Drive, 6 Point, Standard and Deep, Fractional and Metric Socket Set Includes:

STANDARD SOCKETS	SIZE	DEEP SOCKETS	SIZE	STANDARD SOCKETS	SIZE	DEEP SOCKETS	SIZE
40908	1/4"	41908	1/4"	40704	6mm	41701	6mm
40909	9/32"	41909	9/32"	40706	7mm	41703	7mm
40910	5/16"	41910	5/16"	40707	8mm	41704	8mm
40911	11/32"	41911	11/32"	40708	9mm	41705	9mm
40912	3/8"	41912	3/8"	40709	10mm	41706	10mm
40914	7/16"	41914	7/16"	40710	11mm	41707	11mm
40916	1/2"	41916	1/2"	40711	12mm	41708	12mm
40970	1/4" Drive Ratchet, 4.5"			40961	2" Extension		
40953	Spinner Handle			40962	6" Extension		

Packaged in a molded plastic case.



No. 91824

24 Piece, 1/4" Drive, 6 Point, Semi-Deep, Fractional and Metric Socket Set Includes:

PART NO.	SIZE	PART NO.	SIZE	PART NO.	SIZE	PART NO.	SIZE
41866	3/16"	41872	3/8"	41674	5mm	41680	10mm
41867	7/32"	41874	7/16"	41675	5.5mm	41681	11mm
41868	1/4"	41876	1/2"	41676	6mm	41686	12mm
41869	9/32"	41878	9/16"	41677	7mm	41683	13mm
41870	5/16"			41678	8mm	41684	14mm
41871	11/32"			41679	9mm	41685	15mm
40970	1/4" Drive Ratchet, 4.5"			40953	Spinner Handle		

Packaged in a molded plastic case.

SOCKETS, RATCHETS, AND BITS



No. 94562

62 Piece, 1/4" and 3/8" Drive, 6 Point, Standard and Deep Metric Socket Set Includes:

1/4" DRIVE STANDARD SOCKETS	SIZE	1/4" DRIVE DEEP SOCKETS	SIZE	3/8" DRIVE STANDARD SOCKETS	SIZE	3/8" DRIVE DEEP SOCKETS	SIZE
40701	4mm	41700	5.5mm	306	6mm	8408	8mm
40700	4.5mm	41701	6mm	307	7mm	8409	9mm
40702	5mm	41703	7mm	308	8mm	8410	10mm
40703	5.5mm	41704	8mm	309	9mm	8411	11mm
40704	6mm	41705	9mm	310	10mm	8412	12mm
40706	7mm	41706	10mm	311	11mm	8413	13mm
40707	8mm	41707	11mm	312	12mm	8414	14mm
40708	9mm	41708	12mm	313	13mm	8415	15mm
40709	10mm	41709	13mm	314	14mm	8416	16mm
40710	11mm	41710	14mm	315	15mm	8417	17mm
40711	12mm	41711	15mm	316	16mm	8418	18mm
40712	13mm			317	17mm	8419	19mm
40713	14mm			318S	18mm		
40714	15mm			319	19mm		
				320	20mm		
				321	21mm		
				322	22mm		

40970	1/4" Drive Ratchet, 4.5"	45170	3/8" Drive Ratchet, 7.6"
40961	1/4" Drive, 2" Extension	45190	3/8" Universal Joint
40962	1/4" Drive, 6" Extension	45160	3/8" Drive, 3" Extension
384	3/8" F-1/4" M Adapter	45161	3/8" Drive, 6" Extension

Packaged in a molded plastic case.

SUPERKROME TESTED TOUGH