

Standard Sockets



S•K Quality

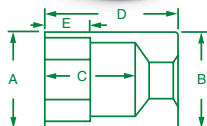
S•K hand tools, including our chrome sockets, are manufactured to rigid specifications. At each step in the production process, quality control procedures ensure that every tool will deliver exceptional, long-lasting performance.



It's why S•K tools meet or exceed national and international standards.

SOCKETS, RATCHETS, AND BITS

1/4" Drive, 6 and 12 Point, Standard Metric Sockets



6 POINT PART NO.	12 POINT PART NO.	HEX SIZE	A	B	C	D	E
40701	—	4mm	0.28	0.47	0.51	0.87	0.10
40700	—	4.5mm	0.29	0.47	0.41	0.87	0.12
40702	43702	5mm	0.31	0.47	0.51	0.88	0.11
40703	43703	5.5mm	0.34	0.47	0.51	0.87	0.11
40704	43704	6mm	0.36	0.47	0.51	0.88	0.12
40706	43706	7mm	0.42	0.47	0.51	0.88	0.14
40707	43707	8mm	0.47	0.47	0.51	0.88	0.14
40708	43708	9mm	0.50	0.50	0.57	0.88	0.16
40709	43709	10mm	0.56	0.56	0.57	0.88	0.19
40710	43710	11mm	0.63	0.63	0.57	0.88	0.22
40711	43711	12mm	0.66	0.66	0.57	0.88	0.24
40712	43712	13mm	0.72	0.72	0.57	0.88	0.27
40713	43713	14mm	0.75	0.75	0.57	0.88	0.33
40714	—	15mm	0.81	0.81	0.57	0.88	0.36
40715	—	16mm	0.87	0.87	0.56	0.88	0.38



No. 1340

10 Piece, 1/4" Drive, 12 Point, Standard Metric Socket Set Includes:

PART NO.	SIZE	PART NO.	SIZE	PART NO.	SIZE	PART NO.	SIZE
43702	5mm	43707	8mm	43710	11mm	43713	14mm
43704	6mm	43708	9mm	43711	12mm		
43706	7mm	43709	10mm	43712	13mm		

Packaged on a rail.



No. 1313

13 Piece, 1/4" Drive, 6 Point, Standard Metric Socket Set Includes:

PART NO.	SIZE	PART NO.	SIZE	PART NO.	SIZE	PART NO.	SIZE	PART NO.	SIZE	PART NO.	SIZE	PART NO.	SIZE
40701	4mm	40703	5.5mm	40706	7mm	40708	9mm	40710	11mm	40712	13mm	40714	15mm
40702	5mm	40704	6mm	40707	8mm	40709	10mm	40711	12mm	40713	14mm		

Packaged on a rail.