

No. 86850A-1

850 Pc. Senior Mechanics Tool Set

MASTER SETS

PART NO.	SET COUNT	DESCRIPTION
40972	1	¼" Drive Pro Flex Head Ratchet
49270	1	¼" Drive Thumbwheel Ratchet
4916T	6	¼" Drive Extension Set
40990	1	¼" Drive Universal Joint
4506	5	¼", ⅜" and ½" Drive Adapter Set
91844	44	¼" Drive 6 Point Standard and Deep Fract./Met. Socket Set
4934	7	¼" Drive 6 Point Flex Fractional Socket Set
1337	12	¼" Drive 6 Point Flex Metric Socket Set
89039	33	¼" and ⅜" Drive Master Bit Socket Set
19763	35	¼", ⅜", and ½" Drive TORX® Bit Socket SuperSet®
45183	1	⅜" Drive Pro Flex Head Ratchet
45178	1	⅜" Drive Pro Stubby Ratchet
4514	4	⅜" Drive Extension Set
4524	4	⅜" Drive Wobble Extension Set
45190	1	⅜" Drive Universal Joint
94549	49	⅜" Drive 6 Point Fractional/Metric Socket Set with Universal Joint
4607	7	⅜" Drive 6 Point Flex Fractional Socket Set
3910	10	⅜" Drive 6 Point Flex Metric Socket Set
19704	4	⅜" and ½" Drive Triple Square Bit Socket Set
19781	11	⅜" Drive Male and Female Pipe Plug Socket Set
42470	1	½" Drive 10.3" Pro Ratchet
40170	1	½" Drive 15" Pro Ratchet
42472	1	½" Drive Pro Flex Head Ratchet
41652	1	½" Drive Pro Stubby Ratchet
4114	3	½" Drive Extension Set
4121	19	½" Drive 12 Point Standard Fractional Socket Set
4819	19	½" Drive 12 Point Deep Fractional Socket Set
1959	19	½" Drive 6 Point Standard Metric Socket Set
1947	21	½" Drive 6 Point Deep Metric Socket Set
19798	8	½" Drive Male Pipe Plug Socket Set
4725	25	¾" Drive 12 Point Standard Fractional Socket Set
19766	6	¾" Drive Fractional Ball Hex Bit Socket Set
19752	8	¾" Drive Metric Ball Hex Bit Socket Set
19726	6	¾" Drive Metric Long Ball Hex Bit Socket Set
45674	3	¾" Drive Impact Extension Set
33990	1	¾" Drive Impact Universal Joint
4058	8	¾" Drive 6 Point Standard Fractional Impact Socket Set
4062	12	¾" Drive 6 Point Standard Metric Impact Socket Set
4078	8	¾" Drive 6 Point Deep Fractional Impact Socket Set
4082	12	¾" Drive 6 Point Deep Metric Impact Socket Set
33300	8	¾" Drive 6 Point Standard Fractional Swivel Impact Socket Set
33350	15	¾" Drive 6 Point Standard Metric Swivel Impact Socket Set
46170	1	½" Drive 3" Impact Extension with Ball Retainer
46171	1	½" Drive 5" Impact Extension with Ball Retainer
34990	1	½" Drive Impact Universal Joint
4039	19	½" Drive 6 Point Standard Fractional Impact Socket Set
4049	19	½" Drive 6 Point Deep Fractional Impact Socket Set
4037	25	½" Drive 6 Point Standard Metric Impact Socket Set
4047	26	½" Drive 6 Point Deep Metric Impact Socket Set
34300	13	½" Drive 6 Point Standard Fractional Swivel Impact Socket Set

PART NO.	SET COUNT	DESCRIPTION
34350	15	½" Drive 6 Point Standard Metric Swivel Impact Socket Set
46125	1	½" Drive Fractional Flip Impact Socket
46119	1	½" Drive Metric Flip Impact Socket
756	16	½" Drive TurboSocket® Set
803	13	⅜" Drive TurboSocket® Set
4498	8	Spark Plug Socket Set
86043	23	6 and 12 Point SuperKrome® Fractional Combination Wrench Set
86225	23	12 Point SuperKrome® Metric Combination Wrench Set
86017	13	12 Point SuperKrome® Fractional Long Pattern Combination Wrench Set
86037	19	12 Point SuperKrome® Metric Long Pattern Combination Wrench Set
86231	11	12 Point SuperKrome® Fractional Short Pattern Combination Wrench Set
86240	10	12 Point SuperKrome® Metric Short Pattern Combination Wrench Set
86241	5	12 Point SuperKrome® Metric Short Pattern Combination Wrench Set
386	5	SuperKrome® Fractional 15° Offset Flare Nut Wrench Set
378	6	SuperKrome® Fractional 15° Offset Flare Nut Wrench Set
4508	10	Fractional Flare Nut Crowfoot Wrench Set
4511	11	Metric Flare Nut Crowfoot Wrench Set
8008	1	8" Adjustable Wrench
8012	1	12" Adjustable Wrench
8015	1	15" Adjustable Wrench
77250	9	Adjustable Micrometer Torque Wrench 25–250 ft. lb.
86320	6	SureGrip® Screwdriver Set
86321	5	SureGrip® Long Reach Screwdriver Set
86322	5	SureGrip® Heavy Duty Screwdriver Set
86323	7	SureGrip® TORX® Screwdriver Set
86325	4	SureGrip® Stubby Screwdriver Set
19613	13	Fractional Ball Hex Key Set
19609	9	Metric Ball Hex Key Set
7509	1	9½" V-Jaw Tongue and Groove Pliers
7511	1	10½" V-Jaw Tongue and Groove Pliers
7516	1	16" Tongue and Groove Pliers
7210	1	10" Slip Joint Pliers
16315	1	6" Curved Chain Nose Pliers without Cutter
17835	5	General Purpose Pliers Set
17832	2	Extra Long Needle Nose Pliers Set
7612	12	Convertible Retaining Ring Pliers Set
7695	1	Wire Cutter/Stripper
8616	1	12" 16 oz Soft Face Hammer
8516	1	12" 12 oz Ball Peen Hammer
8542	1	13.5" Cross Peen Hammer with Hickory Handle
6020	20	Punch and Chisel Set
6069	9	Roll Pin Punch Set
6093	3	Pry Bar Set

No. 86650A-1

650 Pc. Senior Mechanics Tool Set

MASTER SETS

PART NO.	SET COUNT	DESCRIPTION
40972	1	¼" Drive Pro Flex Head Ratchet
49270	1	¼" Drive Thumbwheel Ratchet
4916T	6	¼" Drive Extension Set
40990	1	¼" Drive Universal Joint
4506	5	¼", ⅜" and ½" Drive Adapter Set
91844	44	¼" Drive 6 Point Standard and Deep Fractional/Metric Socket Set
4934	7	¼" Drive 6 Point Flex Fractional Socket Set
1337	12	¼" Drive 6 Point Flex Metric Socket Set
84213	13	¼", ⅜" and ½" Drive Female TORX® Socket Set
19769	9	¼" and ⅜" Tamper-Proof TORX® Bit Socket Set
19760	10	¼", ⅜" and ½" Drive Female TORX® Socket Set
45183	1	⅜" Drive Pro Flex Head Ratchet
45178	1	⅜" Drive Pro Stubby Ratchet
4514	4	⅜" Drive Extension Set
4524	4	⅜" Drive Wobble Extension Set
45190	1	⅜" Drive Universal Joint
94549	49	⅜" Drive 6 Point Fractional/Metric Socket Set with Universal Joint
4607	7	⅜" Drive 6 Point Flex Fractional Socket Set
3910	10	⅜" Drive 6 Point Flex Metric Socket Set
19733	9	⅜" and ½" Drive Fractional Hex Bit Socket Set
41255	5	½" Drive Fractional Hex Bit Socket Set
19734	9	⅜" and ½" Drive Metric Hex Bit Socket Set
19704	4	⅜" and ½" Drive Triple Square Bit Socket Set
19781	11	⅜" Drive Male and Female Pipe Plug Socket Set
42470	1	½" Drive 10.3" Pro Ratchet
40170	1	½" Drive 15" Pro Ratchet
42472	1	½" Drive Pro Flex Head Ratchet
41652	1	½" Drive Pro Stubby Ratchet
4114	3	½" Drive Extension Set
4122	15	½" Drive 12 Point Standard Fractional Socket Set
4815	15	½" Drive 12 Point Deep Fractional Socket Set
1959	19	½" Drive 6 Point Standard Metric Socket Set
1945	15	½" Drive 6 Point Deep Metric Socket Set
33990	1	⅝" Drive Impact Universal Joint
4058	8	⅝" Drive 6 Point Standard Fractional Swivel Impact Socket Set
4062	12	⅝" Drive 6 Point Standard Metric Impact Socket Set
4078	8	⅝" Drive 6 Point Deep Fractional Impact Socket Set
4082	12	⅝" Drive 6 Point Deep Metric Impact Socket Set
33300	8	⅝" Drive 6 Point Standard Fractional Swivel Impact Socket Set
33351	10	⅝" Drive 6 Point Standard Metric Swivel Impact Socket Set
46170	1	½" Drive 3" Impact Extension with Ball Retainer
46171	1	½" Drive 5" Impact Extension with Ball Retainer
34990	1	½" Drive Impact Universal Joint
4035	15	½" Drive 6 Point Standard Fractional Impact Socket Set
4045	15	½" Drive 6 Point Deep Fractional Impact Socket Set

PART NO.	SET COUNT	DESCRIPTION
4037	25	½" Drive 6 Point Standard Metric Impact Socket Set
4048	15	½" Drive 6 Point Deep Metric Impact Socket Set
46125	1	½" Drive Fractional Flip Impact Socket
46119	1	½" Drive Metric Flip Impact Socket
756	16	½" Drive TurboSocket® Set
86013	13	6 and 12 Point SuperKrome® Fractional Combination Wrench Set
86223	16	12 Point SuperKrome® Metric Combination Wrench Set
86016	9	12 Point SuperKrome® Fractional Long Pattern Combination Wrench Set
86040	12	12 Point SuperKrome® Metric Long Pattern Combination Wrench Set
86231	11	12 Point SuperKrome® Fractional Short Pattern Combination Wrench Set
86240	10	12 Point SuperKrome® Metric Short Pattern Combination Wrench Set
386	5	SuperKrome® Fractional 15° Offset Flare Nut Wrench Set
378	6	SuperKrome® Fractional 15° Offset Flare Nut Wrench Set
4508	10	Fractional Flare Nut Crowfoot Wrench Set
4511	11	Metric Flare Nut Crowfoot Wrench Set
8008	1	8" Adjustable Wrench
8012	1	12" Adjustable Wrench
8015	1	15" Adjustable Wrench
77250	1	Adjustable Micrometer Torque Wrench, 20–250 ft. lb.
86320	6	SureGrip® Screwdriver Set
86321	5	SureGrip® Long Reach Screwdriver Set
86322	5	SureGrip® Heavy Duty Screwdriver Set
19613	13	Fractional Ball Hex Key Set
19609	9	Metric Ball Hex Key Set
16315	1	6" Curved Chain Nose Pliers without Cutter
17835	5	General Purpose Pliers Set
17832	2	Extra Long Needle Nose Pliers Set
7509	1	9½" Tongue and Groove Pliers V-Jaw
7511	1	10½" Tongue and Groove Pliers V-Jaw
7516	1	16" Tongue and Groove Pliers
7210	1	10" Slip Joint Pliers
7612	12	Convertible Retaining Ring Pliers Set
7695	1	Wire Cutter/Stripper
15032	1	8" Battery Cable Cutter
8616	1	12" 16 oz. Soft Face Hammer
8516	1	12" 12 oz. Ball Peen Hammer
6020	20	Punch and Chisel Set
6069	9	Roll Pin Punch Set
6093	3	Pry Bar Set

Professional Ratchets

Made in the U.S.A., featuring quality workmanship and value.



Smooth Ratcheting Action

Completely enclosed ratchet mechanism with triple tooth contact for smooth ratcheting action with little back movement. Diamond knurled grip for sure handling.

SuperKrome® Finish

High polish SuperKrome® plating results in a jewelry-like finish, providing long life and maximum corrosion resistance.

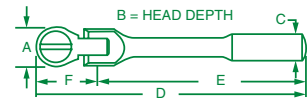
1/4" Drive Professional Flex Head Ratchets



New! DT120 Ratchet Mechanism - 800700-2

60 Tooth Design

60 Tooth Design



1/4" Drive Professional Flex Head Reversible Ratchet

PART NO.	SIZE	A	B	C	D	E	F
40972	6.3"	1.00	0.48	0.42	6.30	4.81	1.49

Rebuild Kits for 40972

REBUILD KIT* PART NO.	REPAIR KIT** PART NO.
40970-2	40970-9

*Kit Includes: Cap, Inner Body, Clip Spring and Grease

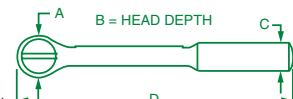
**Kit Includes: Pawl, Stem Pin, Clip Spring and Grease

1/4" Drive Ratchets

PART NO.	REBUILD KIT* PART NO.	REPAIR KIT** PART NO.	SIZE	A	B	C	D
40970	40970-2	40970-9A	4.5"	1.00	0.48	0.40	4.50
40971	40970-2	40970-9A	6.5"	1.00	0.48	0.48	6.50
800700	800700-2		4.5"	1.00	0.48	0.40	4.50

*Kit Includes: Cap, Inner Body, Clip Spring and Grease

**Kit Includes: Pawl, Stem Pin, Clip Spring and Grease

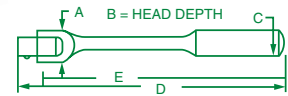


1/4" Drive Flex Head Handle

PART NO.	REPAIR KIT* PART NO.	REPAIR KIT** PART NO.	SIZE	A	B	C	D
40952	40952-9	40952-9A	5.4"	0.63	0.56	0.44	5.43

*Kit Includes: Pin, Lockwasher, and Square Drive Head

**Kit Includes: Screw, Lockwasher, and Square Drive Head

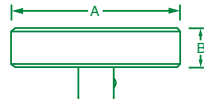
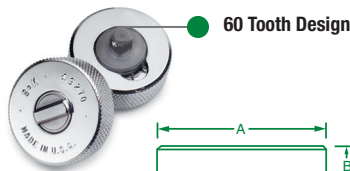


1/4" Drive Professional Thumbwheel Ratchet

PART NO.	REBUILD KIT* PART NO.	REPAIR KIT** PART NO.	SIZE	A	B
49270	40970-2	40970-9A	1.5"	1.50	0.48

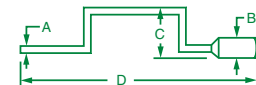
*Kit Includes: Cap, Inner Body, Clip Spring and Grease

**Kit Includes: Pawl, Stem Pin, Clip Spring and Grease



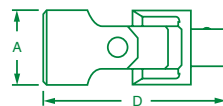
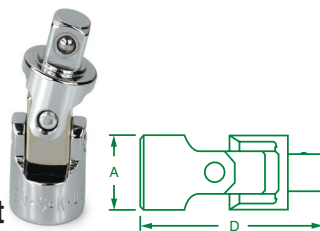
1/4" Drive Speeder Handle

PART NO.	SIZE	A	B	C	D
40981	14.5"	0.31	0.81	3.37	14.50



1/4" Drive Universal Joint

PART NO.	SIZE	A	D
40990	1/4"	0.50	1.30



1/4" Drive Extension Spinner Handle

PART NO.	SIZE
40953	6"

Can also be used as a 6" extension



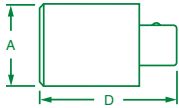
Adapters

Added Versatility

Extend the performance capabilities of your S•K tool set with our line of adapters.

SuperKrome® Finish

High polish SuperKrome® plating results in a jewelry-like finish, providing long life and maximum corrosion resistance.



Adapters

PART NO.	SIZE	A	D
385	1/4"F-3/8"M Drive	0.50	0.94
384	3/8"F-1/4"M Drive	0.68	1.12
451	3/8"F-1/2"M Drive	0.68	1.31
401	1/2"F-3/8"M Drive	0.87	1.36
407	1/2"F-3/4"M Drive	1.00	1.87
409	3/4"F-1/2"M Drive	1.38	2.00
40995	1/4"F-1/4"M Drive, Locking	0.50	1.78
45195	3/8" Drive, Chrome, Locking	0.50	1.78



SuperKrome® Finish

**SUPERKROME
TESTED TOUGH**

Added Versatility



No. 4506

5 Piece, Chrome Adapter Set Includes:

PART NO.	SIZE	PART NO.	SIZE
385	1/4"F-3/8"M Drive	407	1/2"F-3/4"M Drive
384	3/8"F-1/4"M Drive	451	3/8"F-1/2"M Drive
401	1/2"F-3/8"M Drive		

Packaged on a rail.



No. 4010

9 Piece, Universal/Adapter Set Includes:

PART NO.	DESCRIPTION	PART NO.	DESCRIPTION
33990	3/8" Impact Universal	384	3/8"F-1/4"M Drive, Adapter
34990	1/2" Impact Universal	451	3/8"F-1/2"M Drive, Adapter
40990	1/4" Chrome Universal	401	1/2"F-3/8"M Drive, Adapter
45190	3/8" Chrome Universal	407	1/2"F-3/4"M Drive Adapter
385	1/4"F-3/8"M Drive Adapter		

Packaged in a molded plastic case.



No. 4518

8 Piece, Chrome Universal/Adapter Set Includes:

PART NO.	DESCRIPTION	PART	DESCRIPTION
385	1/4"F-3/8"M Drive, Adapter	451	3/8"F-1/2"M Drive, Adapter
384	3/8"F-1/4"M Drive, Adapter	40990	1/4" Drive Universal Joint
401	1/2"F-3/8"M Drive, Adapter	45190	3/8" Drive Universal Joint
407	1/2"F-3/4"M Drive, Adapter	40190	1/2" Drive Universal Joint

Packaged on a rail

SOCKETS, RATCHETS, AND BITS

Standard Socket Sets



No. 4913

13 Piece, 1/4" Drive, 6 Point, Standard Fractional Socket Set Includes:

PART NO.	SIZE	PART NO.	SIZE	PART NO.	SIZE
40906	3/16"	40909	9/32"	40912	3/8"
40907	7/32"	40910	5/16"	40914	7/16"
40908	1/4"	40911	11/32"	40916	1/2"
40970	1/4" Drive Ratchet, 4.5"		40961 2" Extension		
40953	1/4" Drive Spinner Handle		40962 6" Extension		

Packaged in a molded plastic case.



No. 4952

22 Piece, 1/4" Drive, 12 Point, Standard Fractional Socket Set Includes:

STANDARD SOCKET	SIZE	STANDARD SOCKET	SIZE	DEEP SOCKET	SIZE	DEEP SOCKET	SIZE
43908	1/4"	43914	7/16"	44907	7/32"	44912	3/8"
43909	9/32"	43916	1/2"	44908	1/4"	44914	7/16"
43910	5/16"	43918	9/16"	44909	9/32"	44916	1/2"
43911	11/32"			44910	5/16"	44918	9/16"
43912	3/8"			44911	11/32"		
40970	1/4" Drive Ratchet, 4.5"		40961		2" Extension		
40953	1/4" Drive Spinner Handle		40962		6" Extension		
40990	1/4" Drive Universal						

Packaged in a molded plastic case.



No. 4921

21 Piece, 1/4" Drive, 6 Point, Standard Fractional Socket Set Includes:

STANDARD SOCKET	SIZE	STANDARD SOCKET	SIZE	STANDARD SOCKET	SIZE	DEEP SOCKET	SIZE	DEEP SOCKET	SIZE	DEEP SOCKET	SIZE
40906	3/16"	40909	9/32"	40912	3/8"	41908	1/4"	41911	11/32"	41916	1/2"
40907	7/32"	40910	5/16"	40914	7/16"	41909	9/32"	41912	3/8"		
40908	1/4"	40911	11/32"	40916	1/2"	41910	5/16"	41914	7/16"		
40970	1/4" Drive Ratchet, 4.5"		40961		2" Extension		40990 1/4" Drive Universal				
40953	1/4" Drive Spinner Handle		40962		6" Extension						

Packaged in a molded plastic case.



No. 89009

21 Piece, 1/4" Drive, 6 Point, Standard and Deep Metric Socket Set Includes:

STANDARD SOCKETS	SIZE	STANDARD SOCKETS	SIZE	DEEP SOCKETS	SIZE	DEEP SOCKETS	SIZE
40701	4mm	40708	9mm	41701	6mm	41707	11mm
40702	5mm	40709	10mm	41703	7mm	41708	12mm
40704	6mm	40710	11mm	41704	8mm		
40706	7mm	40711	12mm	41705	9mm		
40707	8mm			41706	10mm		
40970	1/4" Drive Ratchet, 4.5"		40961		2" Extension		
40953	Spinner Handle		40962		6" Extension		
40990	Universal Joint						

Packaged in a molded plastic case.



No. 1314

14 Piece, 1/4" Drive, 6 Point, Standard Metric Socket Set Includes:

PART NO.	SIZE	PART NO.	SIZE	PART NO.	SIZE	PART NO.	SIZE
40701	4mm	40706	7mm	40709	10mm	40712	13mm
40702	5mm	40707	8mm	40710	11mm		
40704	6mm	40708	9mm	40711	12mm		
40970	1/4" Drive Ratchet, 4.5"		40961		2" Extension		
40953	Spinner Handle		40962		6" Extension		

Packaged in a molded plastic case.



No. 91848

48 Piece, 1/4" Drive, 6 Point, Standard and Deep, Fractional and Metric Socket Set with Universal Joint Includes:

STANDARD SOCKETS	SIZE	DEEP SOCKETS	SIZE	STANDARD SOCKETS	SIZE	DEEP SOCKETS	SIZE
40906	3/16"	41908	1/4"	40701	4mm	41701	6mm
40907	7/32"	41909	9/32"	40702	5mm	41703	7mm
40908	1/4"	41910	5/16"	40703	5.5mm	41704	8mm
40909	9/32"	41911	11/32"	40704	6mm	41705	9mm
40910	5/16"	41912	3/8"	40706	7mm	41706	10mm
40911	11/32"	41914	7/16"	40707	8mm	41707	11mm
40912	3/8"	41916	1/2"	40708	9mm	41708	12mm
40914	7/16"	41918	9/16"	40709	10mm	41709	13mm
40916	1/2"			40710	11mm	41710	14mm
40918	9/16"			40711	12mm	41711	15mm
				40712	13mm		
				40713	14mm		
				40714	15mm		
40970	1/4" Drive Ratchet, 4.5"		385		1/4" F-3/8" M Adapter		
49270	Thumbwheel Ratchet		384		3/8" F-1/4" M Adapter		
40961	2" Extension		40990				1/4" Drive Universal Joint
40962	6" Extension						

Packaged in a molded plastic case.

SOCKETS, RATCHETS, AND BITS



S•K's Most Complete 1/4" Drive Set

No. 91860

60 Piece, 1/4" Drive, 6 Point, Standard and Deep, Fractional and Metric Socket SuperSet® Includes:

STANDARD SOCKETS	SIZE	DEEP SOCKETS	SIZE	STANDARD SOCKETS	SIZE	DEEP SOCKETS	SIZE
40904	1/8"	41904	1/8"	40701	4mm	41697	4mm
40905	5/32"	41905	5/32"	40700	4.5mm	41698	4.5mm
40906	3/16"	41906	3/16"	40702	5mm	41699	5mm
40907	7/32"	41907	7/32"	40703	5.5mm	41700	5.5mm
40908	1/4"	41908	1/4"	40704	6mm	41701	6mm
40909	9/32"	41909	9/32"	40706	7mm	41703	7mm
40910	5/16"	41910	5/16"	40707	8mm	41704	8mm
40911	11/32"	41911	11/32"	40708	9mm	41705	9mm
40912	3/8"	41912	3/8"	40709	10mm	41706	10mm
40914	7/16"	41914	7/16"	40710	11mm	41707	11mm
40916	1/2"	41916	1/2"	40711	12mm	41708	12mm
40918	9/16"	41918	9/16"	40712	13mm	41709	13mm
40920	5/8"			40713	14mm	41710	14mm
				40714	15mm	41711	15mm
				40715	16mm		
40970 1/4" Drive Ratchet, 4.5"				40962 6" Extension			
40990 Universal Joint				385 1/4"F-3/8"M Drive Adapter			
40961 2" Extension				384 3/8"F-1/4"M Drive Adapter			

Packaged in a molded plastic case.



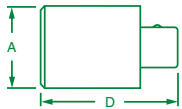
Adapters

Added Versatility

Extend the performance capabilities of your S•K tool set with our line of adapters.

SuperKrome® Finish

High polish SuperKrome® plating results in a jewelry-like finish, providing long life and maximum corrosion resistance.



**SUPERKROME
TESTED TOUGH**

Adapters

PART NO.	SIZE	A	D
385	1/4"F-3/8"M Drive	0.50	0.94
384	3/8"F-1/4"M Drive	0.68	1.12
451	3/8"F-1/2"M Drive	0.68	1.31
401	1/2"F-3/8"M Drive	0.87	1.36
407	1/2"F-3/4"M Drive	1.00	1.87
409	3/4"F-1/2"M Drive	1.38	2.00
40995	1/4"F-1/4"M Drive, Locking	0.50	1.78
45195	3/8" Drive, Chrome, Locking	0.50	1.78

*Kit Includes: One Replacement Screw

No. 4506

5 Piece, Chrome Adapter Set Includes:

PART NO.	SIZE	PART NO.	SIZE
385	1/4"F-3/8"M Drive	407	1/2"F-3/4"M Drive
384	3/8"F-1/4"M Drive	451	3/8"F-1/2"M Drive
401	1/2"F-3/8"M Drive		

Packaged on a rail.



No. 4518

8 Piece, Chrome Universal/Adapter Set Includes:

PART NO.	DESCRIPTION	PART	DESCRIPTION
385	1/4"F-3/8"M Drive, Adapter	451	3/8"F-1/2"M Drive, Adapter
384	3/8"F-1/4"M Drive, Adapter	40990	1/4" Drive Universal Joint
401	1/2"F-3/8"M Drive, Adapter	45190	3/8" Drive Universal Joint
407	1/2"F-3/4"M Drive, Adapter	40190	1/2" Drive Universal Joint

Packaged on a rail.



No. 4010

9 Piece, Universal/Adapter Set Includes:

PART NO.	DESCRIPTION	PART	DESCRIPTION
33990	3/8" Impact Universal	384	3/8"F-1/4"M Drive, Adapter
34990	1/2" Impact Universal	451	3/8"F-1/2"M Drive, Adapter
40990	1/4" Chrome Universal	401	1/2"F-3/8"M Drive, Adapter
45190	3/8" Chrome Universal	407	1/2"F-3/4"M Drive Adapter
385	1/4"F-3/8"M Drive Adapter		

Packaged in a molded plastic case.

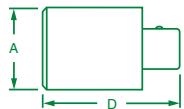
Adapters

Added Versatility

Extend the performance capabilities of your S•K tool set with our line of adapters.

SuperKrome® Finish

High polish SuperKrome® plating results in a jewelry-like finish, providing long life and maximum corrosion resistance.



No. 4506

5 Piece, Chrome Adapter Set Includes:

PART NO.	SIZE	PART NO.	SIZE
385	1/4"F-3/8"M Drive	407	1/2"F-3/4"M Drive
384	3/8"F-1/4"M Drive	451	3/8"F-1/2"M Drive
401	1/2"F-3/8"M Drive		

Packaged on a rail.

Adapters

PART NO.	SIZE	A	D
385	1/4"F-3/8"M Drive	0.50	0.94
384	3/8"F-1/4"M Drive	0.68	1.12
451	3/8"F-1/2"M Drive	0.68	1.31
401	1/2"F-3/8"M Drive	0.87	1.36
407	1/2"F-3/4"M Drive	1.00	1.87
409	3/4"F-1/2"M Drive	1.38	2.00
40995	1/4"F-1/4"M Drive, Locking	0.50	1.78
45195	3/8" Drive, Chrome, Locking	0.50	1.78



No. 4518

8 Piece, Chrome Universal/Adapter Set Includes:

PART NO.	DESCRIPTION	PART	DESCRIPTION
385	1/4"F-3/8"M Drive, Adapter	451	3/8"F-1/2"M Drive, Adapter
384	3/8"F-1/4"M Drive, Adapter	40990	1/4" Drive Universal Joint
401	1/2"F-3/8"M Drive, Adapter	45190	3/8" Drive Universal Joint
407	1/2"F-3/4"M Drive, Adapter	40190	1/2" Drive Universal Joint

Packaged on a rail.



No. 4010

9 Piece, Universal/Adapter Set Includes:

PART NO.	DESCRIPTION	PART NO.	SIZE
33990	3/8" Impact Universal	384	3/8"F-1/4"M Drive, Adapter
34990	1/2" Impact Universal	451	3/8"F-1/2"M Drive, Adapter
40990	1/4" Chrome Universal	401	1/2"F-3/8"M Drive, Adapter
45190	3/8" Chrome Universal	407	1/2"F-3/4"M Drive Adapter
385	1/4"F-3/8"M Drive Adapter		

Plastic molded plastic case.

**SUPERKROME
TESTED TOUGH**

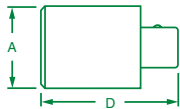
Adapters

Added Versatility

Extend the performance capabilities of your S•K tool set with our line of adapters.

SuperKrome® Finish

High polish SuperKrome® plating results in a jewelry-like finish, providing long life and maximum corrosion resistance.



Adapters

PART NO.	SIZE	A	D
385	1/4" F-3/8" M Drive	0.50	0.94
384	3/8" F-1/4" M Drive	0.68	1.12
451	3/8" F-1/2" M Drive	0.68	1.31
401	1/2" F-3/8" M Drive	0.87	1.36
407	1/2" F-3/4" M Drive	1.00	1.87
409	3/4" F-1/2" M Drive	1.38	2.00
40995	1/4" F-1/4" M Drive, Locking	0.50	1.78
45195	3/8" Drive, Chrome, Locking	0.50	1.78

No. 4506

5 Piece, Chrome Adapter Set Includes:

PART NO.	SIZE	PART NO.	SIZE
385	1/4" F-3/8" M Drive	407	1/2" F-3/4" M Drive
384	3/8" F-1/4" M Drive	451	3/8" F-1/2" M Drive
401	1/2" F-3/8" M Drive		

Packaged on a rail.



No. 4518

8 Piece, Chrome Universal/Adapter Set Includes:

PART NO.	DESCRIPTION	PART	DESCRIPTION
385	1/4" F-3/8" M Drive, Adapter	451	3/8" F-1/2" M Drive, Adapter
384	3/8" F-1/4" M Drive, Adapter	40990	1/4" Drive Universal Joint
401	1/2" F-3/8" M Drive, Adapter	45190	3/8" Drive Universal Joint
407	1/2" F-3/4" M Drive, Adapter	40190	1/2" Drive Universal Joint

Packaged on a rail.

No. 4010

9 Piece, Universal/Adapter Set Includes:

PART NO.	DESCRIPTION	PART NO.	SIZE
33990	3/8" Impact Universal	384	3/8" F-1/4" M Drive, Adapter
34990	1/2" Impact Universal	451	3/8" F-1/2" M Drive, Adapter
40990	1/4" Chrome Universal	401	1/2" F-3/8" M Drive, Adapter
45190	3/8" Chrome Universal	407	1/2" F-3/4" M Drive Adapter
385	1/4" F-3/8" M Drive Adapter		

Plastic molded plastic case.





No. 4010

9 Piece, Impact Universal/Adapter Set Includes:

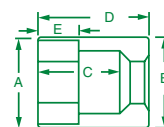
PART NO.	DESCRIPTION	PART NO.	DESCRIPTION
33990	3/8" Impact Universal	384	3/8"F-1/4"M Drive, Adapter
34990	1/2" Impact Universal	451	3/8"F-1/2"M Drive, Adapter
40990	1/4" Chrome Universal	401	1/2"F-3/8"M Drive, Adapter
45190	3/8" Chrome Universal	407	1/2"F-3/4"M Drive Adapter
385	1/4"F-3/8"M Drive Adapter		

Packaged in a molded plastic case.

Impact Utility Socket

For Buffalo Covers

Designed specifically for use on Tamper-Proof Buffalo Covers used by water and gas utility companies.



5 Point, 1/2" Drive, Impact Utility Socket

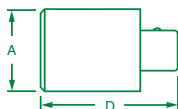
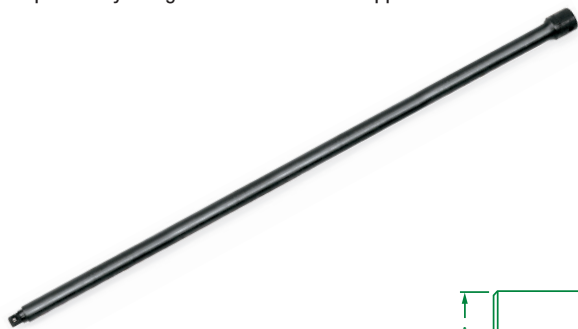
PART NO.	HEX SIZE	A	B	C	D	E
34205	13/16"	1.13	1.13	0.81	2.00	0.81

IMPACT SOCKETS

Impact Extension Adapters

Versatility and Access

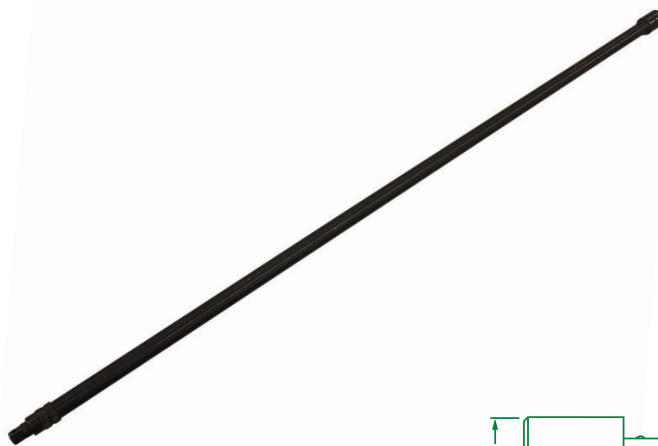
Extension adapters combine the versatility provided by an adapter with the accessibility provided by an extension. No. 46174 and No. 46175 are specifically designed for transmission applications.



Impact Extension Adapters

PART NO.	SIZE	RING	PIN	A	D
46174	1/2"F-3/8"M	—	—	1.00	22.60
46175	1/2"F-3/8"M	—	—	1.00	36.00
85607	1"F-3/4"M	85341	85541	2.00	6.06

Ring and pin sold separately.



Locking Impact Extension Adapters

PART NO.	SIZE	A	D
46177	1/2"F-3/8"M	0.71	24.00
46178	1/2"F-3/8"M	0.71	33.00

