



## No. 4010

### 9 Piece, Impact Universal/Adapter Set Includes:

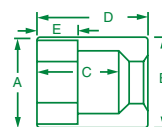
PART NO.	DESCRIPTION	PART NO.	DESCRIPTION
<b>33990</b>	3/8" Impact Universal	<b>384</b>	3/8"F-1/4"M Drive, Adapter
<b>34990</b>	1/2" Impact Universal	<b>451</b>	3/8"F-1/2"M Drive, Adapter
<b>40990</b>	1/4" Chrome Universal	<b>401</b>	1/2"F-3/8"M Drive, Adapter
<b>45190</b>	3/8" Chrome Universal	<b>407</b>	1/2"F-3/4"M Drive Adapter
<b>385</b>	1/4"F-3/8"M Drive Adapter		

Packaged in a molded plastic case.

## Impact Utility Socket

### For Buffalo Covers

Designed specifically for use on Tamper-Proof Buffalo Covers used by water and gas utility companies.



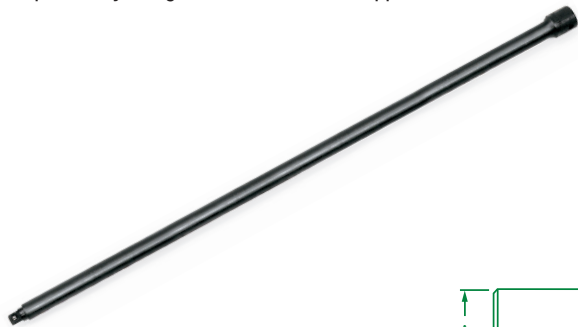
### 5 Point, 1/2" Drive, Impact Utility Socket

PART NO.	HEX SIZE	A	B	C	D	E
<b>34205</b>	13/16"	1.13	1.13	0.81	2.00	0.81

## Impact Extension Adapters

### Versatility and Access

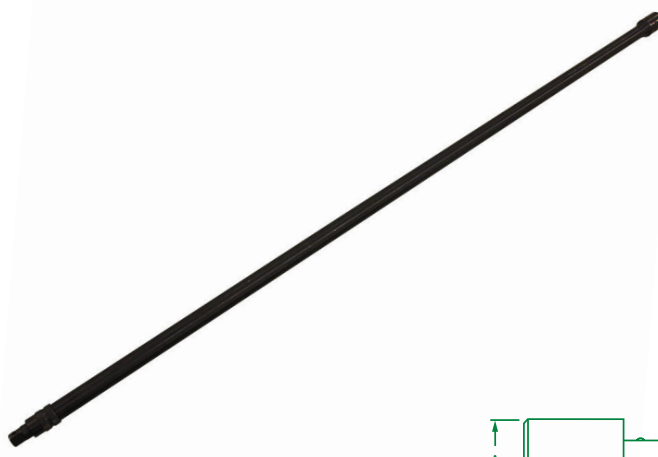
Extension adapters combine the versatility provided by an adapter with the accessibility provided by an extension. No. 46174 and No. 46175 are specifically designed for transmission applications.



### Impact Extension Adapters

PART NO.	SIZE	RING	PIN	A	D
<b>46174</b>	1/2"F-3/8"M	—	—	1.00	22.60
<b>46175</b>	1/2"F-3/8"M	—	—	1.00	36.00
<b>85607</b>	1"F-3/4"M	<b>85341</b>	<b>85541</b>	2.00	6.06

Ring and pin sold separately.



### Locking Impact Extension Adapters

PART NO.	SIZE	A	D
<b>46177</b>	1/2"F-3/8"M	0.71	24.00
<b>46178</b>	1/2"F-3/8"M	0.71	33.00

