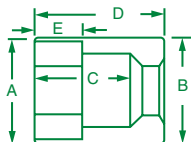


Standard Impact Sockets

high visibility



1/2" Drive, 6 Point Standard Metric Impact Sockets

PART NO.	HEX SIZE	A	B	C	D	E
34058	8mm	0.57	1.00	0.61	1.53	0.33
34059	9mm	0.63	1.00	0.61	1.53	0.25
34060	10mm	0.67	1.00	0.60	1.53	0.33
34061	11mm	0.73	1.00	0.60	1.53	0.33
34062	12mm	0.75	1.00	0.61	1.53	0.38
34063	13mm	0.79	1.00	0.58	1.53	0.38
34064	14mm	0.87	1.00	0.62	1.53	0.42
34065	15mm	0.94	1.00	0.62	1.53	0.42
34066	16mm	1.00	1.00	0.86	1.53	0.47
34067	17mm	1.00	1.00	0.86	1.53	0.50
34068	18mm	1.08	1.00	0.86	1.53	0.50
34069	19mm	1.13	1.13	0.86	1.53	0.50
34070	20mm	1.17	1.17	0.86	1.53	0.50

PART NO.	HEX SIZE	A	B	C	D	E
34071	21mm	1.19	1.17	0.89	1.53	0.48
34072	22mm	1.28	1.17	1.00	1.53	0.59
34073	23mm	1.31	1.17	1.10	1.75	0.59
34074	24mm	1.38	1.17	1.13	1.75	0.72
34075	25mm	1.49	1.49	1.31	1.96	0.76
34076	26mm	1.50	1.50	1.31	1.75	0.72
34077	27mm	1.50	1.50	1.31	1.96	0.72
34078	28mm	1.56	1.50	1.34	1.96	0.76
34079	29mm	1.63	1.50	1.31	1.96	0.76
34080	30mm	1.69	1.50	1.34	1.96	0.76
34082	32mm	1.75	1.50	1.31	1.96	0.76
34086	36mm	1.94	1.50	1.31	1.96	0.76
34096	46mm	2.69	1.92	1.64	2.63	1.64

IMPACT SOCKETS



No. 4034

12 Piece, 1/2" Drive, 6 Point, Standard Metric Impact Socket Set Includes:

PART NO.	SIZE	PART NO.	SIZE	PART NO.	SIZE	PART NO.	SIZE
34058	8mm	34061	11mm	34064	14mm	34067	17mm
34059	9mm	34062	12mm	34065	15mm	34068	18mm
34060	10mm	34063	13mm	34066	16mm	34069	19mm

Packaged on a rail.



No. 4036

17 Piece, 1/2" Drive, 6 Point, Standard Metric Impact Socket Set Includes:

PART NO.	SIZE	PART NO.	SIZE	PART NO.	SIZE	PART NO.	SIZE
34058	8mm	34063	13mm	34068	18mm	34073	23mm
34059	9mm	34064	14mm	34069	19mm	34074	24mm
34060	10mm	34065	15mm	34070	20mm		
34061	11mm	34066	16mm	34071	21mm		
34062	12mm	34067	17mm	34072	22mm		

Packaged on a rail.