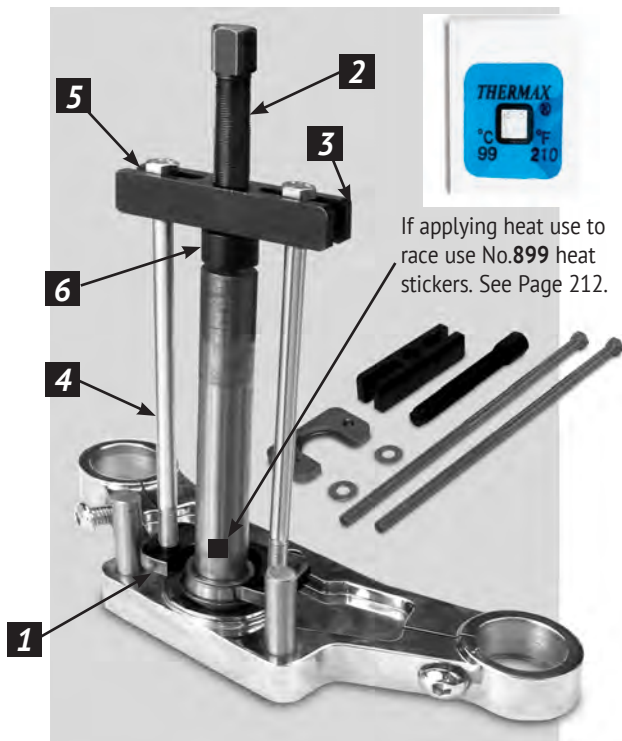


FRONT FORK & NECK TOOLS



FORK STEM BEARING REMOVER

Use this tool to remove the lower fork stem (Triple Clamp) tapered bearing. *For more details see No.1414-IS instructions.*

No.1414 - Use on all lower fork stems that use a H-D® No.48300-60 style bearing. Order JIMS® Hard End Cap, No.1048 below when using on early XL 1978-81.

PARTS AVAILABLE SEPARATELY

NO.	QTY.	DESCRIPTION	PART NO.
1	1	BEARING REMOVER	1414-1
2	2	SCREW	1024
3	1	PULLER BAR	2013
4	2	3/8" - 16 X 11" BOLTS	1717
5	2	3/8" SAE WASHER	2031
6	1	HARDENED TIP	1025
7	1	INSTRUCTION SHEET	1414-IS

HARD CAP

This hard cap will protect the 3/4" fork stem when using the above tool No. 1414 on Sportsters. Also works on 1955 to 2006 Big Twin sprocket shafts, when pressing flywheels out of engine cases. See page 184. *For more details see No.1048-IS instruction sheet.*

No.1048 - Use on 1978-1981 Sportsters



FRONT FORK COMPRESSOR TOOL

Use to compress the fork springs in cartridge style shocks when servicing or rebuilding. The compressor can be mounted in a vise for easy hands free servicing. Also includes an adapter for FL forks to eliminate direct contact with spring coil and a special rod to pull up the fork damper rod. *For more details see No.1776-IS instructions.*

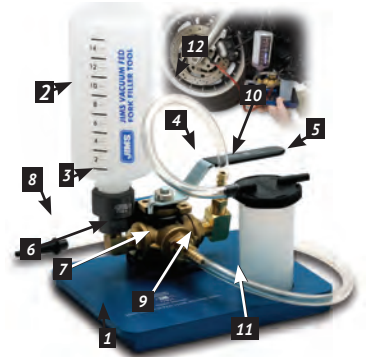
PARTS AVAILABLE SEPARATELY

NO.	QTY.	DESCRIPTION	PART NO.
1	1	MAIN BODY	1776-11
2	1	SLIDE, MAIN BODY	1776-10
3	1	FL ADAPTER	1776-3
4	1	DAMPER ROD EXTENTIONS	1776-9
5	1	SPECIAL ALLEN SCREW	1776-6
6	1	INSTRUCTION SHEET	1776-IS

No.1776 - Use on all cartridge-style shocks fork assemblies.

VACUUM FED FORK FILLING TOOL

Changing the fork fluid on models with fairings can be intimidating and take hours. This tool eliminates the need to remove the fairing on all touring bikes to change the fork oil. It's like magic! With this tool it should take about 30 minutes to perform the service compared to 2.2 hours without it. Use on all common damper tube type fork assemblies. This tool is not for use on motorcycles using cartridge type forks or inverted fork assemblies. This tool is designed for use in conjunction with a Mityvac® tool No. 741, which is available separately. *For more details and parts available seperately see No. 740-IS instructions.*



No. 740 - Use on all common damper tube type fork assemblies with drain screws. (Not for use on motorcycles using cartridge type forks or inverted fork assemblies.)

No. 741 - Mityvac Hand Vacuum Pump kit. (Sold separately)

