

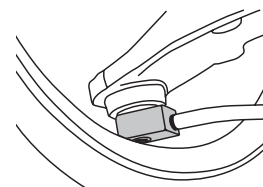
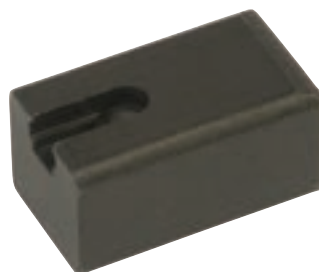
21600 RIGHT ANGLE GREASE GUN ADAPTER

Reach Inaccessible Grease Zerks.

Attach to any standard grease gun to reach confined areas. For Chrysler, Dodge and Plymouth FWD ball joints and other tight places.

21600 Right Angle Grease Gun Adapter. Skin-packed. Shipping wt. 5 oz.

21620 Piston



34550 HANDY PACKER[®] BEARING PACKER

Quickly Flushes Out Old Grease and Repacks Bearings with Less Mess.

The Handy Packer works on bearings up to 3-1/2" O.D. The grease stays in the tool cavity, not on your hands. To pack a bearing, place the bearing on the piston. Press down on the cap until the old grease is forced out and the new grease shows on top of the bearing.

34550 Handy Packer Bearing Packer. Clam Shell. Shipping wt. 1 lb. 4 oz.



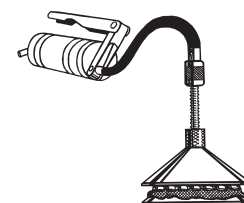
U.S. Pat No. 6,520,292

65250 UNIVERSAL BEARING PACKER

Fast, Efficient, Thorough.

Simply place the bearing between the plastic cones, tighten, and apply grease through the fitting on the end of the threaded shaft. Forces out old grease and evenly injects fresh grease. Cone diameter is 4-1/2".

65250 Universal Bearing Packer. Skin-packed. Shipping wt. 7 oz.

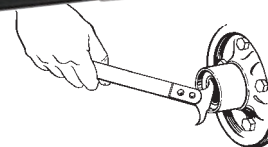


56750 SEAL PULLER

For Oil and Grease Seals.

Simply insert the tip of the tool behind the oil or grease seal, press and pull. Leverage works for you. Two size tips reach in and fit nearly all seal applications.

56750 Seal Puller. Skin-packed. Shipping wt. 15 oz.

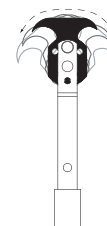


56650 ADJUSTABLE SEAL PULLER

Head Adjusts to 5 Positions.

Two hook sizes easily remove most oil and grease seals. Where clearance is a problem, remove the pin to reposition the head. The adjustable head works great on front wheel drive transaxles. Also works on front crankshaft seals without removing the radiator.

56650 Adjustable Seal Puller. Skin-packed. Shipping wt. 15 oz.



U.S. Pat No. 7,039,993

56920 LIMITED ACCESS SEAL PULLER

Use With 3/8" Drive for Hard-to-reach Oil and Grease Seals.

Simply insert hook behind seal and pull. Two hook sizes to fit most oil and grease seals. Can also be used with a breaker bar for extra reach or leverage. If the puller tips wear, sharpen on a grinding wheel.

56920 Limited Access Seal Puller. Skin-packed. Shipping wt. 3 oz.

