

MTO Engineered Class Cast Iron Sprockets



Cast Split Sprockets

Hunting Tooth Sprockets

Rivetless Chain Sprocket

Drag Chain Sprockets

- Plain
- Flanged

Traction Wheels

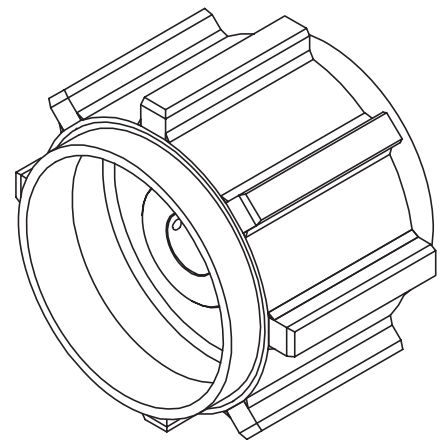
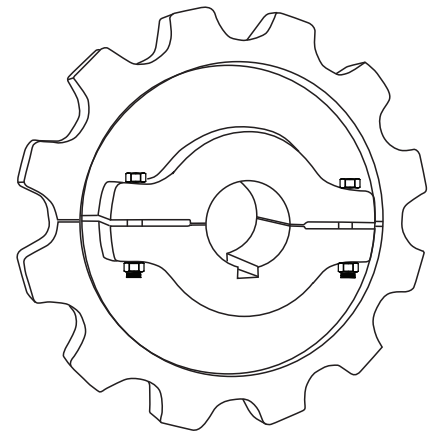
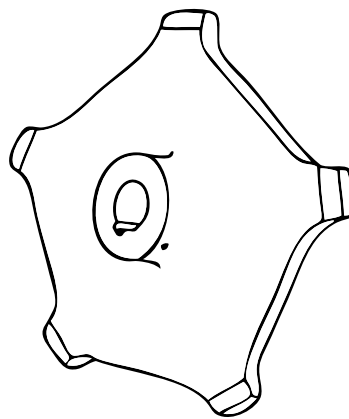
- Plain
- Flanged

Plate Body Sprockets

Chain Saver Rim Sprockets

Adjustable Hub Sprockets

Chilled Rim Sprockets

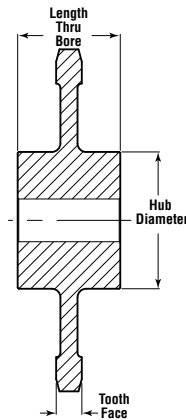


Sprockets Available to fit Standard Chain Sizes

55	103	H121	197	678	856	998
D60	H104	SD121	348	698	859	1030
62	W-106	WD-122	348	CS720S	F912R	1036
67	S-110	WD-123	458	720S	E922	1113
78	WD-110	WD-124	468	730	F922	1120
W-78	111SP	130	WD-480	A730	925R	1131
94R	111	132	483	CS730	933	F1222
95R	WD-112	183	520	823	951	2124
102B	WD-116	188	531	825	D963R	2180
H102	WD-119	194	625R	830	E963R	4850
102.5	WD-120	196	667	844	F963R	9250

Not all sprockets fit all chain sizes, see factory for availability.

Cast Iron Sprocket



H104 CAST TOOTH SPROCKETS — PITCH 6.000

FOR CHAINS NO.: 6104, H104, WDH104

Tooth Face at Pitch Line: 4.00 — Roller Diameter: 1.50

Number of Teeth	Catalog Number	Pitch Diameter	Style	Hub Diameter	Length Thru Bore	Max. Bore	Approx. Weight (lb)
5	CWD104C5	10.21	C	6.00	4.75	4.00	80.0
6	CWD104C6	12.00	C	6.00	4.75	4.00	91.0
7	CWD104C7	13.83	C	6.00	4.75	4.00	120.0
7	CWD104C7*		C	6.00	4.75	4.00	116.0
8	CWD104C8	15.68	C	7.50	5.00	5.00	122.0
8	CWD104C8*		C	7.50	5.00	5.00	137.0
9	CWD104C9	17.54	C	7.50	5.00	5.00	152.0
9	CWD104C9*		C	7.50	5.00	5.00	167.0
10	CWD104C10	19.42	C	8.00	5.50	6.00	160.0
10	CWD104C10*		C	8.00	5.50	6.00	175.0
11	CWD104C11	21.30	C	8.00	5.50	6.00	172.0
12	CWD104C12	23.18	C	8.00	5.50	6.00	185.0
13	CWD104C13	25.07	C	8.00	5.50	6.00	198.0

*Available Flanged - Consult Factory.

S110 CAST TOOTH SPROCKETS — PITCH 6.000

FOR CHAINS NO.: 6110, C110, C110, ER110, C110C, RR542, SBS110, SS110, WH110, WS110

Tooth Face at Pitch Line: 1.875 — Roller Diameter: 1.250

Number of Teeth	Catalog Number	Pitch Diameter	Style	Hub Diameter	Length Thru Bore	Max. Bore	Approx. Weight (lb)
6	C110C6	12.00	C	6.00	4.00	3.94	63.0
7	C110C7	13.84	C	7.00	4.00	4.50	68.0
8	C110C8	15.68	C	7.00	5.00	4.50	76.0
9	C110C9	17.54	C	7.00	5.00	4.50	83.0
10	C110C10	19.42	C	7.50	5.00	5.00	88.0
11	C110C11	21.30	C	7.50	5.00	5.00	121.0
12	C110C12	23.18	C	7.50	5.00	5.00	131.0
13	C110C13	25.07	C	7.50	5.00	5.00	152.0
14	C110C14	26.96	C	7.50	5.00	5.00	160.0
15	C110C15	28.86	C	7.50	5.00	5.00	170.0
16	C110C16	30.76	C	8.00	6.00	6.00	181.0
18	C110C18	34.55	C	8.00	6.00	6.00	206.0
19	C110C19	36.46	C	10.00	6.00	6.00	214.0
24	C110C24	45.97	C	10.00	8.00	8.00	340.0

W106 CAST TOOTH SPROCKETS — PITCH 6.000

FOR CHAINS NO.: W106 WH106HD, WH110, WR106, WR106HD

Tooth Face at Pitch Line: 1.50 — Roller Diameter: 1.25

Number of Teeth	Catalog Number	Pitch Diameter	Style	Hub Diameter	Length Thru Bore	Max. Bore	Approx. Weight (lb)
5	C106C5CR	10.15	C	6.00	4.75	4.00	30.0
8	C106C8CR	15.68	C	7.00	4.75	5.00	85.0
9	C106C9CR	17.54	C	7.00	4.75	5.00	100.0

WD110 CAST TOOTH SPROCKETS — PITCH 6.000

FOR CHAINS NO.: 6110 (DRAG), H-110, H110, WD110, WD113, WDH2210, WHD110, WS110 (PT-C), WSD110

Tooth Face at Pitch Line: 8.875 — Roller Diameter: 1.500

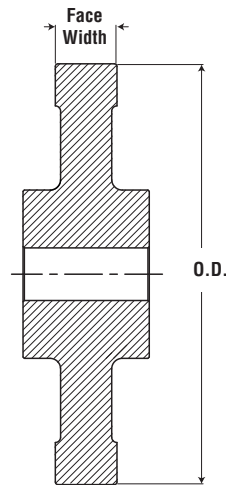
Number of Teeth	Catalog Number	Pitch Diameter	Style	Hub Diameter	Length Thru Bore	Max. Bore	Approx. Weight (lb)
5	CWD110C5	10.15	C	6.00	3.00	4.00	120.0
6	CWD110C6*	12.00	C	6.00	3.00	4.00	129.0
7	CWD110C7*	13.84	C	7.00	3.00	5.00	172.0
8	CWD110C8*	15.68	C	8.00	3.50	6.00	202.0
9	CWD110C9*	17.54	C	8.00	3.50	6.00	240.0
10	CWD110C10*	19.42	C	8.00	3.50	6.00	253.0
11	CWD110C11*	21.30	C	8.00	4.00	6.00	265.0
12	CWD110C12*	23.18	C	8.00	4.00	6.00	352.0
15	CWD110C15	28.86	C	8.00	4.00	6.00	610.0

*Available Flanged - Consult Factory.

NOTE: Weights and Dimensions are approximate. Please consult *Martin* for max hub information. All Cast Sprockets available as Split Sprockets. CHAINSAVER rims available on request.

HEAT TREAT available upon request.

Traction Wheels



Chain: H104

F = 4.00

Part Number	Outside Diameter	Face Width	Drum Width	Weight Each (lb)
C10.5TW	10.50	4.00	12.00	125.0
C12.38TW	12.38	4.00	12.00	145.0
C14.0TW	14.00	4.00	12.00	170.0
C16.0TW	16.00	4.00	12.00	205.0
C17.75TW	17.75	4.00	12.00	250.0
C19.75TW	19.75	4.00	12.00	305.0
C20.0TW	20.03	4.00	12.00	345.0

Chain: H116

F = 13.00

Part Number	Outside Diameter	Face Width	Drum Width	Weight Each (lb)
C16.88TW	16.88	13.0	20.5	395.0
C19.0TW	19.00	13.0	20.5	485.0
C21.75TW	21.75	13.0	20.5	550.0

Chain: H110

F = 8.88

Part Number	Outside Diameter	Face Width	Drum Width	Weight Each (lb)
C10.25TW	10.25	8.88	16.38	175.0
C14.0TW	14.00	8.88	16.38	250.0
C15.0TW	15.88	8.88	16.38	290.0
C17.75TW	17.75	8.88	16.38	335.0
C19.63TW	19.63	8.88	16.38	365.0

Chain: H118

F = 13.00

Part Number	Outside Diameter	Face Width	Weight Each (lb)
C13.88TW	13.88	13.00	495.0
C16.5TW	16.50	13.00	560.0

Chain: C111

F = 2.25

Part Number	Outside Diameter	Face Width	Weight Each (lb)
C9.5TW	9.50	2.25	50.0
C14.5TW	14.56	2.25	85.0
C15.5TW	15.50	2.25	91.0
C18.0TW	18.00	2.25	105.0
C20.0TW	20.00	2.25	135.0
C22.0TW	22.00	2.25	143.0
C23.0TW	23.00	2.25	146.0
C23.75TW	23.75	2.25	149.0
C26.0TW	26.00	2.25	165.0
C29.5TW	29.50	2.25	198.0
C30.75TW	30.75	2.25	210.0

Chain: C132

F = 2.75

Part Number	Outside Diameter	Face Width	Drum Width	Weight Each (lb)
C13.0TW	13.00	2.75		120.0
C13.75TW	13.75	2.75		124.0
C16.0TW	16.00	2.75		128.0
C16.25TW	16.25	2.75	14.00	510.0
C17.0TW	17.00	2.75		138.0
C18.0TW	18.00	2.75		147.0
C18.25TW	18.25	2.75	14.00	570.0
C20.25TW	20.25	2.75	14.00	620.0
C21.63TW	21.63	2.75		186.0
C22.0TW	22.00	2.75		190.0
C24.0TW	24.00	2.75		205.0
C26.19TW	26.19	2.75		210.0
C27.75TW	27.75	2.75		225.0
C30.0TW	30.00	2.75		280.0

Chain: H112

F = 9.00

Part Number	Outside Diameter	Face Width	Drum Width	Weight Each (lb)
C16.75TW	16.75	9.00	16.5	200.0
C19.25TW	19.25	9.00	16.5	230.0

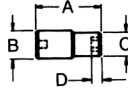
Unit Number H480

F = 11.13

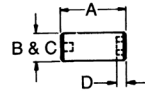
Part Number	Outside Diameter	Face Width	Drum Width	Weight Each (lb)
C13.88TW	13.88	11.13	22.00	440.0
C16.25TW	16.25	11.13	22.00	510.0
C18.75TW	18.75	11.13	22.00	540.0
C21.13TW	21.13	11.13	22.00	600.0
C23.75TW	23.75	11.13	22.00	630.0



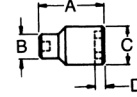
3/4" Drive Sockets & Attachments – Chrome



Type I



Type II



Type III

3/4" Square Drive 12 Point Standard Chrome

Opening	Type	Length	Drive End	Opening End	Minimum Depth	Weight Each (lb)	Part Number	Std. Pkg. Qty.	Opening
		A	B	C	D		Chrome		
3/4	I	2	1-19/64	1-13/64	1/2	.40	H1224	5	3/4
13/16	II	2	—	1-19/64	1/2	.41	H1226	5	13/16
7/8	II	2	—	1-11/32	1/2	.35	H1228	5	7/8
15/16	II	2	—	1-3/8	35/64	.43	H1230	5	15/16
1	II	2-1/16	—	1-7/16	35/64	.50	H1232	5	1
1-1/16	III	2-1/16	1-7/16	1-9/16	5/8	.57	H1234	5	1-1/16
1-1/8	III	2-1/8	1-7/16	1-5/8	21/32	.65	H1236	5	1-1/8
1-3/16	III	2-1/16	1-7/16	1-11/16	21/32	.59	H1238	5	1-3/16
1-1/4	III	2-3/16	1-9/16	1-13/16	3/4	.78	H1240	5	1-1/4
1-5/16	III	2-1/4	1-9/16	1-7/8	49/64	.79	H1242	3	1-5/16
1-3/8	III	2-1/4	1-9/16	1-7/8	25/32	.69	H1244	3	1-3/8
1-7/16	III	2-5/16	1-9/16	2-1/64	7/8	.87	H1246	3	1-7/16
1-1/2	III	2-5/16	1-35/64	2-3/32	55/64	.94	H1248	3	1-1/2
1-9/16	III	2-5/16	1-19/32	2-3/32	55/64	.91	H1250	3	1-9/16
1-5/8	III	2-3/8	1-19/32	2-5/32	1	.98	H1252	3	1-5/8
1-11/16	III	2-7/16	1-5/8	2-7/32	1	1.00	H1254	3	1-11/16
1-3/4	III	2-1/2	1-21/32	2-5/16	1-3/32	1.23	H1256	3	1-3/4
1-13/16	III	2-13/16	1-3/4	2-3/8	1-1/8	1.31	H1258	3	1-13/16
1-7/8	III	2-7/8	1-3/4	2-15/32	1-1/8	1.33	H1260	3	1-7/8
2	III	3	1-3/4	2-39/64	1-7/32	1.54	H1264	1	2
2-1/16	III	3-1/32	1-15/16	2-23/32	1-7/32	2.13	H1266	1	2-1/16
2-1/8	III	3-1/16	1-15/16	2-55/64	1-7/32	2.19	H1268	1	2-1/8
2-3/16	III	3-1/16	1-15/16	2-55/64	1-3/8	2.00	H1270	1	2-3/16
2-1/4	III	3-3/16	2	3-1/16	1-3/8	2.50	H1272	1	2-1/4
2-3/8	III	3-1/4	2	3-1/16	1-3/8	2.16	H1276	1	2-3/8

Item	3/4" Attachment	Description	Weight Each (lb)	Chrome Part No.	Black Part No.	Std. Pkg. Qty.
Flexible Handle		21-5/8" Flexible Hdl.	5.63	H41A	—	1
		21-5/8" Flexible Hdl.	5.63	—	BLKH41A	1
Ratchet		20° Rev. Ratchet	5.38	H51	—	1
Repair Kit		Ratchet Repair Kit	1	H51RU	—	1
Ratchet		24° Rev. Ratchet	5.38	—	BLKH51	1
Repair Kit		Ratchet Repair Kit	1	—	BLKH51RU	1
Sliding T		17-1/2" Sliding Hdl.	2.45	H20A	—	1
Extension		3-1/2" Extension	1.27	H104	—	1
		8" Extension	2.25	H110	—	1
		16" Extension	3.13	H115	—	1
Universal		U-Joint	1.08	H140	—	1

3/4" Drive Socket Sets – Chrome



H12K			
3/4" DRIVE 12 POINT STANDARD SOCKET SET			
7/8" 12 pt. Socket	H1228	1-7/16" 12 pt. Socket	H1246
15/16" 12 pt. Socket	H1230	1-1/2" 12 pt. Socket	H1248
1-1/16" 12 pt. Socket	H1234	1-5/8" 12 pt. Socket	H1252
1-1/8" 12 pt. Socket	H1236	Rev. Ratchet	H51
1-1/4" 12 pt. Socket	H1240	8" Extension	H110
1-5/16" 12 pt. Socket	H1242	Metal Box	96A
1-3/8" 12 pt. Socket	H1244		



H17K			
3/4" DRIVE 12 POINT STANDARD SOCKET SET			
7/8" 12 pt. Socket	H1228	1-5/8" 12 pt. Socket	H1252
15/16" 12 pt. Socket	H1230	1-3/4" 12 pt. Socket	H1256
1-1/16" 12 pt. Socket	H1234	1-13/16" 12 pt. Socket	H1258
1-1/8" 12 pt. Socket	H1236	1-7/8" 12 pt. Socket	H1260
1-1/4" 12 pt. Socket	H1240	2" 12 pt. Socket	H1264
1-5/16" 12 pt. Socket	H1242	Rev. Ratchet	H51
1-3/8" 12 pt. Socket	H1244	8" Extension	H110
1-7/16" 12 pt. Socket	H1246	16" Extension	H115
1-1/2" 12 pt. Socket	H1248	Metal Box	237



H20K			
3/4" DRIVE 12 POINT STANDARD SOCKET SET			
7/8" 12 pt. Socket	H1228	1-11/16" 12 pt. Socket	H1254
15/16" 12 pt. Socket	H1230	1-3/4" 12 pt. Socket	H1256
1" 12 pt. Socket	H1232	1-13/16" 12 pt. Socket	H1258
1-1/16" 12 pt. Socket	H1234	1-7/8" 12 pt. Socket	H1260
1-1/8" 12 pt. Socket	H1236	2" 12 pt. Socket	H1264
1-1/4" 12 pt. Socket	H1240	Rev. Ratchet	H51
1-5/16" 12 pt. Socket	H1242	3-1/2" Extension	H104
1-3/8" 12 pt. Socket	H1244	8" Extension	H110
1-7/16" 12 pt. Socket	H1246	2-15/8" Flexible Hdle.	H41A
1-1/2" 12 pt. Socket	H1248	Metal Box	237
1-5/8" 12 pt. Socket	H1252		



H22K			
3/4" DRIVE 12 POINT STANDARD SOCKET SET			
7/8" 12 pt. Socket	H1228	1-11/16" 12 pt. Socket	H1254
15/16" 12 pt. Socket	H1230	1-3/4" 12 pt. Socket	H1256
1" 12 pt. Socket	H1232	1-13/16" 12 pt. Socket	H1258
1-1/16" 12 pt. Socket	H1234	1-7/8" 12 pt. Socket	H1260
1-1/8" 12 pt. Socket	H1236	2" 12 pt. Socket	H1264
1-1/4" 12 pt. Socket	H1240	Rev. Ratchet	H51
1-5/16" 12 pt. Socket	H1242	3-1/2" Extension	H104
1-3/8" 12 pt. Socket	H1244	8" Extension	H110
1-7/16" 12 pt. Socket	H1246	16" Extension	H115
1-1/2" 12 pt. Socket	H1248	Universal Joint	H140
1-9/16" 12 pt. Socket	H1250	Metal Box	237
1-5/8" 12 pt. Socket	H1252		



Tool Display Boards



3/4" Chrome

BD19		QTY.
H20A	ATTACH,3/4,T-SLIDE	1
H41A	ATTACH,3/4,F-HDL,21-5/8	1
H51	RATCH,3/4,REV,24	1
H104	ATTACH,3/4,EXT,3-1/2	1
H110	ATTACH,3/4,EXT,8	1
H115	ATTACH,3/4,EXT,16	1
H140	ATTACH,3/4,UNIVERSAL	1
H1224	SKT,3/4,12PT,STD,3/4	1
H1226	SKT,3/4,12PT,STD,13/16	1
H1228	SKT,3/4,12PT,STD,7/8	1
H1230	SKT,3/4,12PT,STD,15/16	1
H1232	SKT,3/4,12PT,STD,1	1
H1234	SKT,3/4,12PT,STD,1-1/16	1
H1236	SKT,3/4,12PT,STD,1-1/8	1
H1238	SKT,3/4,12PT,STD,1-3/16	1
H1240	SKT,3/4,12PT,STD,1-1/4	1
H1242	SKT,3/4,12PT,STD,1-5/16	1
H1244	SKT,3/4,12PT,STD,1-3/8	1
H1246	SKT,3/4,12PT,STD,1-7/16	1
H1248	SKT,3/4,12PT,STD,1-1/2	1
H1250	SKT,3/4,12PT,STD,1-9/16	1
H1252	SKT,3/4,12PT,STD,1-5/8	1
H1254	SKT,3/4,12PT,STD,1-11/16	1
H1256	SKT,3/4,12PT,STD,1-3/4	1
H1258	SKT,3/4,12PT,STD,1-13/16	1
H1260	SKT,3/4,12PT,STD,1-7/8	1
H1264	SKT,3/4,12PT,STD,2	1
H1266	SKT,3/4,12PT,STD,2 1/16	1
H1268	SKT,3/4,12PT,STD,2 1/7	1
H1270	SKT,3/4,12PT,STD,2 3/16	1
H1272	SKT,3/4,12PT,STD,2 1/4	1
H1276	SKT,3/4,12PT,STD,2 3/8	1



3/4" Impact

BD20		QTY.	BD20		QTY.
6107	3/4,EXT,7	1	6658	SKT,3/4,6P,STD,IMP,1-13/16	1
6110	3/4,EXT,10	1	6660	SKT,3/4,6P,STD,IMP,1-7/8	1
64A	3/4,ADAP,3/4F-1/2M	1	6662	SKT,3/4,6P,STD,IMP,1-15/16	1
67	3/4,ADAP,3/4F-1M	1	6664	SKT,3/4,6P,STD,IMP,2	1
6140A	3/4,IMP,UNIVERSAL	1	16624	SKT,3/4,6P,DP,IMP,3/4	1
6620	SKT,3/4,6P,STD,IMP,5/8	1	16626	SKT,3/4,6P,DP,IMP,13/16	1
6622	SKT,3/4,6P,STD,IMP,11/16	1	16628	SKT,3/4,6P,DP,IMP,7/8	1
6624	SKT,3/4,6P,STD,IMP,3/4	1	16630	SKT,3/4,6P,DP,IMP,15/16	1
6626	SKT,3/4,6P,STD,IMP,13/16	1	16632	SKT,3/4,6P,DP,IMP,1	1
6628	SKT,3/4,6P,STD,IMP,7/8	1	16634	SKT,3/4,6P,DP,IMP,1-1/16	1
6630	SKT,3/4,6P,STD,IMP,15/16	1	16636	SKT,3/4,6P,DP,IMP,1-1/8	1
6632	SKT,3/4,6P,STD,IMP,1	1	16638	SKT,3/4,6P,DP,IMP,1-3/16	1
6634	SKT,3/4,6P,STD,IMP,1-1/16	1	16640	SKT,3/4,6P,DP,IMP,1-1/4	1
6636	SKT,3/4,6P,STD,IMP,1-1/8	1	16642	SKT,3/4,6P,DP,IMP,1-5/16	1
6638	SKT,3/4,6P,STD,IMP,1-3/16	1	16644	SKT,3/4,6P,DP,IMP,1-3/8	1
6640	SKT,3/4,6P,STD,IMP,1-1/4	1	16646	SKT,3/4,6P,DP,IMP,1-7/16	1
6642	SKT,3/4,6P,STD,IMP,1-5/16	1	16648	SKT,3/4,6P,DP,IMP,1-1/2	1
6644	SKT,3/4,6P,STD,IMP,1-3/8	1	16650	SKT,3/4,6P,DP,IMP,1-9/16	1
6646	SKT,3/4,6P,STD,IMP,1-7/16	1	16652	SKT,3/4,6P,DP,IMP,1-5/8	1
6648	SKT,3/4,6P,STD,IMP,1-1/2	1	16654	SKT,3/4,6P,DP,IMP,111/16	1
6650	SKT,3/4,6P,STD,IMP,1-9/16	1	16656	SKT,3/4,6P,DP,IMP,1-3/4	1
6652	SKT,3/4,6P,STD,IMP,1-5/8	1	16660	SKT,3/4,6P,DP,IMP,1-7/8	1
6654	SKT,3/4,6P,STD,IMP,1-11/16	1	16664	SKT,3/4,6P,DP,IMP,2	1
6656	SKT,3/4,6P,STD,IMP,1-3/4	1			

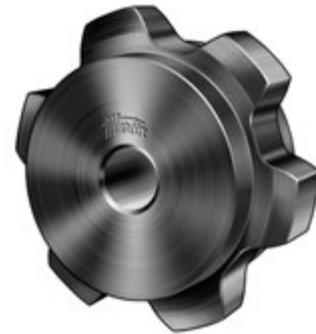


Mill Duty Plastic Sprockets



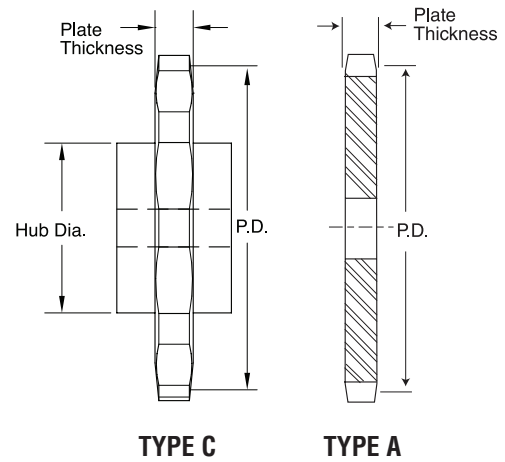
Mill Duty (also known as Agricultural Chain or AG Chain) Sprockets are machined from UHMW. These non-metallic sprockets are lighter in weight than standard steel sprockets. Non-metallic sprockets are also corrosion resistant, require little or no lubrication, and are generally more durable than traditional steel sprockets.

Martin offers Mill Duty Sprockets in all popular sizes as well as custom made-to-order sprockets. Standard sizes include 55 Series, 78 Series, 82 Series, and 132 Series. Sprockets can be manufactured in A, B, C. & D styles, as well as Split and special sprockets styles.



Sprockets Available to fit Standard Chain Sizes

25	95R	WD-120	458	CS730	D963R
32	102B	H121	468	823	E963R
42	H102	SD121	WD-480	825	F963R
45	102.5	WD-122	483	830	998
S51	103	WD-123	520	844	1030
51	H104	WD-124	531	856	1036
52	W-106	130	625R	859	1113
55	S-110	132	667	F912R	1120
D60	WD-110	183	678	E922	1131
62	111SP	188	698	F922	F1222
67	111	194	CS720S	925R	2124
78	WD-112	196	720S	933	2180
W-78	WD-116	197	730	951	4850
94R	WD-119	348	A730	B963R	9250



55 SERIES PLASTIC SPROCKETS FOR CHAINS: C55, CA550, CA555, 55, 16D

Type C — 1.631" Pitch

PLATE THICKNESS 0.625"
ROLLER DIAMETER 0.7187"

Type A

Number of Teeth	Catalog Number	Pitch Diameter	Type	Stock Bore	Max. Bore	Hub Diameter	LTB	Catalog Number	Type	Stock Bore
6	55C6NM	3.26	C	0.5	1	1.75	1.75	55A6NM	A	0.5
7	55C7NM	3.76	C	0.5	1	2	1.75	55A7NM	A	0.5
8	55C8NM	4.26	C	0.5	1.25	2.75	2	55A8NM	A	0.5
9	55C9NM	4.77	C	0.5	1.5	3	2.625	55A9NM	A	0.5
10	55C10NM	5.28	C	0.5	2	3.5	2	55A10NM	A	0.5
11	55C11NM	5.79	C	1	2.5	4	2.625	55A11NM	A	1
12	55C12NM	6.3	C	1	2.5	4	2.688	55A12NM	A	1
13	55C13NM	6.82	C	1	2.5	4	2.688	55A13NM	A	1
14	55C14NM	7.33	C	1	2.5	4	2.625	55A14NM	A	1
15	55C15NM	7.84	C	1	2.5	4	2.625	55A15NM	A	1
16	55C16NM	8.36	C	1	2.5	4	2.625	55A16NM	A	1
17	55C17NM	8.88	C	1	3	4.5	2.625	55A17NM	A	1
18	55C18NM	9.39	C	1	3	4.5	2.625	55A18NM	A	1
19	55C19NM	9.9	C	1	3	4.5	2.625	55A19NM	A	1
20	55C20NM	10.43	C	1	3.5	5	3.188	55A20NM	A	1
21	55C21NM	10.94	C	1	3.5	5	3.125	55A21NM	A	1
22	55C22NM	11.43	C	1	3.5	5	3.188	55A22NM	A	1
23	55C23NM	11.97	C	1	3.5	5	3.188	55A23NM	A	1
24	55C24NM	12.5	C	1	3.5	5	3.188	55A24NM	A	1