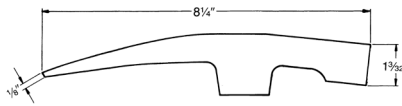




# Hammers

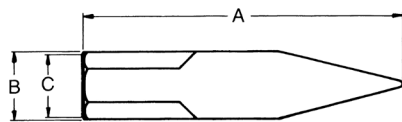
Only *Martin* Provides This Added Warranty —  
If a Hammer Head Should Loosen at Any Time,  
Return It for Handle Replacement or a New Hammer.

Always wear eye protection. A hammer blow should always be struck squarely.  
Avoid glancing blows. Never use hammers, punches or chisels with “mushroomed” heads.



## Brick Hammer

Head Weight	Overall Length	Replacement Handle	Weight With Handle (lb)	Industrial Black Head Finish	Std. Pkg. Qty.	Head Weight
				Part Number		
1-1/2 lb	11	HH173FG	2.0	173	6	1-1/2 lb



## Tinner's Riveting Hammer

Head Weight	Overall Length	Head Length	Head Width	Face Width	Replacement Handle	Weight With Handle (lb)	Industrial Black Head Finish	Std. Pkg. Qty.	Head Weight
		A	B	C			Part Number		
4 oz	9-1/4	3-11/16	9/16	15/32	HH50	.38	25G	6	4 oz
8 oz	11	4-1/4	3/4	21/32	HH53	.76	26G	6	8 oz
12 oz	13-1/2	4-3/4	29/32	25/32	HH801	1.1	27G	6	12 oz
1 lb	14	5-1/8	31/32	27/32	HH801	1.4	28G	6	1 lb

## Hickory Hammer Handles

Part Number	Std. Pkg. Qty.	Approx. Length	Use For
HH42A18	12	18	165 Body Hammer
HH42B	12	12	All Body Hammers (Except 165 & 155)
HH42BN	12	12	Hickory Handle for all other Body Hammers - New
HH45	12	16	Cross Peen and Double Face Eng. and 155
HH49	12	9-3/4	2 oz. Ball Peen
HH50	12	10	4 oz. Ball Peen/4 oz. Riveting
HH53	12	12	8 oz. Ball Peen/8 oz. Riveting
HH59	12	14-1/2	12 oz. Ball Peen
HH59	12	14-1/2	1 lb, 1-1/4 lb Ball Peen
HH66	12	16	1-1/2, 2 lb Ball Peen
HH69	12	17	2-1/2 lb Ball Peen
HH71	12	17	3 lb Ball Peen
HH92	12	10-1/2	All Hand Drilling
HH801	12	13-3/4	12 & 16 oz. Riveting and Settling
HH418	12	32	4 lb Sledge
HH6810	12	33	6, 8 & 10 lb Sledge
HH1216	12	35	12 & 16 lb Sledge



## Fiberglass Replacement Handle Kits

Part Number	Std. Pkg. Qty.	Approx. Length	Use For
HH105106FG	1	13	1 lb and 1-1/4 lb Ball Peen — G Series
HH107FG	1	14	1-1/2 lb Ball Peen — G Series
HH108FG	1	16	2 lb Ball Peen — G Series
HH109110FG	1	16	2-1/2 lb and 3 lb Ball Peen — G Series
HH173FG	1	12-1/2	1-1/2 lb Brick Hammer
HHBFFG	1	12	All Body Hammers with 12" Handle

