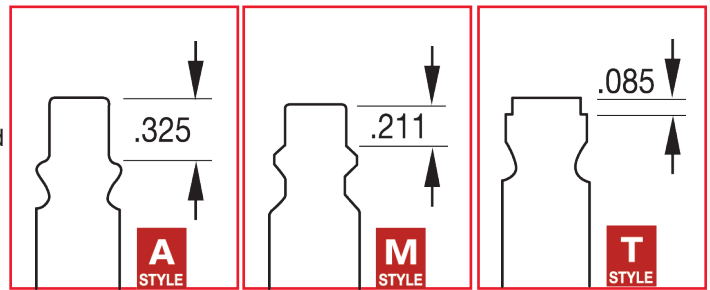


A-M®-T STYLE 3 WAY COUPLERS

- 1/4" basic flow size
- A-M®-T Style are push type with Drag Guard
- 3 ball bearing connection
- Heavy duty brass - rust resistant
- Accepts the 3 most popular 1/4" basic style plugs sold
 - Milton® or industrial style plugs (M-Style®)
 - Aro 210-style plugs (A-Style)
 - Tru-Flate/Parker automotive style plugs (T-Style)
- Air Flow: 42 SCFM



745 • 746

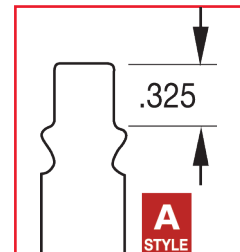


Boxed Part No.	Bulk Part No.	Retail Part No.	Per Card	NPT (in)	Connection	Product Specs		Features	
						Body	Sleeve		
745	745BK	s-745	1	1/4"	Female	Heavy Duty Brass	Heavy Duty Brass	Push-Type	Drag Guard
746	746BK	s-746	1		Male	Brass	Brass		

A-STYLE ARO "210" INTERCHANGE

- 1/4" basic flow size
- A-Style couplers are push type for quicker connection
- 2 locking rod connection
- A-Style couplers are steel, plated to resist rust
- A-Style plugs are case hardened steel, plated to resist rust

- Maximum inlet pressure: 300 PSI
- Maximum temperature: 250°F
- Air flow: 34 SCFM
- Seals: Buna-N



775 • 776

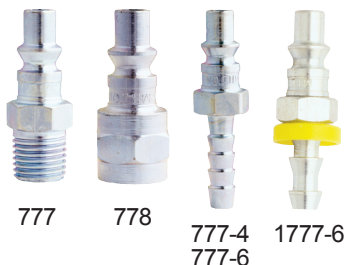


A-Style Couplers

Boxed Part No.	Bulk Part No.	Retail Part No.	Per Card	NPT (in)	Connection	Product Specs			Feature
						Body	Sleeve		
775	775BK	s-775	1	1/4"	Female	Case Hardened Plated Steel	Case Hardened Plated Steel	Push-Type	
776	776BK	s-776	1		Male				
776-4					1/4" ID Hose Barb				
776-6					3/8" ID Hose Barb				

A-STYLE SAFETY COUPLERS AVAILABLE ON PGS. 52 & 61

777 • 778 • 1777



A-Style Plugs

Boxed Part No.	Bulk Part No.	Retail Part No.	Per Card	NPT (in)	Product Specs	
					Connection	Material
777	777BK	s-777	2	1/4"	Male	Case Hardened Plated Steel
778	778BK	s-778	2		Female	
777-4	777-4BK				1/4" ID Hose Barb	
777-6					3/8" ID Hose Barb	
1777-6					3/8" ID Push-on & Lock	

s-772 • s-213 • s-775-4



A-Style 1/4" Coupler Kits

Kit Part No.	Kit includes (qty):		
	#775	#777	#778
s-213	1	3	1
s-772	1	1	
s-775-4	4		



WARNING: FOR USE WITH COMPRESSED SHOP AIR ONLY. NOT FOR BREATHABLE AIR USE