

FIELD RE-CALIBRATABLE SERVICE GAGES

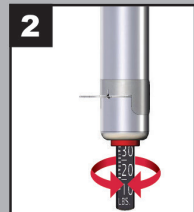
Exclusive Quick Click™ system provides dial-in accuracy

- Nickel plated brass construction protects against rust and corrosion
- Durable nickel plated brass tubular body
- 2-sided, aluminum indicator bar
- Factory-calibrated in three pressure ranges
- Hang loop included
- s-986CBNT and s-986CBNTKB - 10° bend in neck for ease of access on inner duals

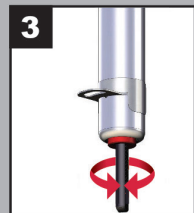
PSI	s-976C	s-982C	s-986C	s-986CBNT
kPa/Bar	s-976CKB	s-982CKB	s-986CKB	s-986CBNTKB
	Standard Dual Head	Large Bore Dual Head	Dual Head Straight Foot	Dual Head Straight Foot 10° Bend



1
Insert Calibration Tool



2
Slowly Rotate Indicator Bar Until Tool is Engaged



3
Turn Indicator Bar to Adjust
1 Click = 0.25 PSI



4
Remove Tool When Done

COUPLERS
PLUGS
CAM/GROOVE

HOSE
HOSE REELS
FITTINGS

BLO-GUNS

FRLS

PUSH-TO-CONNECT

INFLATOR GAGES

PRESSURE &
SERVICE GAGES

GREASE GUNS

MERCHANDISERS

COUPLERS
PLUGS
CAM/GROOVE

HOSE
HOSE REELS
FITTINGS

BLO-GUNS

FRLs

PUSH-TO-CONNECT

INFLATOR GAGES

PRESSURE &
SERVICE GAGES

GREASE GUNS

MERCHANDISERS

PENCIL TYPE TIRE PRESSURE GAGES

- USA made consumer tire gages
- Includes strong flexible white NYLON INDICATOR BAR to provide long, trouble-free life with the same certified accuracy associated with all Milton® tire gages
- Always check tire pressure when tires are cold

Nickel Plated Brass Pressure Gages



Bulk Part No.	Retail Part No.	Per Card	Pressure Range		Chuck Style	Feature/Applications
			PSI	Increments		
917BK	s-917	1	2 to 20 (20 to 140)	1 PSI (10 kPa)	Single, Angled w/ Deflator Pin	Low Pressure ATVs, Golf Carts & Air Springs
920BK	s-920	1	10 to 70 (60 to 500)	2 PSI (20 kPa)		Higher Pressure Automobiles Built-in Tire Tread Depth Gage
921BK	s-921	1	5 to 50 (40 to 350)	1 PSI (10 kPa)	Straight	Passenger Cars
923BK	s-923	1	5 to 50 (40 to 350)			
925BK	s-925	1	2 to 120 (120 to 820)	2 PSI (20 kPa)	Single, Angled w/ Deflator Pin	Trucks, RVs & Bicycles
927BK	s-927	1	2 to 120 (120 to 820)		Dual Head	Trucks
928BK	s-928	1	5 to 50 (40 to 350)	1 PSI (10 kPa)	Single, Angled w/ Deflator Pin	Cars & Air/Water Filled Tractors
929BK	s-929	1	2 to 120 (120 to 820)	2 PSI (20 kPa)	Dual Head, Straight Foot	Trucks

DIAL TYPE TIRE GAGES



- Internal diaphragm construction for greater durability
- 45° single chuck with deflator valve
- Deflator button holds measured pressure in gage until pressed to release
- Durable rubber boot
- Not for use with water filled tires

Retail Part No.	Per Card	PSI		kPa		Tire Tread Depth Gage
		Range	Increments	Range	Increments	
s-931	1	0 to 15	1 PSI	0 to 100	2 kPa	No
s-932	1	0 to 60	2 PSI	0 to 400	20 kPa	
s-933	1	0 to 160	1 PSI	0 to 1100	20 kPa	
s-934	1	0 to 120	2 PSI	0 to 800	20 kPa	YES