

1/2" DR.



## 1/2" DRIVE SAE MASTER IMPACT SOCKET SET

2668 SET OF 39

MODEL	SIZE	MODEL	SIZE
212	3/8"	212D	3/8" (DEEP)
214	7/16"	214D	7/16" (DEEP)
216	1/2"	216D	1/2" (DEEP)
218	9/16"	218D	9/16" (DEEP)
220	5/8"	220D	5/8" (DEEP)
222	11/16"	222D	11/16" (DEEP)
224	3/4"	224D	3/4" (DEEP)
226	13/16"	226D	13/16" (DEEP)
228	7/8"	228D	7/8" (DEEP)
230	15/16"	230D	15/16" (DEEP)
232	1"	232D	1" (DEEP)
234	1-1/16"	234D	1-1/16" (DEEP)
236	1-1/8"	236D	1-1/8" (DEEP)
238	1-3/16"	238D	1-3/16" (DEEP)
240	1-1/4"	240D	1-1/4" (DEEP)
242	1-5/16"	242D	1-5/16" (DEEP)
244	1-3/8"	244D	1-3/8" (DEEP)
246	1-7/16"	246D	1-7/16" (DEEP)
248	1-1/2"	248D	1-1/2" (DEEP)

Includes: Universal Joint (2300)



## 1/2" DRIVE 12 POINT SAE MASTER IMPACT SOCKET SET

2698 SET OF 39

MODEL	SIZE	MODEL	SIZE
212Z	3/8"	26701	3/8" (DEEP)
214Z	7/16"	26702	7/16" (DEEP)
216Z	1/2"	26703	1/2" (DEEP)
218Z	9/16"	26704	9/16" (DEEP)
220Z	5/8"	26705	5/8" (DEEP)
222Z	11/16"	26706	11/16" (DEEP)
224Z	3/4"	26707	3/4" (DEEP)
226Z	13/16"	26708	13/16" (DEEP)
228Z	7/8"	26709	7/8" (DEEP)
230Z	15/16"	267010	15/16" (DEEP)
232Z	1"	267011	1" (DEEP)
234Z	1-1/16"	267012	1-1/16" (DEEP)
236Z	1-1/8"	267013	1-1/8" (DEEP)
238Z	1-3/16"	267014	1-3/16" (DEEP)
240Z	1-1/4"	267015	1-1/4" (DEEP)
242Z	1-5/16"	242ZD	1-5/16" (DEEP)
244Z	1-3/8"	244ZD	1-3/8" (DEEP)
246Z	1-7/16"	246ZD	1-7/16" (DEEP)
248Z	1-1/2"	248ZD	1-1/2" (DEEP)

Includes: Universal Joint (2300)



## 1/2" DRIVE SAE DEEP IMPACT SOCKET SET

- Expanded size range includes deep impact sockets from 5/16 - 1-1/2"

2824 SET OF 24

MODEL	SIZE	MODEL	SIZE
210	5/16"	230	15/16"
212	3/8"	232	1"
214	7/16"	234	1-1/16"
216	1/2"	236	1-1/8"
218	9/16"	238	1-3/16"
220	5/8"	240	1-1/4"
222	11/16"	242	1-5/16"
224	3/4"	244	1-3/8"
226	13/16"	246	1-7/16"
228	7/8"	248	1-1/2"

Includes: 3 Impact Extension Bars: 3" (2503), 5" (2505), 10" (2510), Universal Joint (2300)



## 1/2" DRIVE SAE & METRIC MASTER DOUBLE DEEP IMPACT SOCKET SET

5153DD SET OF 29

MODEL	SIZE	MODEL	SIZE
214D	7/16"	228D	7/8"
216D	1/2"	230D	15/16"
218D	9/16"	232D	1"
220D	5/8"	234D	1-1/16"
222D	11/16"	236D	1-1/8"
224D	3/4"	240D	1-1/4"
226D	13/16"		

MODEL	SIZE	MODEL	SIZE
210MD	10mm	217MD	17mm
211MD	11mm	218MD	18mm
212MD	12mm	219MD	19mm
213MD	13mm	221MD	21mm
214MD	14mm	222MD	22mm
215MD	15mm	226MD	26mm
216MD	16mm	227MD	27mm

### DEEP FLIP SOCKETS

MODEL	SIZE	MODEL	SIZE
2701	3/4" x 13/16"	2704	19mm x 21mm

1/2" DR.

1/2" DR.



## 1/2" DRIVE 12 POINT SAE IMPACT SOCKET SET

2819 SET OF 19

MODEL	SIZE	MODEL	SIZE
212Z	3/8"	232Z	1"
214Z	7/16"	234Z	1-1/16"
216Z	1/2"	236Z	1-1/8"
218Z	9/16"	238Z	1-3/16"
220Z	5/8"	240Z	1-1/4"
222Z	11/16"	242Z	1-5/16"
224Z	3/4"	244Z	1-3/8"
226Z	13/16"	246Z	1-7/16"
228Z	7/8"	248Z	1-1/2"
230Z	15/16"		



## 1/2" DRIVE SAE DEEP IMPACT SOCKET SET

2641 SET OF 19

MODEL	SIZE	MODEL	SIZE
212D	3/8"	232D	1"
214D	7/16"	234D	1-1/16"
216D	1/2"	236D	1-1/8"
218D	9/16"	238D	1-3/16"
220D	5/8"	240D	1-1/4"
222D	11/16"	242D	1-5/16"
224D	3/4"	244D	1-3/8"
226D	13/16"	246D	1-7/16"
228D	7/8"	248D	1-1/2"
230D	15/16"		



## 1/2" DRIVE 12 POINT SAE DEEP IMPACT SOCKET SET

2820 SET OF 19

MODEL	SIZE	MODEL	SIZE
26701	3/8"	267011	1"
26702	7/16"	267012	1-1/16"
26703	1/2"	267013	1-1/8"
26704	9/16"	267014	1-3/16"
26705	5/8"	267015	1-1/4"
26706	11/16"	242ZD	1-5/16"
26707	3/4"	244ZD	1-3/8"
26708	13/16"	246ZD	1-7/16"
26709	7/8"	248ZD	1-1/2"
267010	15/16"		

1/2" DR.

1/2"  
DRIVE

## 1/2" DRIVE SAE IMPACT SOCKET SET

2650 SET OF 13

MODEL	SIZE	MODEL	SIZE
214	7/16"	228	7/8"
216	1/2"	230	15/16"
218	9/16"	232	1"
220	5/8"	234	1-1/16"
222	11/16"	236	1-1/8"
224	3/4"	240	1-1/4"
226	13/16"		

1/2"  
DRIVE

## 1/2" DRIVE 12 POINT SAE IMPACT SOCKET SET

2678 SET OF 14

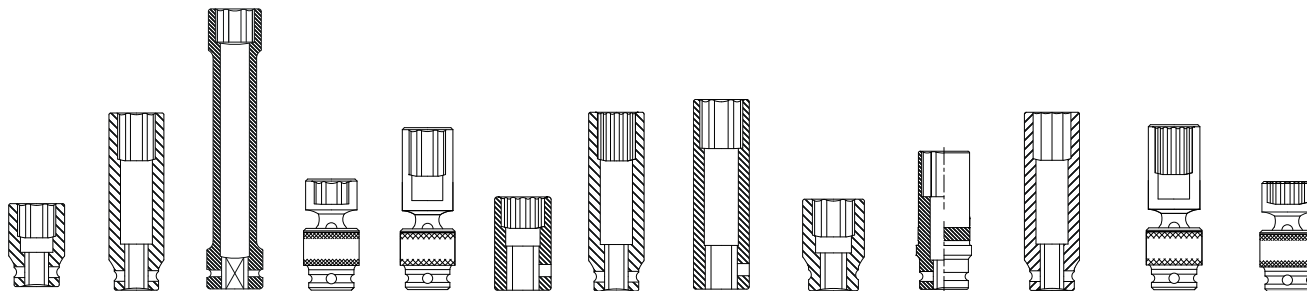
MODEL	SIZE	MODEL	SIZE
214Z	7/16"	228Z	7/8"
216Z	1/2"	230Z	15/16"
218Z	9/16"	232Z	1"
220Z	5/8"	234Z	1-1/16"
222Z	11/16"	236Z	1-1/8"
224Z	3/4"	238Z	1-3/16"
226Z	13/16"	240Z	1-1/4"

1/2"  
DRIVE

## 1/2" DRIVE SAE DEEP IMPACT SOCKET SET

2651 SET OF 13

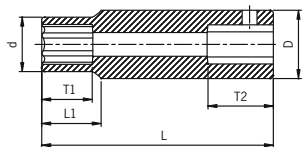
MODEL	SIZE	MODEL	SIZE
214D	7/16"	228D	7/8"
216D	1/2"	230D	15/16"
218D	9/16"	232D	1"
220D	5/8"	234D	1-1/16"
222D	11/16"	236D	1-1/8"
224D	3/4"	240D	1-1/4"
226D	13/16"		



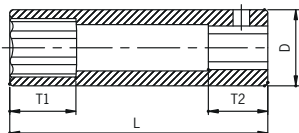
## 1/2" DRIVE INDIVIDUAL SAE SOCKETS

SIZE	STD.	DEEP	EXTRA LONG DEEP	UNIV.	DEEP UNIV.	12 PT.	12 PT. DEEP	EXTRA THIN WALL DEEP	MAGNETIC	WHEEL PROTECT.	8 PT. DEEP	12 PT. DEEP UNIV.	12 PT. UNIV.
SAE	MODEL	MODEL	MODEL	MODEL	MODEL	MODEL	MODEL	MODEL	MODEL	MODEL	MODEL	MODEL	MODEL
5/16"	210	210D	210XD										
3/8"	212	212D	212XD	212U	212UD	212Z	26701		212MG		212QD	212ZUD	212UZ
7/16"	214	214D	214XD	214U	214UD	214Z	26702		214MG		214QD	214ZUD	214UZ
1/2"	216	216D	216XD	216U	216UD	216Z	26703		216MG		216QD	216ZUD	216UZ
9/16"	218	218D	218XD	218U	218UD	218Z	26704		218MG		218QD	218ZUD	218UZ
5/8"	220	220D	220XD	220U	220UD	220Z	26705		220MG		220QD	220ZUD	220UZ
11/16"	222	222D	222XD	222U	222UD	222Z	26706		222MG		222QD	222ZUD	222UZ
3/4"	224	224D	224XD	224U	224UD	224Z	26707	2624	224MG	28492	224QD	224ZUD	224UZ
13/16"	226	226D	226XD	226U	226UD	226Z	26708	2626	226MG	28494	226QD	226ZUD	226UZ
7/8"	228	228D	228XD	228U	228UD	228Z	26709	2628	228MG	28496	228QD	228ZUD	228UZ
15/16"	230	230D	230XD	230U	230UD	230Z	267010		230MG	28498	230QD	230ZUD	230UZ
1"	232	232D	232XD	232U		232Z	267011	2632	232MG	284910	232QD	232ZUD	232UZ
1-1/16"	234	234D	234XD	234U		234Z	267012	2634		284912	234QD	234ZUD	234UZ
1-1/8"	236	236D	236XD	236U		236Z	267013				236QD	236ZUD	236UZ
1-3/16"	238	238D	238XD	238U		238Z	267014					238ZUD	238UZ
1-1/4"	240	240D	240XD	240U		240Z	267015					240ZUD	240UZ
1-5/16"	242	242D	242XD			242Z	242ZD						
1-3/8"	244	244D	244XD			244Z	244ZD						
1-7/16"	246	246D	246XD			246Z	246ZD						
1-1/2"	248	248D	248XD			248Z	248ZD						
1-9/16"	250	250D											
1-5/8"	252	252D											
1-11/16"	254	254D											
1-3/4"	256	256D											
1-13/16"	258	258D											
1-7/8"	260	260D											
1-15/16"	262	262D											
2"	264	264D											
2-1/16"	266	266D											
2-1/8"	268	268D											
2-3/16"	270	270D											
2-1/4"	272	272D											

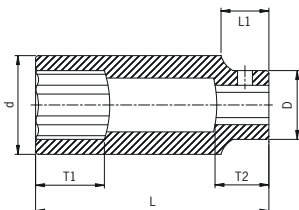
## 1/2" DR. DEEP 6 POINT SAE



A



B



C

ITEM	SIZE	SHAPE	D	D	T1	T2	L1	L
210D	5/16"	A	14.5	22	14	18	17	78
212D	3/8"	A	16	22	14	18	17	78
214D	7/16"	A	18	22	14	18	17	78
216D	1/2"	A	20	22	14	18	17	78
218D	9/16"	A	22	24	17	18	17	78
220D	5/8"	B	/	25	17	18	/	78
222D	11/16"	B	/	26	17	18	/	78
224D	3/4"	B	/	28	17	18	/	78
226D	13/16"	B	/	30	24	18	/	78
228D	7/8"	B	/	32	24	18	/	78
230D	15/16"	B	/	34	24	18	/	78
232D	1"	B	/	36	24	18	/	78
234D	1-1/16"	B	/	38	24	18	/	78
236D	1-1/8"	C	40	38	24	18	15	78
238D	1-3/16"	C	42	38	24	18	15	78
240D	1-1/4"	C	44	38	24	18	15	78
242D	1-5/16"	C	45	38	34	24	18	78
244D	1-3/8"	C	47	38	34	24	18	78
246D	1-7/16"	C	48.5	38	34	24	18	78
248D	1-1/2"	C	50.5	39	34	24	18	78
250D	1-9/16"	C	54	44	39	29	23	78
252D	1-5/8"	C	56	44	39	29	23	78
254D	1-11/16"	C	61	44	39	29	23	93
256D	1-3/4"	C	63	44	39	29	23	93
258D	1-13/16"	C	65	44	39	29	23	93
260D	1-7/8"	C	66	44	39	29	23	93
262D	1-15/16"	C	68	44	39	29	23	93
264D	2"	C	69	52	48	38	32	93
266D	2-1/16"	C	72	52	48	38	32	93
268D	2-1/8"	C	75	52	48	38	32	93
270D	2-3/16"	C	75	52	48	38	32	93
272D	2-1/4"	C	78	52	48	38	32	93