



**LIFETIME
WARRANTY**

Backed by a Lifetime Warranty, Sunex Impact Sockets are warranted against defects in materials and workmanship for the life of the product. This warranty does not apply to items that have been misused, abused, altered in any way, or worn out from use. Some Adapters, Reducers, and Extra Thin Wall Impact Sockets are sold with out of box warranty.

IMPACT SOCKETS

Since 1984, we've led the market with our solution-based designs and quality materials. All of our Impact Sockets (low-profile, standard, deep, hex drivers, universal joint, specialty, and extensions/adapters) are backed by an industry-leading warranty, so you can rest easy knowing your sockets are guaranteed to perform.

IMPACT SOCKETS

HIGHEST QUALITY. HIGHEST STANDARDS.

RADIUSED CORNERS

Focuses impact on fastener's flat surfaces, increasing torque and reducing wear and rounding to the fastener.

DURABLE CR-MO STEEL

Precision manufactured with chrome-molybdenum steel for high-impact applications.

HEAT TREATED / TEMPERED

Sockets are first heat treated to increase hardness and then tempered to maximize durability.



SPECIALTY SOCKETS

Every job has its own challenges. We offer a wide selection of specialty sockets to handle anything the job calls for.

METRIC

SAE

1/4"
DRIVE

3/8"
DRIVE

1/2"
DRIVE

3/4"
DRIVE

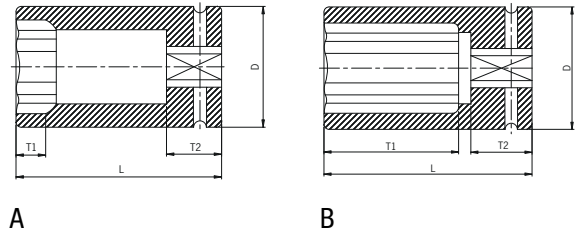
1"
DRIVE

NO-SKIP SIZE SPECTRUM

Sunex Impact Socket Sets include every size in the specification range: Largest to smallest, and everything in between.

3/4" DR. BUDD WHEEL LIMITED DEPTH & DEEP HEX SAE

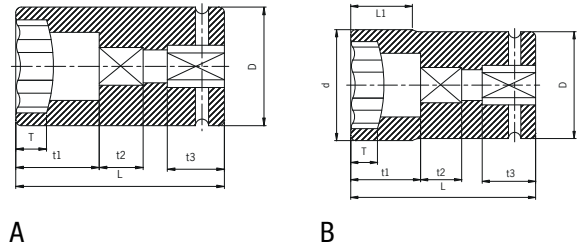
ITEM	SIZE	SHAPE	D	T1	T2	L
448LD	1-1/2"	A	57	14	26	97
448DH	1-1/2"	B	60	66	30	102



3/4" DR. COMBINATION BUDD WHEEL 6 POINT SAE & METRIC

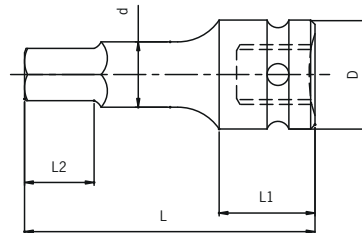
ITEM	SIZE	SHAPE	D	D	T	T1	T2	T3	L1	L
4826C	1-1/2" x 13/16"	A	/	57	14	38	20	26	/	95

ITEM	SIZE	SHAPE	D	D	T	T1	T2	T3	L1	L
43517B	35mm x 17mm	B	54	52	13	34	20	26	30	90
4121C	41mm x 21mm	B	58	54	14	38	22	26	30	99



3/4" DR. HEX SAE

ITEM	SIZE	D	D	L2	L1	L
45061	3/4"	23	44	22	32	88
45062	7/8"	26.7	44	24	32	88
45063	1"	30.2	44	26	32	88
45064	1-1/8"	34.2	44	30	32	88
45065	1-1/4"	38.3	44	30	32	88



3/4" DR. HEX METRIC

ITEM	SIZE	D	D	L2	L1	L
412MH	12mm	15	44	24	32	88
450714	14mm	17.5	44	18	32	88
450717	17mm	21	44	20	32	88
450719	19mm	23	44	22	32	88
450722	22mm	26.5	44	24	32	88
450724	24mm	28.7	44	24	32	88

