



#126100 WOMEN'S ATHLETIC FLEECE WOMEN'S CROP HOOD

- 9.5oz Ringspun 60% Cotton / 40% Polyester fabric
- Badger sport shoulder for maximum movement
- Spandex reinforced rib knit cuffs and waistband
- Crop Body
- Double-needle hem
- Embroidered Badger B logo on left sleeve

COLORS

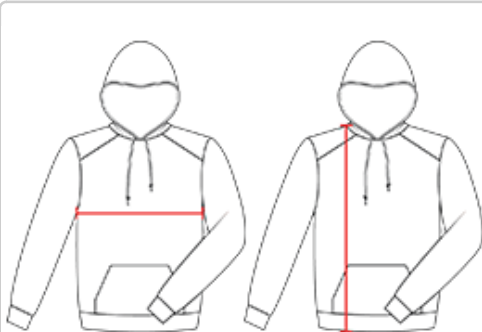


SPECIFICATIONS

Piece Weight
measured in pounds

Case Count
of units per case

HOW TO MEASURE



These product specifications reference a product's measurements. For sizing information and guidance, please reference our sizing charts.

BODY LENGTH

Measured on the front from the shoulder/neck intersection to the bottom of the garment.

CHEST WIDTH

Measured across the chest, 1" below the armhole seam.