



# #210300 **GIRLS'**

## B-CORE GIRLS' 1/4 ZIP

- 100% Polyester moisture management/antimicrobial performance fabric
- Contrast Self-fabric inner collar with 6" locking zipper
- Badger sport shoulder for maximum movement
- Thumbhole in sleeves - Open bottom
- Double-needle hemmed bottom

### COLORS

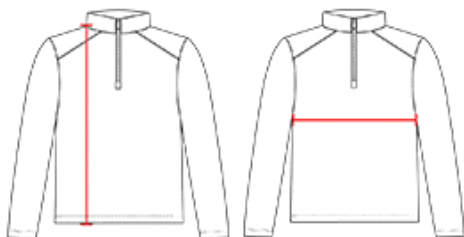


### SPECIFICATIONS

Color	XS	S	M	L	XL
<b>Piece Weight</b> measured in pounds	0.28	0.28	0.28	0.28	0.28
<b>Spec Body Length</b> measured in inches	19	20	21	22	23
<b>Spec Chest Width</b> measured in inches	13	13	14	15	16
<b>Case Count</b> # of units per case	36	36	36	36	36

### HOW TO MEASURE

These product specifications reference a product's measurements.  
For sizing information and guidance, please reference our sizing charts.



**BODY LENGTH**

Measured on the front from the shoulder/neck intersection to the bottom of the garment.

**CHEST WIDTH**

Measured across the chest, 1" below the armhole seam.