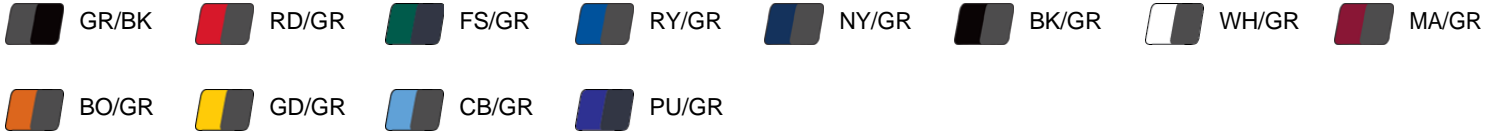




# #400800 **WOMEN'S** ULTIMATE SOFTLOCK™ WOMEN'S 1/4 ZIP

- Badger heat seal logo on left sleeve
- Contrast sport shoulder and sleeves
- 100% Soft polyester moisture management/antimicrobial performance fabric
- Badger sport paneled shoulder for maximum movement
- Double-needle hemsleeve
- Superior interlock fabric for comfort
- Self-fabric collar with 8" locking zipper
- UPF 50+ sun protection from UVA and UVB

## COLORS

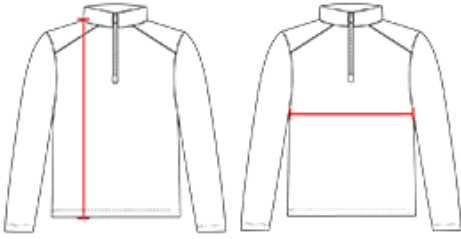


## SPECIFICATIONS

| Color   | XS     | S      | M    | L    | XL   | 2XL  |
|---|--------|--------|------|------|------|------|
| <b>Piece Weight</b><br>measured in pounds     | 0.37   | 0.37   | 0.37 | 0.37 | 0.37 | 0.37 |
| <b>Spec Body Length</b><br>measured in inches | 26     | 27     | 28   | 29   | 30   | 31   |
| <b>Spec Chest Width</b><br>measured in inches | 16 1/2 | 17 1/2 | 19   | 21   | 23   | 25   |
| <b>Case Count</b><br># of units per case      | 36     | 36     | 36   | 36   | 36   | 36   |

## HOW TO MEASURE

These product specifications reference a product's measurements.  
For sizing information and guidance, please reference our sizing charts.



**BODY LENGTH**

Measured on the front from the shoulder/neck intersection to the bottom of the garment.

**CHEST WIDTH**

Measured across the chest, 1" below the armhole seam.