

#410300 **WOMEN'S** B-CORE WOMEN'S 1/4 ZIP

- Badger heat seal logo on left sleeve
- Badger sport paneled shoulder for maximum movement
- 100% polyester moisture management/antimicrobial performance fabric
- Thumb holes in sleeves
- Contrast zipper and inner collar
- Self-fabric collar with 8" locking zipper



COLORS

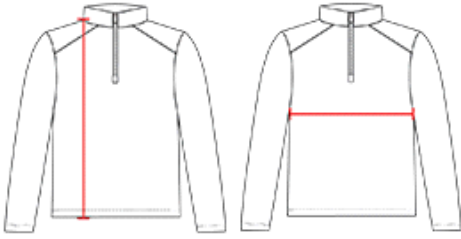


SPECIFICATIONS

Color	XS	S	M	L	XL	2XL
Piece Weight measured in pounds	0.37	0.37	0.37	0.37	0.37	0.37
Spec Body Length measured in inches	26	27	28	29	30	31
Spec Chest Width measured in inches	16 1/2	17 1/2	19	21	23	25
Case Count # of units per case	36	36	36	36	36	36

HOW TO MEASURE

These product specifications reference a product's measurements.
For sizing information and guidance, please reference our sizing charts.



BODY LENGTH

Measured on the front from the shoulder/neck intersection to the bottom of the garment.

CHEST WIDTH

Measured across the chest, 1" below the armhole seam.