



# #413700 **WOMEN'S** B-CORE S/S WOMEN'S 1/4 ZIP

- Badger heat seal logo on left sleeve
- Badger sport paneled shoulder for maximum movement
- 100% polyester moisture management/antimicrobial performance fabric
- Contrast zipper and inner collar
- Double-needle hem
- Self-fabric collar with 8" locking zipper

## COLORS

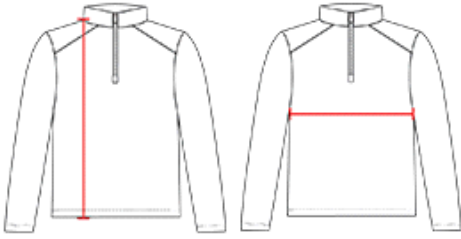


## SPECIFICATIONS

Color	XS	S	M	L	XL	2XL
<b>Piece Weight</b> measured in pounds	0.36	0.36	0.36	0.36	0.36	0.36
<b>Spec Body Length</b> measured in inches	26	27	28	29	30	31
<b>Spec Chest Width</b> measured in inches	16 1/2	17 1/2	19	21	23	25
<b>Case Count</b> # of units per case	36	36	36	36	36	36

## HOW TO MEASURE

These product specifications reference a product's measurements.  
For sizing information and guidance, please reference our sizing charts.



**BODY LENGTH**

Measured on the front from the shoulder/neck intersection to the bottom of the garment.

**CHEST WIDTH**

Measured across the chest, 1" below the armhole seam.