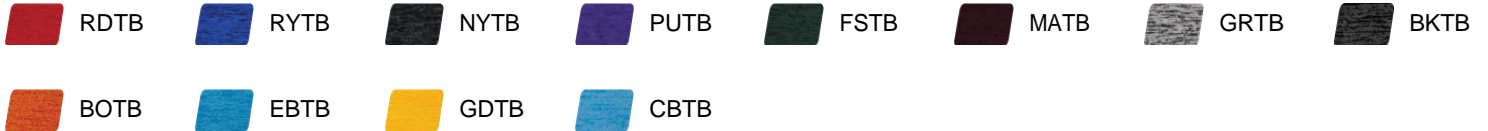




# #417200 **MEN'S** TONAL BLEND 1/4 ZIP

- Badger heat seal logo on left sleeve
- Badger sport paneled shoulder for maximum movement
- Double-needle hem
- 100% Sublimated Polyester moisture management/antimicrobial fabric
- Self-fabric collar with 8" locking zipper

## COLORS

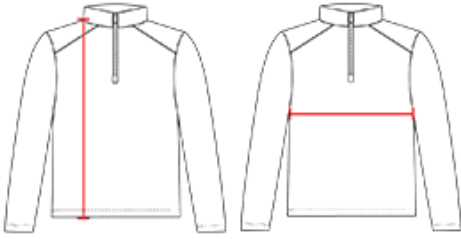


## SPECIFICATIONS

| Color   | XS   | S    | M    | L    | XL   | 2XL  | 3XL  | 4XL  |
|---|------|------|------|------|------|------|------|------|
| <b>Piece Weight</b><br>measured in pounds     | 0.36 | 0.36 | 0.36 | 0.36 | 0.36 | 0.36 | 0.36 | 0.36 |
| <b>Spec Body Length</b><br>measured in inches | 26   | 27   | 28   | 29   | 30   | 31   | 32   | 33   |
| <b>Spec Chest Width</b><br>measured in inches | 18   | 19   | 21   | 23   | 25   | 27   | 29   | 31   |
| <b>Case Count</b><br># of units per case      | 36   | 36   | 36   | 36   | 36   | 36   | 24   | 24   |

## HOW TO MEASURE

These product specifications reference a product's measurements.  
For sizing information and guidance, please reference our sizing charts.



**BODY LENGTH**

Measured on the front from the shoulder/neck intersection to the bottom of the garment.

**CHEST WIDTH**

Measured across the chest, 1" below the armhole seam.