



#422200 MEN'S

HEX 2.0 1/4 ZIP

- 100% Polyester moisture management/antimicrobial performance fabric
- Sublimated front and back body
- Self-fabric collar with 8" locking zipper
- Badger sport shoulder for maximum movement
- Double-needle hem
- Badger heat seal logo on left sleeve

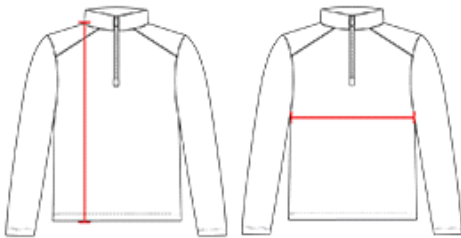
COLORS



SPECIFICATIONS

| Color | XS | S | M | L | XL | 2XL | 3XL | 4XL |
|---|------|------|------|------|------|------|------|------|
| Piece Weight measured in pounds | 0.00 | 0.00 | 0.00 | 0.00 | 0.00 | 0.00 | 0.00 | 0.00 |
| Case Count # of units per case | 1 | 1 | 1 | 1 | 1 | 1 | 1 | 1 |

HOW TO MEASURE



These product specifications reference a product's measurements. For sizing information and guidance, please reference our sizing charts.

BODY LENGTH

Measured on the front from the shoulder/neck intersection to the bottom of the garment.

CHEST WIDTH

Measured across the chest, 1" below the armhole seam.