



# #508C1 MEN'S ADULT BASEBALL JERSEY

- 100% Cationic Colorfast Polyester Interlock
- Moisture Wicking
- 2 Color Crewneck
- Contract ColorCollar
- 1/8" Piping at Front and Back of Raglan Sleeve
- Self-Material 1/4" White Sleeve Ends
- Scoop Hemmed Bottom

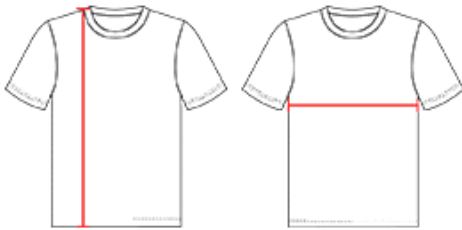
## COLORS



## SPECIFICATIONS

| Color                                     | S    | M    | L    | XL   | 2XL  | 3XL  |
|---|------|------|------|------|------|------|
| <b>Piece Weight</b><br>measured in pounds | 0.36 | 0.36 | 0.36 | 0.36 | 0.36 | 0.36 |
| <b>Case Count</b><br># of units per case  | 1    | 1    | 1    | 1    | 1    | 1    |

## HOW TO MEASURE



These product specifications reference a product's measurements. For sizing information and guidance, please reference our sizing charts.

### BODY LENGTH

Measured on the front from the shoulder/neck intersection to the bottom of the garment.

### CHEST WIDTH

Measured across the chest, 1" below the armhole seam.