



#530000 MEN'S

C2 POLO

- Back neck tape
- Knit collar
- 100% Polyester moisture management/antimicrobial performance fabric
- Double-needle hem
- Three button placket

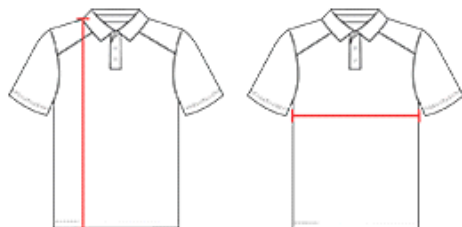
COLORS



SPECIFICATIONS

| Color | S | M | L | XL | 2XL | 3XL |
|---|------|------|------|------|------|------|
| Piece Weight measured in pounds | 0.27 | 0.27 | 0.27 | 0.27 | 0.27 | 0.27 |
| Spec Body Length measured in inches | 29 | 30 | 31 | 32 | 33 | 34 |
| Spec Chest Width measured in inches | 19 | 21 | 23 | 25 | 27 | 29 |
| Case Count # of units per case | 72 | 72 | 72 | 72 | 72 | 36 |

HOW TO MEASURE



These product specifications reference a product's measurements. For sizing information and guidance, please reference our sizing charts.

BODY LENGTH

Measured on the front from the shoulder/neck intersection to the bottom of the garment.

CHEST WIDTH

Measured across the chest, 1" below the armhole seam.