



# #560200 **WOMEN'S**

## C2 WOMEN'S 1/4 ZIP

- 100% Polyester moisture management/antimicrobial performance fabric
- Self-fabric collar with 8" locking zipper
- Double-needle hem

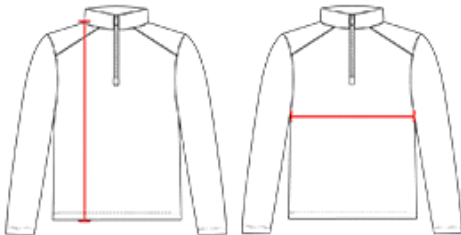
### COLORS



### SPECIFICATIONS

Color	XS	S	M	L	XL	2XL
<b>Piece Weight</b> measured in pounds	0.55	0.55	0.55	0.55	0.55	0.55
<b>Case Count</b> # of units per case	1	1	1	1	1	1

### HOW TO MEASURE



These product specifications reference a product's measurements. For sizing information and guidance, please reference our sizing charts.

#### BODY LENGTH

Measured on the front from the shoulder/neck intersection to the bottom of the garment.

#### CHEST WIDTH

Measured across the chest, 1" below the armhole seam.