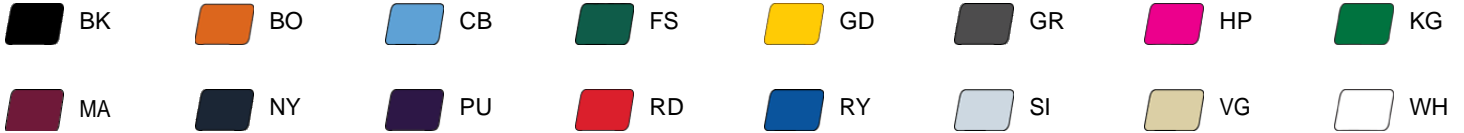




#590200 **WOMEN'S** C2 WOMEN'S POLO

- 100% polyester moisture management/antimicrobial performance fabric
- Shoulder panels
- Contour silhouette
- Three button placket
- Solid knit collar
- Taped back neck
- Double-needle hem

COLORS

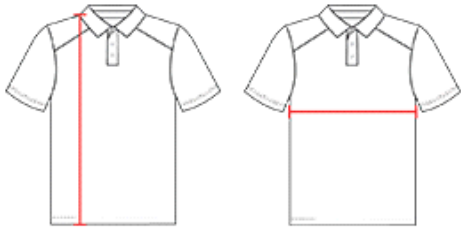


SPECIFICATIONS

Color	XS	S	M	L	XL	2XL
Piece Weight measured in pounds	0.50	0.50	0.50	0.50	0.50	0.50
Spec Body Length measured in inches	25	26	27	28	29	30
Spec Chest Width measured in inches	16	17.5	19	20.5	22	23.5
Case Count # of units per case	72	72	72	72	72	72

HOW TO MEASURE

These product specifications reference a product's measurements.
For sizing information and guidance, please reference our sizing charts.



BODY LENGTH

Measured on the front from the shoulder/neck intersection to the bottom of the garment.

CHEST WIDTH

Measured across the chest, 1" below the armhole seam.