



590BPLY YOUTH YOUTH CAGE BATTER'S JACKET

- 95% Polyester / 5% Spandex Soft-Tec Colorfast front and back body and side panels
- 100% Colorfast Polyester Interlock contrast color sleeve
- collar and side panels
- Modimed V- Neck for comfort and appearance
- Right side front pocket with button to hold items during wearing
- Scoop bottom

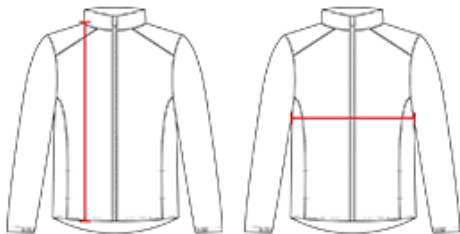
COLORS



SPECIFICATIONS

Color	S	M	L	XL
Piece Weight measured in pounds	0.51	0.51	0.51	0.51
Case Count # of units per case	24	24	24	24

HOW TO MEASURE



These product specifications reference a product's measurements. For sizing information and guidance, please reference our sizing charts.

BODY LENGTH

Measured on the front from the shoulder/neck intersection to the bottom of the garment.

CHEST WIDTH

Measured across the chest, 1" below the armhole seam.