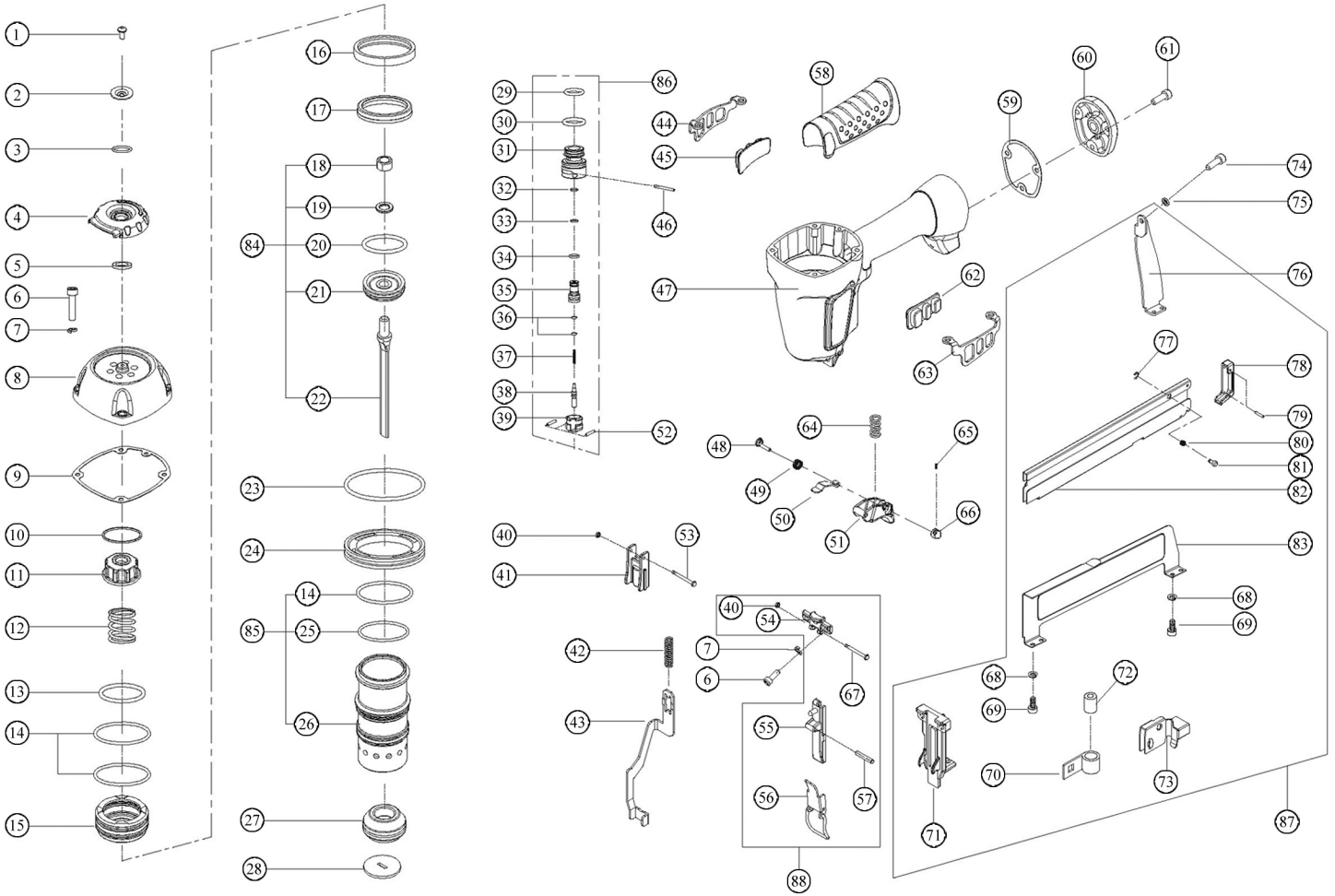


Air Locker

Model # MS200A



No.	DESCRIPTION	Qty.	No.	DESCRIPTION	Qty.	No.	DESCRIPTION	Qty.
1	Screw	1	30	O-ring	1	59	Gasket	1
2	Washer	1	31	Trigger Valve Head	1	60	Tail Cover	1
3	O-ring	1	32	O-ring	1	61	Screw	3
4	Exhaust Cover	1	33	O-ring	1	62	Prevent Fall Frame (A)	1
5	Washer	1	34	O-ring	1	63	Prevent Fall Frame (A)	1
6	Screw	6	35	Trigger Valve Guide	1	64	Spring	1
7	Washer	6	36	O-ring	2	65	Pin	1
8	Cylinder Cap	1	37	Trigger Compression Spring	1	66	Trigger Rotating Wrench	1
9	Gasket	1	38	Trigger Valve Stem	1	67	Pin	1
10	Washer	1	39	Seal,Air	1	68	Washer	4
11	Piston Stopper	1	40	Retainer Ring	2	69	Screw	4
12	Spring	1	41	Catch Guide Plate	1	70	Spring	1
13	O-ring	1	42	Spring	1	71	Driver Guide	1
14	O-ring	3	43	Release Catch	1	72	Roller	1
15	Head Valve Piston	1	44	Prevent Fall Frame (B)	1	73	Nail Pusher	1
16	Stopper	1	45	Prevent Fall Frame (B)	1	74	Screw	1
17	Seal,Air	1	46	Pin	1	75	Washer	1
18	Screw	1	47	Body	1	76	Magazine Support	1
19	Washer	1	48	Pin	1	77	E-Ring	1
20	O-ring	1	49	Spring	1	78	Tail Cover	1
21	Piston Head	1	50	Contact Lever	1	79	Pin	2
22	Driver Blade	1	51	Trigger	1	80	Spring	1
23	O-ring	1	52	Pin	2	81	Pin	1
24	Spacer	1	53	Pin	1	82	Lower Magazine	1
25	O-ring	1	54	Spacer	1	83	Upper Magazine	1
26	Cylinder	1	55	Driver Guide Cover	1	84	Driver Blade Set	1
27	Bumper	1	56	Click Lever Set	1	85	Cylinder Set	1
28	Nozzle	1	57	Cylinder Pin	1	86	Trigger Valve Set	1
29	O-Ring	1	58	Handle Grip	1	87	Magazine Assembly	1
						88	Driver Guide Cover Assembly	1