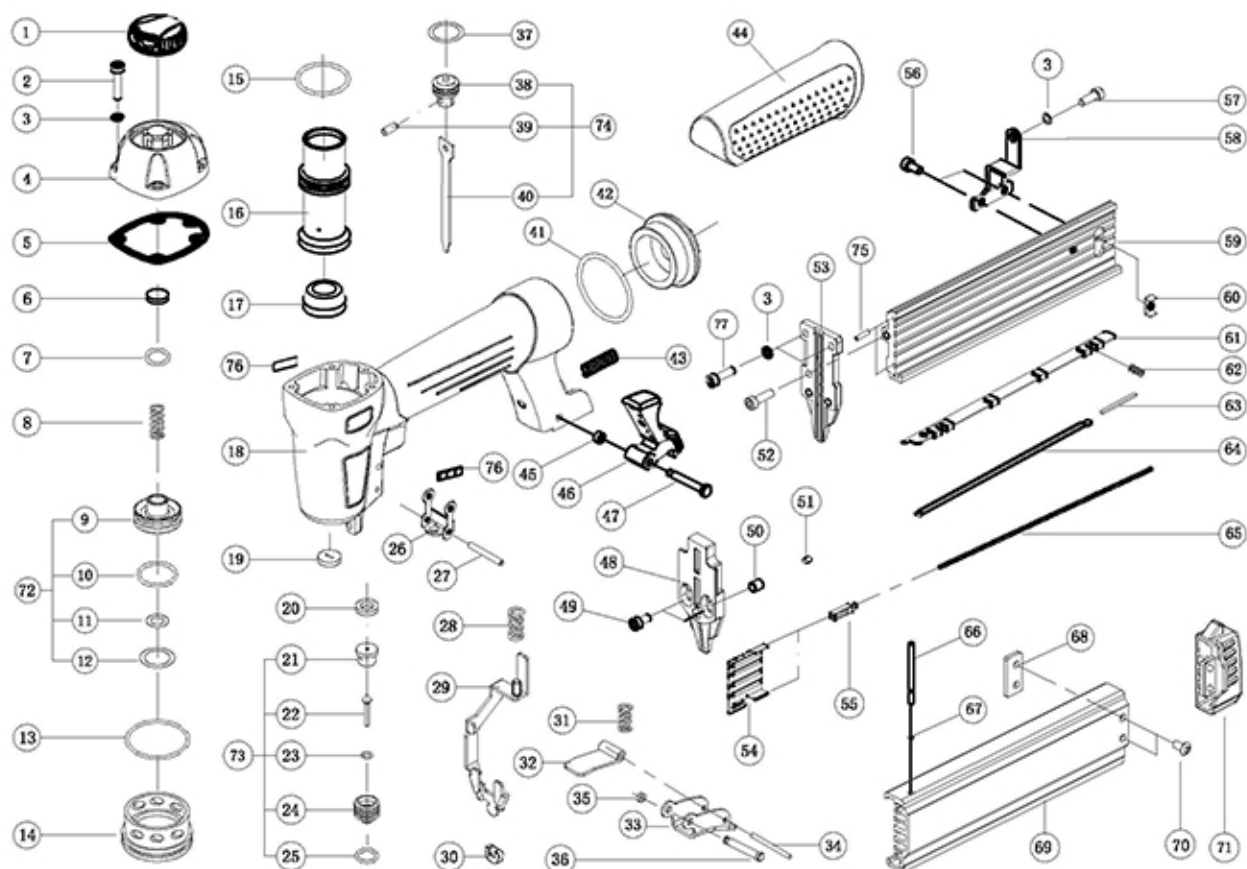


# Air Locker

## SCHEMATIC & PARTS LIST

Model : P635



SNo.	Description	Qty.	SNo.	Description	Qty.	SNo.	Description	Qty.
1	Exhaust Deflector	1	33	Trigger Body	1	65	Nail Pusher Spring	2
2	Screw Bolt	4	34	Spring Cylinder Pin	1	66	Step Pin	1
3	Washer	6	35	Retainer Ring	1	67	O-Ring	1
4	Cylinder Cap	1	36	Step Pin	1	68	Magazine End Cover Stopper	1
5	Gasket	1	37	O-Ring	1	69	Magazine Mobile	1
6	Seal, Air	1	38	Driver Piston	1	70	Screw Bolt	2
7	O-Ring	1	39	Driver Piston Pin	1	71	Magazine End Cover	1
8	Spring	1	40	Driver Blade	1	72	Head Valve Kit	1
9	Head Valve Piston	1	41	O-Ring	1	73	Trigger Valve Kit	1
10	O-Ring	1	42	Air Inlet End Cover	1	74	Driver Assembly	1
11	O-Ring	1	43	Spring	1	75	Spring Pin	2
12	O-Ring	1	44	Hand Grip	1	76	Scratch Bumper	2
13	O-Ring	1	45	Retainer Ring	1	77	Screw Bolt	2
14	Support Collar	1	46	Magazine Click Lever	1			
15	O-Ring	1	47	Step Pin	1			
16	Cylinder	1	48	Driver Guide Cover	1			
17	Bumper	1	49	Screw Bolt	2			
18	Tool Body	1	50	Bushing Ring	1			
19	Nozzle	1	51	Magnet Piece	1			
20	Seal, Air	1	52	Screw Bolt	2			
21	Trigger Valve Stem	1	53	Driver Guide	1			
22	Trigger Valve Pin	1	54	Nail Pusher	1			
23	O-Ring	1	55	Pusher Spring Holder	2			
24	Trigger Valve Cage	1	56	Screw Bolt	1			
25	O-Ring	1	57	Screw Bolt	2			
26	Trigger Guide Frame	1	58	Magazine Bracket	1			
27	Spring Cylinder Pin	1	59	Magazine Fixed	1			
28	Compression Spring	1	60	Stopper	1			
29	Safety Unit	1	61	Base Plate for Magazine	4			
30	Non-Marring Tip	1	62	Spring	8			
31	Compression Spring	1	63	Base Plate	1			
32	Trigger Plunging Plate	1	64	Base Plate	1			