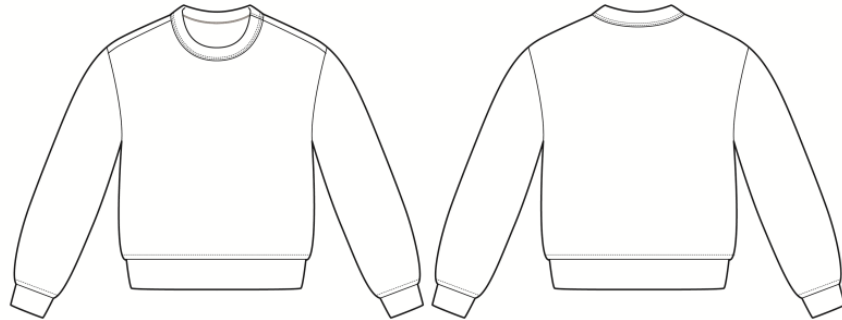


# BELLA + CANVAS®

## MEASUREMENT SPECIFICATION REPORT

STYLE # 7511 - WOMEN'S CLASSIC CREWNECK SWEATSHIRT



### FABRICATION

52% AIRLUME COMBED AND RING-SPUN COTTON, 48% POLYESTER

90% AIRLUME COMBED AND RING-SPUN COTTON, 10% POLYESTER

### Points of Measurement (inches)

All measurements are measured flat

Body Length From HPS

Chest

	S	M	L	XL	2XL
Body Length From HPS	22 3/4	23 3/8	24	24 5/8	25 1/4
Chest	20	20 3/4	21 3/4	22 3/4	23 3/4

Disclaimer: Please note that the above sizing chart is subject to change.

# BE DIFFERENT

AIRLUME JERSEY | NO SWEATSHOPS | WRAP CERTIFIED | RETAIL QUALITY

