

— Instruction Manual —

# VB335, VB340, VB340F AND VB354

Volleyball sleeve adapter for 3" post in 3 1/2" floor socket or 3" post in 4" floor socket  
or 3 1/2" post in 4" floor socket

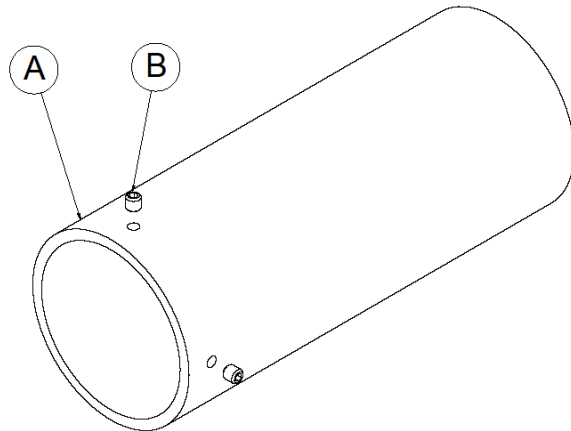
PARTS LIST					
Item	Qty	Description	Item	Qty	Description
A	1	Sleeve Adapter	C	1	1/8" Hex Key
B	2	1/4" Set Screw			

- ◆ Inspect all contents prior to installation. Report any missing parts to dealer immediately.
- ◆ Read all instructions before proceeding.

Option #1: Use the 1/8" Hex Key (C) (not shown) to tighten the 1/4" Set Screws (B) against volleyball post to secure Sleeve Adapter (A) onto volleyball post.

Option #2: Use the 1/8" Hex Key (C) (not shown) to tighten the 1/4" Set Screws (B) against the floor socket wall to create a tight fit between Sleeve Adapter (A) and the floor socket.

VB335  
VB340  
VB354



VB340F

