



With your inspiring rating, COSTWAY will be more consistent to offer you **EASY SHOPPING EXPERIENCE, GOOD PRODUCTS** and **EFFICIENT SERVICE!**

Mit Ihrer inspirierenden Bewertung wird COSTWAY konsistenter sein, um Ihnen **EIN SCHÖNES EINKAUFSERLEBNIS, GUTE PRODUKTE** und **EFFIZIENTEN SERVICE** zu bieten!

Avec votre évaluation inspirante, COSTWAY continuera à fournir une **EXPÉRIENCE D'ACHAT PRATIQUE, des PRODUITS DE QUALITÉ** et un **SERVICE EFFICACE !**

Con su calificación inspiradora, COSTWAY será más consistente para ofrecerle **EXPERIENCIA DE COMPRA FÁCIL, BUENOS PRODUCTOS** y **SERVICIO EFICIENTE.**

Con la tua valutazione incoraggiante, COSTWAY sarà più coerente per offrirti **ESPERIENZA DI ACQUISTO FACILE, BUONI PRODOTTI** e **SERVIZIO EFFICIENTE!**

Dzięki twojej opinii COSTWAY będzie mógł oferować jeszcze **WYGODNIEJSZE ZAKUPY, LEPSZE PRODUKTY** i **SPRAWNIEJSZĄ OBSŁUGĘ KLIENTA.**

US office: Fontana

UK office: Ipswich

DE office: FDS GmbH, Neuer Hölftigbaum 36, 22143 Hamburg, Deutschland

FR office : 26 RUE DU VERTUQUET, 59960 NEUVILLE EN FERRAIN, FRANCE



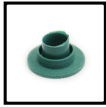
USER'S MANUAL

Christmas Tree
CM23731US CM23732US CM23733US

HARDWARE



SCREW
3PCS



CAP

WARNING: There are plastic caps on the end of each pole that are useless, please make sure remove them before assembling.

If the caps were broken or missing, please don't worry.



1 PERSON
ASSEMBLY

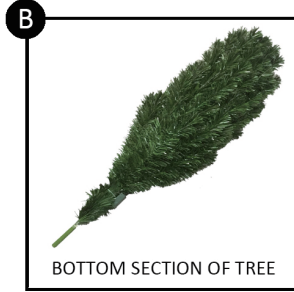


APPROXIMATELY
15 MIN.
ASSEMBLY

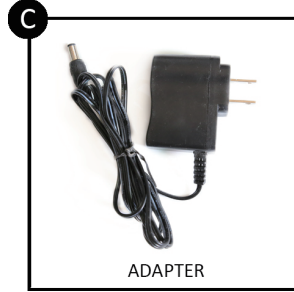
PARTS



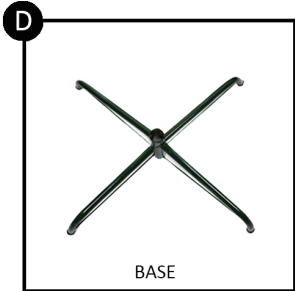
TOP SECTION OF TREE



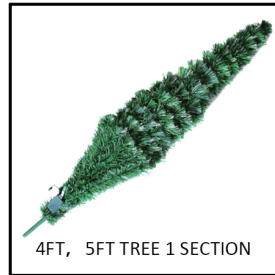
BOTTOM SECTION OF TREE



ADAPTER



BASE



4FT, 5FT TREE 1 SECTION

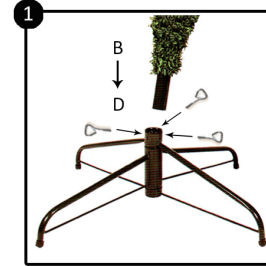
NOTE: 6FT and 7FT trees have 2 sections. We need to connect them together.

4FT and 5FT trees only have 1 section. they can be used directly.

TROUBLE SHOOTING

- If lights/fiber optics are not working, or one section of lights does not work, make sure that all the connections are properly connected.
- If lights/fiber optics continue to not work, take note of which lights/fiber optics are nonfunctional (all lights, one section, or individual lights), and contact our customer service line.
- If all lights do not work, and all connections have been checked, please contact our customer service line and request a replacement function box.

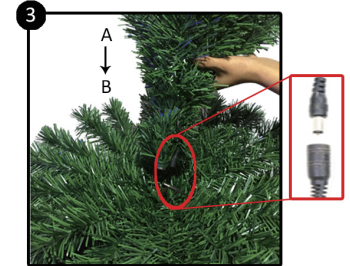
PRODUCT ASSEMBLY



1. Open the base, and place the bottom section of tree on it. Screw the base and the bottom section of the tree with 3 screws.



2. Open the branches carefully. Start at the bottom, and arrange each layer evenly.



3. Connect the top section of the tree in the bottom section. And connect the circular plug and 4-pin electric wires from part A to the corresponding wires on part B.



4. Open the branches of the top section of the tree carefully, and arrange each layer evenly.



5. Open every tip like flower of each branches.



6. After opening all branches, adjust the tree to make it look better. The whole look is shown in the picture.

CAUTION

- Firmly secure all screws before use.
- Product is intended for indoor use only.
- Do not place this tree in a wet location.
- This seasonal product is not intended for permanent installation or use.
- Do not use or store this item in the proximity of open flame, flammable/combustible chemicals, or other strong heat sources.
- If any parts are missing, broken, damaged, or worn, stop using this item until repairs are made and/or factory replacement parts are installed.
- Do not use this item in a way that is inconsistent with the manufacturer's instructions as this could void the product warranty.



7. Finally connect the wires of the tree to the wires of the transformer.

CLEANING & STORAGE

- Store this tree in a cool and dry place away from heat and moisture.
- Before putting this tree in storage, do the following.
 - Completely remove all decorations.
 - Clean the tree with a slightly damp cloth and let it dry naturally.
 - Raise all branches to original upright position; make sure not to damage any branches in the process.