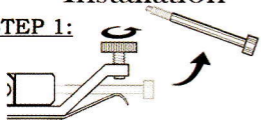


# Hollow Point®

## Installation

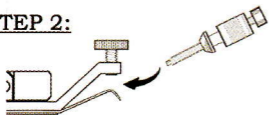
## BLITZ Method®

### STEP 1:



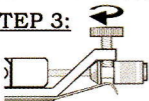
Remove existing string lock screw & rotate fine tuner CCW but do not remove.

### STEP 2:



Insert Hollow Point®/string lock screw assembly.

### STEP 3:



Turn fine tuner CW to lightly contact the Hollow Point and follow the BLITZ Method® for setting intonation.

Kit Includes:

- (6) Hollow Points®
- (6) String Lock Screws
- (1) 3mm Hex Wrench
- (1) 2.5mm Hex Wrench
- (1) 2mm Hex Wrench

### B: BOMB

Bomb the tremolo to relieve string tension and allow easy access to the Hollow Point®.

### L: LOOSEN

While holding the bar down, loosen the saddle mounting screw.

### I: INTONATE

Rotate the Hollow Point® to adjust saddle position.

### T: TIGHTEN

Tighten the saddle mounting screw.

### Z: ZERO-OUT

Center the fine tuner in the groove of the Hollow Point®. Release the bar then re-check tuning.

CHR



The Hollow Point® Intonation System is designed for use with most Floyd Rose® style/licensed and Ibanez® Edge double locking tremolos where the fine tuner makes direct contact with the string lock screw. For more information and instructional videos, visit our website at:

[www.BlackCherryUSA.com](http://www.BlackCherryUSA.com).

Patented .

Made in Korea